

Kurt Preload Eliminator Kit

Part No. HDHM6-PRELOKIT



STEP-BY-STEP SUMMARY

1. Remove movable jaws
2. Place rags over back of nuts
3. Remove socket head cap screw
4. Remove rear pin, spring, and front pin out the rear of the nut
5. Install the eliminator cap into the front pin pocket
6. Install the new spring
7. Install the rear pin over the new spring
8. Rotate the rear pin to align the notched side with the socket head cap screw hole
9. Depress rear pin until the pin notch is aligned with the socket head cap screw hole
10. Install socket head cap screw to retain rear pin
11. Re-install the movable jaws

Step 1, remove the movable jaws to expose the top of the nuts. Step 2, place rags over the back of the nuts to catch the spring-loaded pins when cap screws are removed. Step 3, unscrew the socket head cap screw threaded into the hole on top of the nut (in blue on fig. 1). Step 4, remove the rear spring-loaded pin the rear spring-loaded pin will release into the rags, after the rear pin and spring are removed from the bore, remove the front pin. Step 5, replace the front pin with the shorter cap in your preload eliminator kit.

Begin re-installing the components in the order they were removed. Step 5, install the new eliminator cap into the bore where the front pin used to sit. Step 6, install the new spring. Step 7, install the rear pin over the new spring—make sure the rear pin is rotated with the notched side aligned with the socket head cap screw hole (step 8). Step 9 & 10, push the rear pin in far enough to re-install the socket head cap screw. Step 11, once this screw is in place, put movable jaws back on the vise. There will no longer be a pre-load on the jaws.

TIP: On step 7, use a flat tipped screw driver when depressing the pin. Use it as a lever arm after installing the plunger, the spring and the pin. The spring will need to be depressed using the screw driver. Insert the tip of the screw driver between the jaw guide boss and lever the pin back. This makes it easier to engage the set screw and find set screw retaining notch.

fig. 1

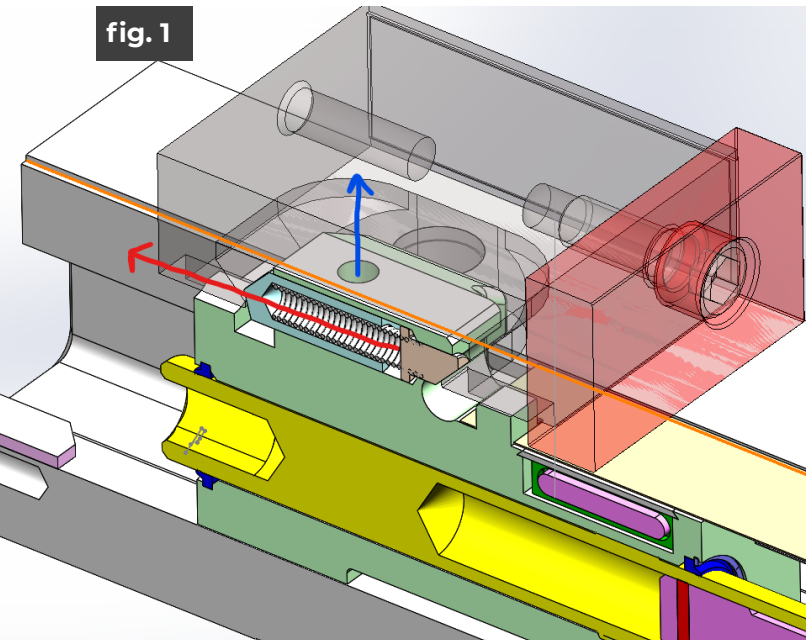
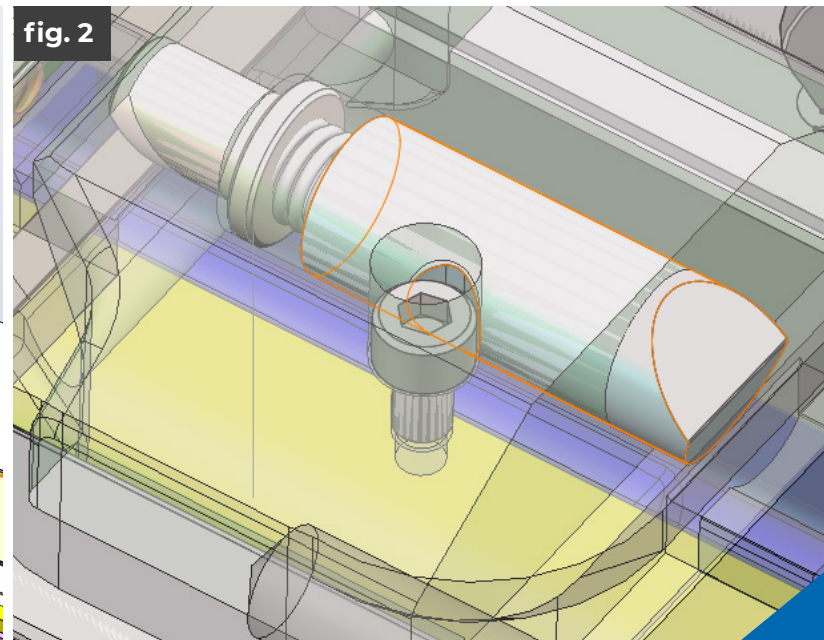


fig. 2



Any questions? Contact Kurt customer service at:
workholding@kurt.com | 1-877-226-7823 | [Contact Us](#)