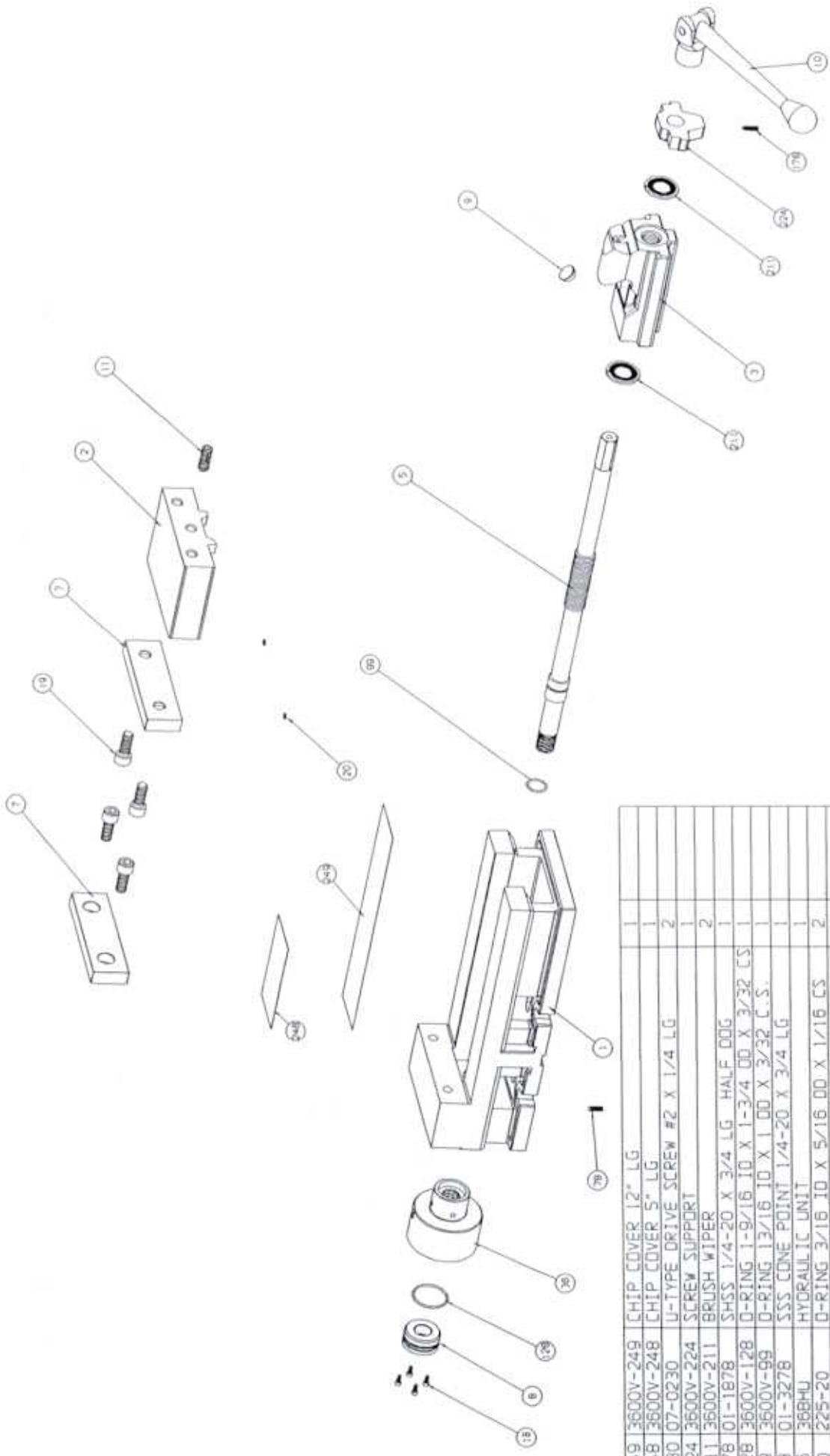
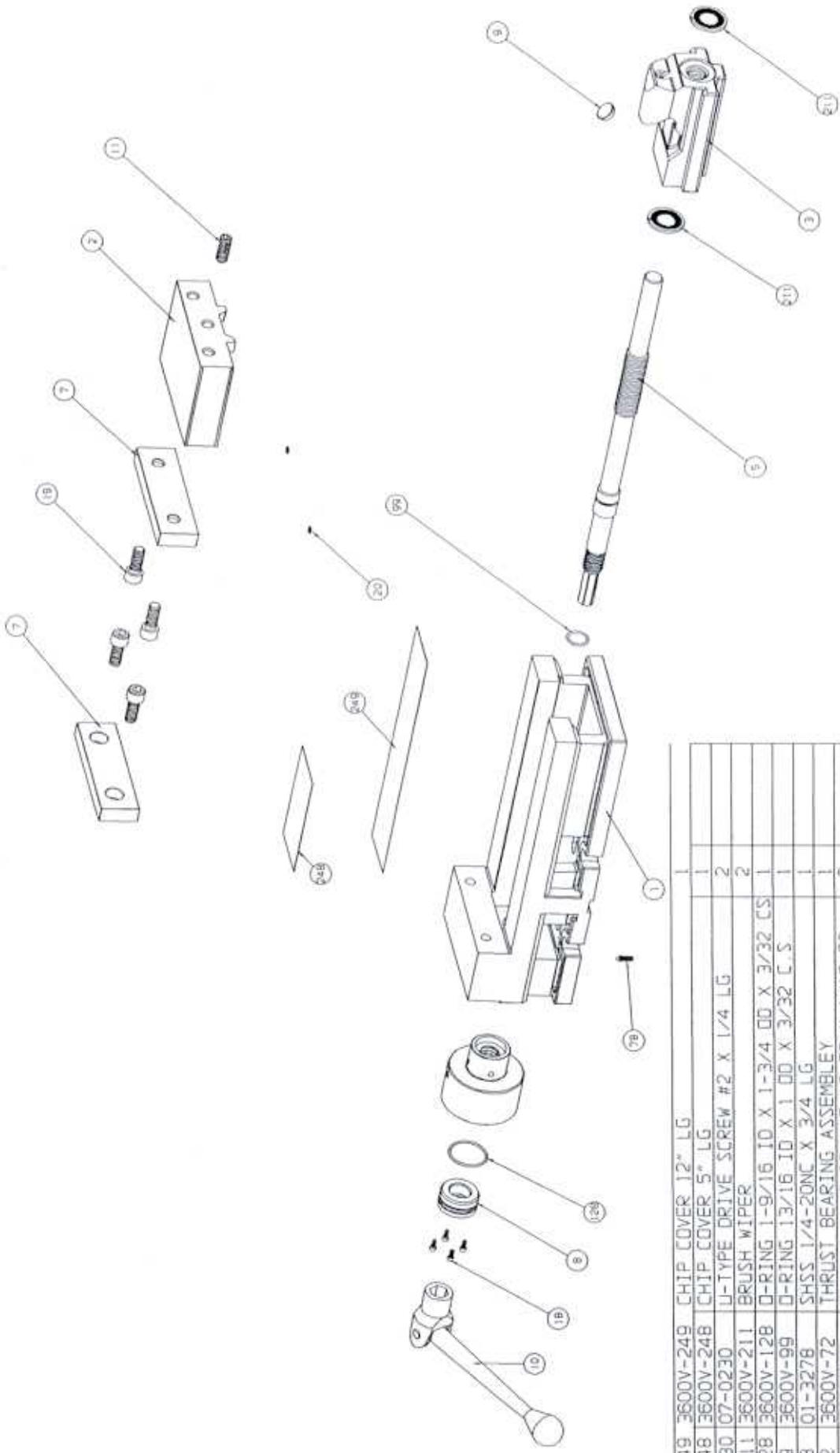


3600H™ REPLACEMENT PART



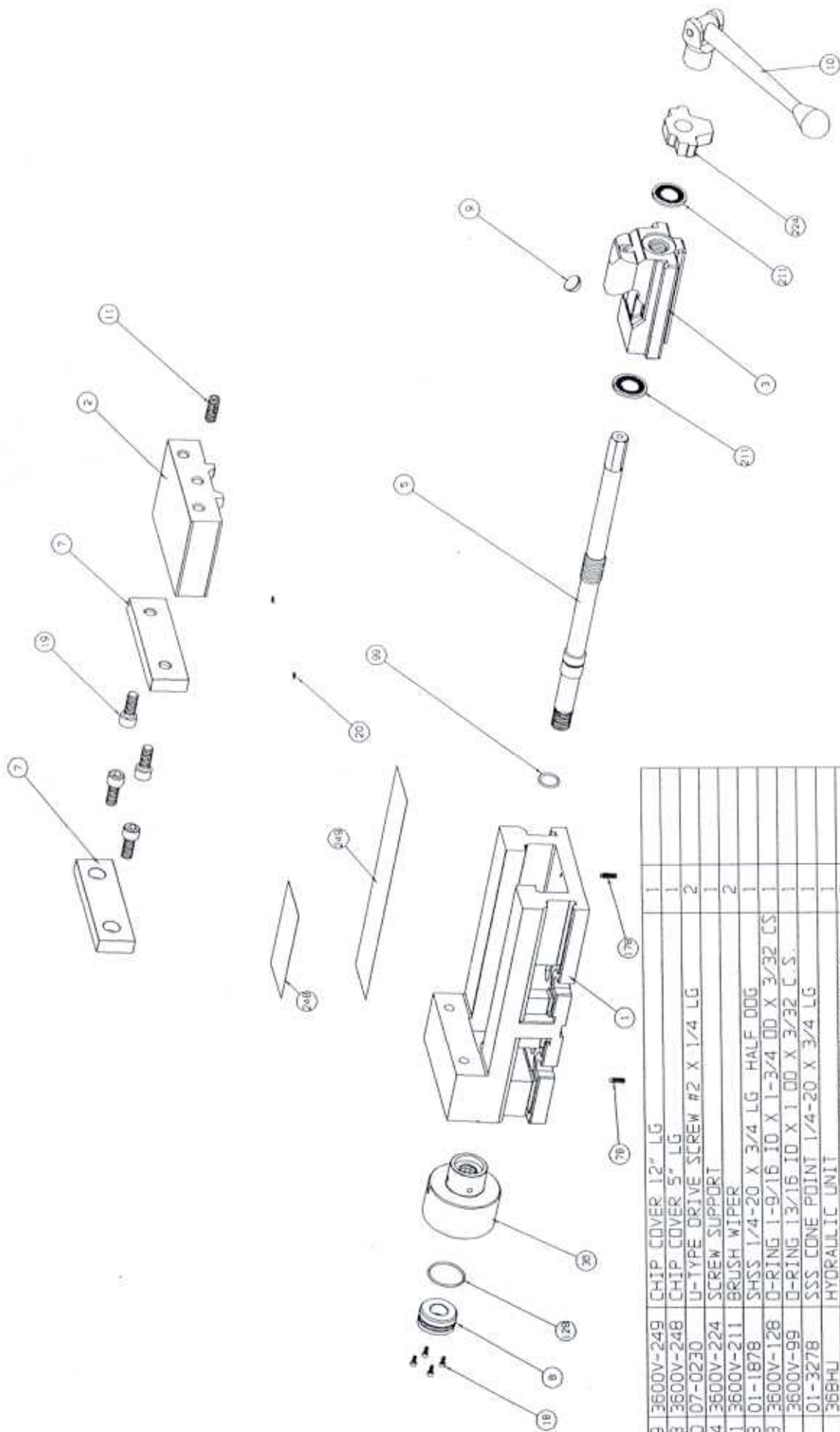
PART NO.	DESCRIPTION	QTY	PRICE
249	3600V-248	1	
248	3600V-248	1	
230	07-0230	2	
224	3600V-224	1	
211	3600V-211	2	
178	01-1878	1	
128	3600V-128	1	
99	3600V-99	1	
78	01-3278	1	
36	368HU	1	
20	225-20	2	
19	00-1419	4	
18	00-1191	4	
11	3600V-11A	1	
10	060-10A-SA	1	
9	060-9	1	
8	3600V-8	1	
7	060-7	2	
5	360HU-5	1	
3	3600V-3	1	
2	3600V-2	1	
1	3600V-1	1	

3610H™ REPLACEMENT PART



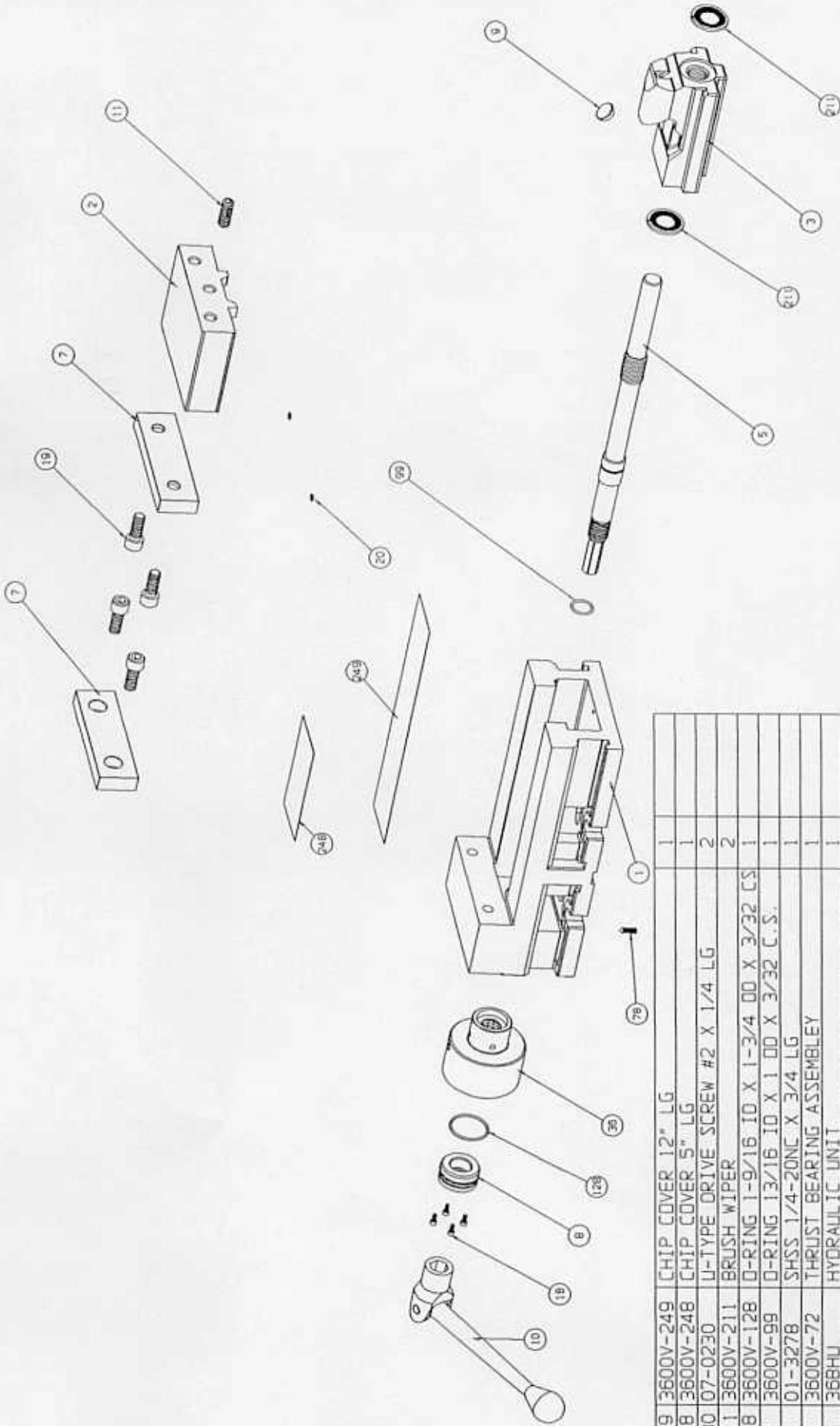
PART NO.	DESCRIPTION	QTY	PRICE
249	3600V-249 CHIP COVER 12" LG	1	
248	3600V-248 CHIP COVER 5" LG	1	
230	07-0230 U-TYPE DRIVE SCREW #2 X 1/4 LG	2	
211	3600V-211 BRUSH WIPER	2	
128	3600V-128 O-RING 1-9/16 ID X 1-3/4 OD X 3/32 CS	1	
99	3600V-99 O-RING 13/16 ID X 1.00 X 3/32 C.S.	1	
78	01-3278 SHSS 1/4-20NC X 3/4 LG	1	
72	3600V-72 THRUST BEARING ASSEMBLY	1	
20	225-20 O-RING 3/16 ID X 5/16 OD X 1/16 CS	2	
19	00-1419 SHCS 1/2 - 13NC X 1-1/4 LG	4	
18	00-1191 SHCS #8-32 UNC X 3/8 LG	4	
11	3600V-11A ADJUSTING SCREW	1	
10	D60-10A-SA HANDLE ASSEMBLY	1	
9	D60-9 SEGMENT	1	
8	3610V-8 RETAINING NUT 2-PIECE	1	
7	D60-7 JAW PLATE	2	
5	3610V-5 SCREW	1	
3	3610V-3 NUT MACHINING	1	
2	3600V-2 MOVABLE JAW	1	
1	3600V-1 BODY MACHINING	1	

3620H™ REPLACEMENT PART



PART NO.	DESCRIPTION	QTY	PRICE
249	3600V-249 CHIP COVER 12" LG	1	
248	3600V-248 CHIP COVER 5" LG	1	
230	07-0230 U-TYPE DRIVE SCREW #2 X 1/4 LG	2	
224	3600V-224 SCREW SUPPORT	1	
211	3600V-211 BRUSH WIPER	2	
178	01-1878 SHSS 1/4-20 X 3/4 LG HALF DOG	1	
128	3600V-128 O-RING 1-9/16 ID X 1-3/4 OD X 3/32 CS	1	
99	3600V-99 O-RING 13/16 ID X 1 OD X 3/32 C.S.	1	
78	01-3278 SSS CONE POINT 1/4-20 X 3/4 LG	1	
36	368HU HYDRAULIC UNIT	1	
20	225-20 O-RING 3/16 ID X 5/16 OD X 1/16 CS	2	
19	00-1419 SHCS 1/2 - 13NC X 1-1/4 LG	4	
18	00-1191 SHCS #8-32 UNC X 3/8 LG	4	
11	3600V-11A ADJUSTING SCREW	1	
10	060-10A-SA HANDLE ASSEMBLY	1	
9	060-9 SEGMENT	1	
8	3600V-8 RETAINING NUT 2-PIECE	1	
7	060-7 JAW PLATE	2	
5	362HU-5 SCREW	1	
3	3600V-3 NUT MACHINING	1	
2	3600V-2 MOVABLE JAW	1	
1	3620V-1 BODY MACHINING	1	

3630H™ REPLACEMENT PART



PART NO.	DESCRIPTION	QTY	PRICE
249 3600V-249	CHIP COVER 12" LG	1	
248 3600V-248	CHIP COVER 5" LG	1	
230 07-0230	U-TYPE DRIVE SCREW #2 X 1/4 LG	2	
211 3600V-211	BRUSH WIPER	2	
128 3600V-128	O-RING 1-9/16 ID X 1-3/4 OD X 3/32 CS	1	
99 3600V-99	O-RING 13/16 ID X 1 OD X 3/32 C.S.	1	
78 01-3278	SHSS 1/4-20NC X 3/4 LG	1	
72 3600V-72	THRUST BEARING ASSEMBLY	1	
36 368HU	HYDRAULIC UNIT	1	
20 225-20	O-RING 3/16 ID X 5/16 OD X 1/16 CS	2	
19 00-1419	SHCS 1/2 - 13NC X 1-1/4 LG	4	
18 00-1191	SHCS #8-32 UNC X 3/8 LG	4	
11 3600V-11A	ADJUSTING SCREW	1	
10 D50-10A-SA	HANDLE ASSEMBLY	1	
9 D60-9	SEGMENT	1	
8 3600V-8	RETAINING NUT 2-PIECE	1	
7 D60-7	JAW PLATE	2	
5 363HU-5	SCREW	1	
3 3610V-3	NUT MACHINING	1	
2 3600V-2	MOVABLE JAW	1	
1 3620V-1	BODY MACHINING	1	

A	V0800	RELEASE	12/16/92	SJD
B	V1164	SEE ECO	03/14/95	

→ X


→ X

1 of 2

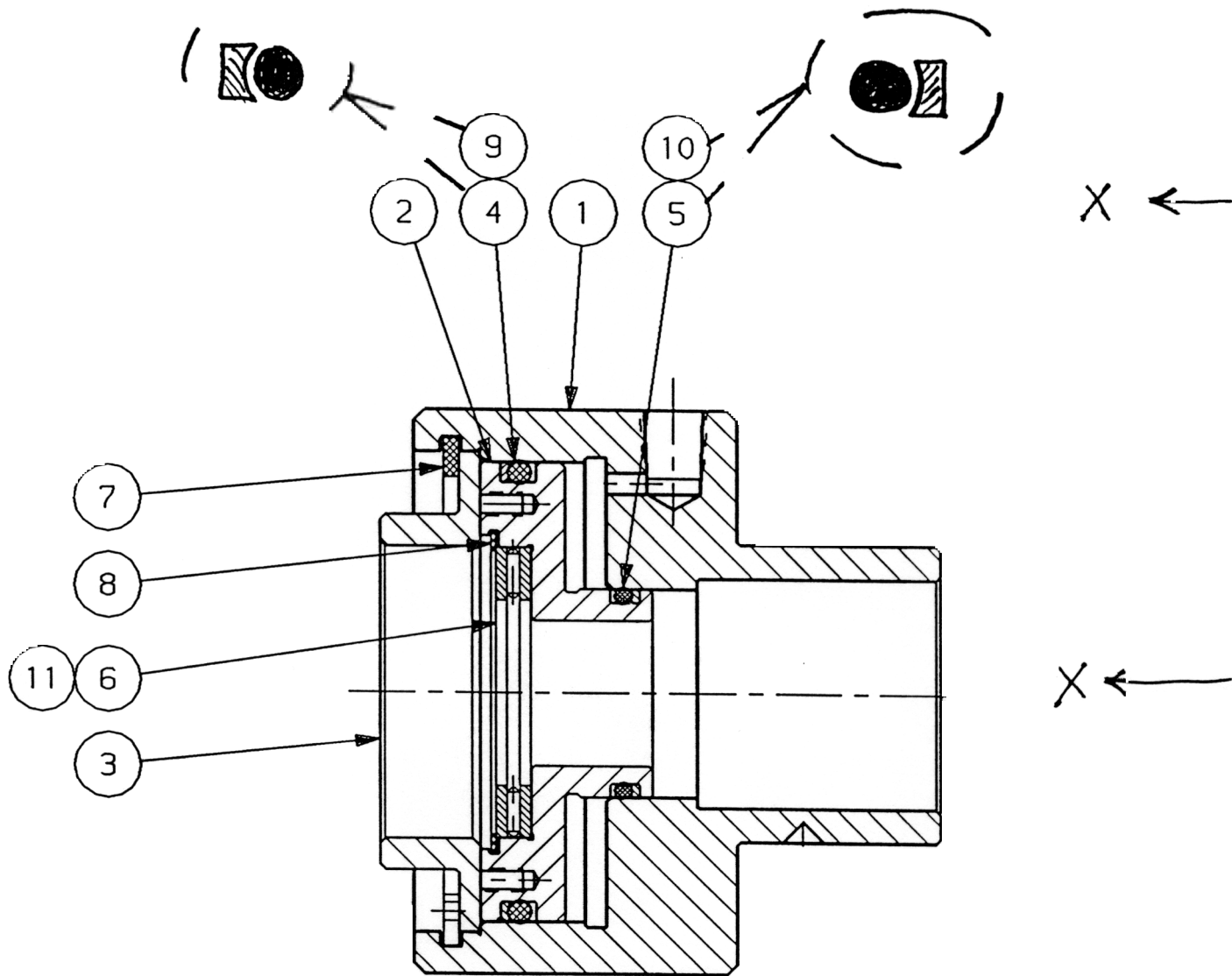
1	3600V-42	N/A	THRUST BEARING WASHER 1.125 I.D. X 1.750 O.D. X .063 THICK TORRINGTON #TRB-1828	2	P
10	360HU-187	N/A	PARKER PARBACK #8-121 1.253 O.D. X 1.081 I.D. X .053 THICK	1	
9	PTH600-188	N/A	PARKER PARBACK #8-230 2.758 O.D. X 2.522 I.D. X .050 THICK	1	P
	360HU-231	N/A	RING, RETAINING, "SMALLEY" LIGHT DUTY #VH-200, 2.079 OD X .118 RAD. WALL X .031 WIDE	1	P
7	360HU-232	N/A	RING, RETAINING, "TRUARC" BASIC INTERNAL #N5000-287, FOR 2-7/8 DIA.	1	
6	D80-41	N/A	THRUST BEARING TORRINGTON #NTA-1828	1	
	360HU-98	N/A	PARKER POLYURETHANE O-RING #2-121 1 1/16 I.D. X 1 1/4 O.D. (3/32 C.S.)	1	P
4	PTH600-96	N/A	PARKER POLYURETHANE O-RING #2-230 2 1/2 I.D. X 2 3/4 O.D. (1/8 C.S.)	1	P
3	360HU-229	A11063	RETAINER	1	
2	360HU-93	B11062	PISTON	1	
1	360HU-90	C11061	CYLINDER HOUSING	1	

ITEM	PART NO.	DWG. NO.	DESCRIPTION	QTY.
------	----------	----------	-------------	------

V. CC>M. 36BHU>U. 36BHU-P

	<b>TOLERANCES UNLESS NOTED INCHES</b> FRACTIONAL ± 1/32 DECIMAL .XX ± .010 .XXX ± .005 .XXXX ± .0005 ANGLES ± 1°		<b>TOOL NAME</b> VERSA LOCK HYDRAULIC UNIT	<b>MODEL OF TOOL</b> DWG SIZE: <b>B</b> KURT DWG. NO.: <b>B18427</b> REVISION LEVEL: <b>B</b>
	<b>TITLE</b> BASIC HYDRAULIC UNIT (PURCHASE)		<b>CUST. PART NO.</b> 36BHU-P <b>TOOL NO.</b> -	
DETAILED CHECKED	DIR < CHEL 12/16/92	<b>SUB-ASSEMBLY</b>		<b>SCALE</b> : <b>SHEET</b> 1 OF





NOTES

	STROKE	25		
2	PISTON AREA	4.7		2 of
3	HYDRAULIC DIAMETER	3.1416	8 in	
4	CLAMPING PRESSURE @	3,200 ps		5,070 THEORETICAL
				2,500 ACTUAL
5	OPERATING HYDRAULIC PRESSURE	200 ps		
				3,200 ps MAX

REV.	ECO	DESCRIPTION	DATE	BY
A	1429	RELEASE	02-88	SP
B	V0698	SEE ECO	04/23/92	SJ
C	V1163	SEE ECO	03/14/95	SJ


THIS IS A BASIC HYDRAULIC UNIT. ALL COMPONENTS WILL BE USED IN THE FOLLOWING ASSEMBLIES:

- 360HU STANDARD HYDRAULIC UNIT
- 361HU REVERSE HYDRAULIC UNIT
- 362HU SHORT HYDRAULIC UNIT
- 363HU REVERSE SHORT HYDRAULIC UNIT

- 3600H STANDARD HYDRAULIC VISE
- 3610H REVERSE HYDRAULIC VISE
- 3620H SHORT HYDRAULIC VISE
- 3630H REVERSE SHORT HYDRAULIC VISE

4.	36BHU-102A	A18391	MODEL/ SERIAL NUMBER STICKER	1	P
3	360HU-87	A11066	SPRING, COMPRESSION	1	P/
2	360HU-230	A11065	WASHER	2	M
1	36BHU-P	B18427	BASIC HYDRAULIC UNIT PURCHASE	1	P
ITEM	PART NO.	DWG. NO.	DESCRIPTION	QTY.	PUR MFC

V. CC > M. 36BHU

	TOLERANCES UNLESS NOTED INCHES FRACTIONAL ± 1/32 DECIMAL .XX ± .010 .XXX ± .005 .XXXX ± .0005 ANGLES ± 1°		TOOL NAME <b>VERSA LOCK HYDRAULIC UNIT</b>	MODEL OF TOOL -	
	TITLE <b>BASIC HYDRAULIC UNIT</b>		DWG SIZE <b>B</b>	KURT DWG. NO. <b>B17863</b>	
DESIGNED -	DETAILED <b>S. KAARTO</b> 08/01/90		REVISION LEVEL <b>C</b>		
CHECKED -	APPROVED -		CUSTOMER <b>36BHU</b>		SCALE <b>1:</b>
DESCRIPTION OR MATERIAL <b>SUB-ASSEMBLY</b>			CUSTOM. PART NO. <b>36BHU</b>		SHEET <b>1</b> OF

