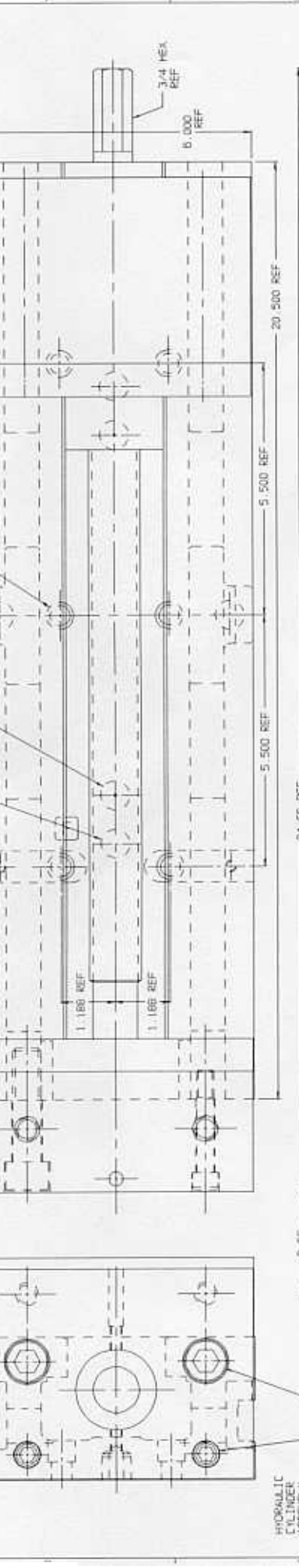
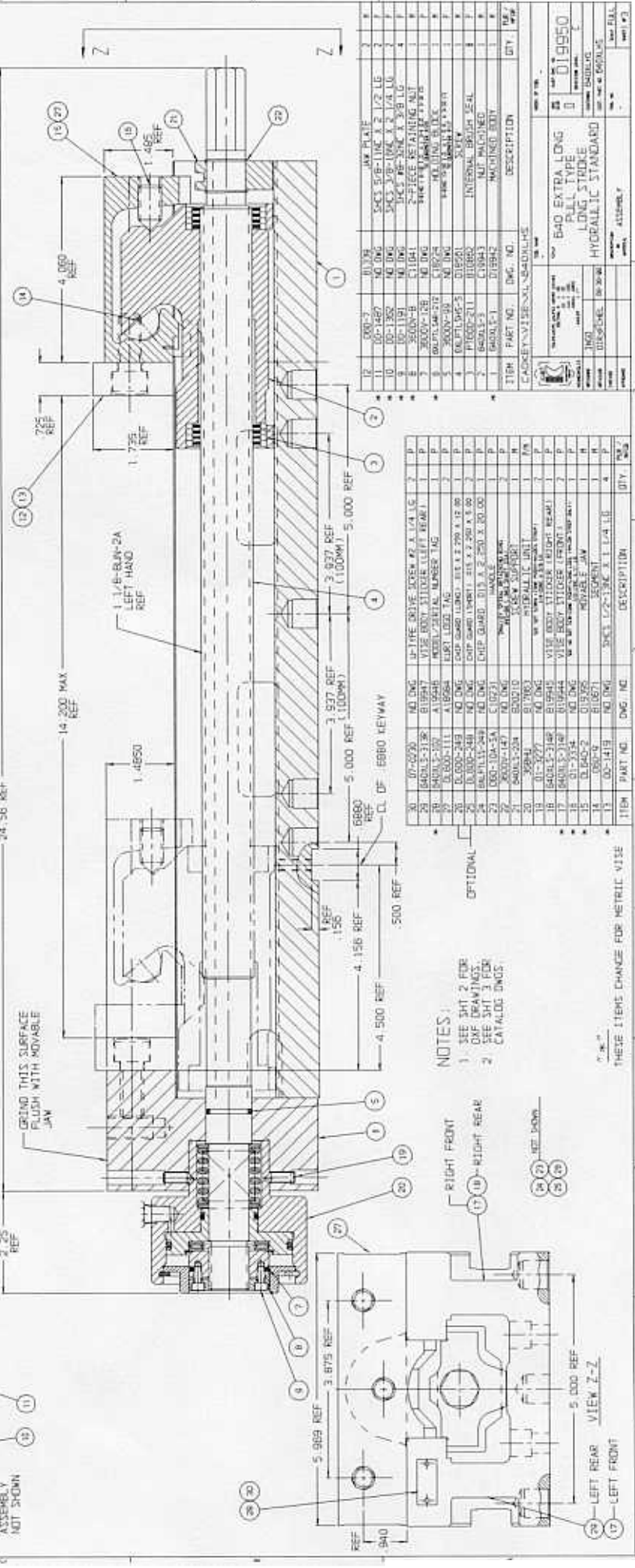


REV	NO	DESCRIPTION	DATE	BY
1	A	ISSUE		
2	B	CHG		
3	C	CHG		



HYDRAULIC
ASSEMBLY
KIT 370N



NOTES:
1 SEE SHIT 2 FOR
ONE DRAUGHTING
SEE SHIT 3 FOR
CATHODE BINS

*.M.
THESE ITEMS CHANGE FOR METRIC VISE

ITEM	PART NO.	DWG. NO.	DESCRIPTION	QTY.
30	07-0230	NO DWG	UP-TYPE DRIVE SCREW #2 X 1/4 LG	2
31	84015-3136	B16947	VISE BODY STIKER (LEFT REAR)	2
32	84015-3137	A16948	MODEL SERIAL NUMBER TAG	2
33	0.000-111	A16949	HARD LOG TAG	2
34	0.000-249	NO DWG	CHIP GUARD (LONG) .815 X 2.250 X 12.00	2
35	0.000-248	NO DWG	CHIP GUARD (SHORT) .815 X 2.250 X 6.00	2
36	84015-249	NO DWG	CHIP GUARD .815 X 2.250 X 10.00	2
37	000-104-3A	C19721	PLATE (VISE BODY)	2
38	8009-147	NO DWG	VISE BODY (VISE BODY)	2
39	84015-208	B20210	STICKER SUPPLIER	1
40	84015-209	B20211	STICKER SUPPLIER	1
41	84015-3148	B16945	VISE BODY STIKER (RIGHT REAR)	2
42	84015-3149	B16946	VISE BODY STIKER (RIGHT FRONT)	2
43	01-333-4	NO DWG	MOVABLE JAW	1
44	01-650-2	B16925	SEGMENT	1
45	00-1419	B16921	SHCS 1/2-13C X 1.1/4 LG	4
46	00-1419	NO DWG	SHCS 1/2-13C X 1.1/4 LG	4

REF
940

REF
940

ITEM	PART NO.	DWG. NO.	DESCRIPTION	QTY.
12	001-3	01029	JAW PLATE	2
13	00-1467	NO DWG	SHCS 5/8-11C X 1/2 LG	2
14	00-1355	NO DWG	SHCS 5/8-11C X 1/2 LG	2
15	84015-2	C11041	2-Piece Retaining Nut	1
16	8000M-228	NO DWG	SHAKING MOUNTING PLATE	1
17	8000M-228	NO DWG	SHAKING MOUNTING PLATE	1
18	8000M-229	C19724	HEX NUT (S.E.C.)	1
19	8000M-230	NO DWG	SHAKING MOUNTING PLATE	1
20	06.FT.145-5	D18591	SLEEVE	1
21	PI002-211	B16962	INTERNAL BRUSH SEAL	1
22	84015-3	C19943	NUT WALCHNER	1
23	84015-1	D16942	MOUNTED BODY	1

ITEM	PART NO.	DWG. NO.	DESCRIPTION	QTY.
24	00-1355	NO DWG	SHCS 5/8-11C X 1/2 LG	2
25	00-1355	NO DWG	SHCS 5/8-11C X 1/2 LG	2
26	00-1355	NO DWG	SHCS 5/8-11C X 1/2 LG	2
27	00-1355	NO DWG	SHCS 5/8-11C X 1/2 LG	2

ITEM	PART NO.	DWG. NO.	DESCRIPTION	QTY.
28	00-1355	NO DWG	SHCS 5/8-11C X 1/2 LG	2
29	00-1355	NO DWG	SHCS 5/8-11C X 1/2 LG	2
30	00-1355	NO DWG	SHCS 5/8-11C X 1/2 LG	2
31	00-1355	NO DWG	SHCS 5/8-11C X 1/2 LG	2

HYDRAULIC ASSEMBLY KIT 370N

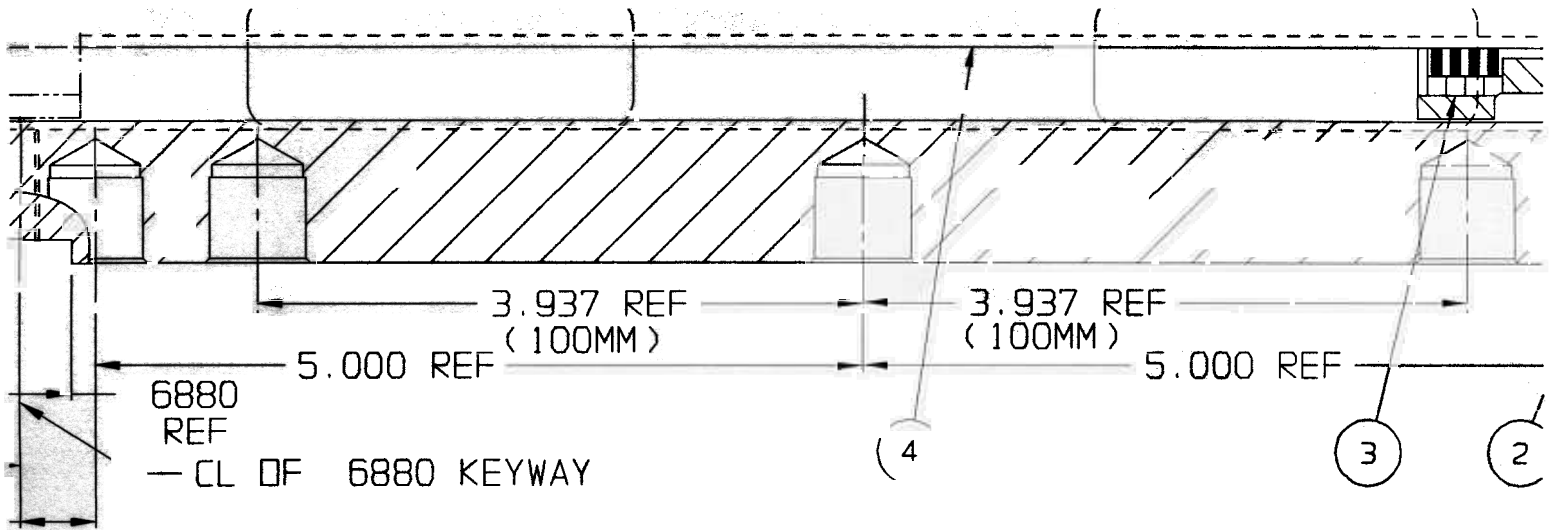
Part No: 019950

Description: B40 EXTRA LONG PULL TYPE LONG STROKE HYDRAULIC STANDARD

ASSEMBLY

670XLHS

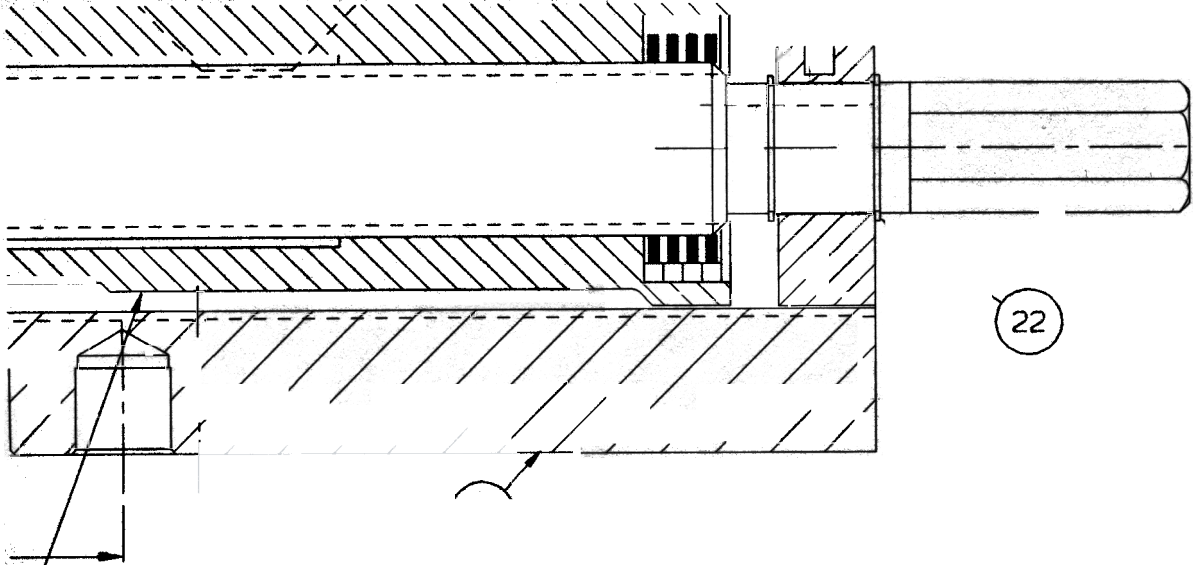
SAGEET



	30	07-0230	NO DWG	U-TYPE DRIVE SCREW #2 X 1/4 LG	2	P
	29	640XLS-313R	B19947	WISE BODY STICKER (LEFT REAR)	1	P
*	28	640XLS-102	A19946	MODEL/SERIAL NUMBER TAG	1	P
	27	DL600-111	A18984	KURT LOGO TAG	2	P
	26	DL600-249	NO DWG	CHIP GUARD (LONG) .015 X 2.250 X 12.00	1	P
	25	DL600-248	NO DWG	CHIP GUARD (SHORT) .015 X 2.250 X 5.00	2	P
	24	6XLPTLSS-249	NO DWG	CHIP GUARD .015 X 2.250 X 20.00	1	P
	23	D60-10A-SA	C10231	HANDLE	1	P
	22	3600V-147	NO DWG	SMALLEY SPIRAL RETAINING RING #WS-B4 (.843 SHAFT DIA)	2	P
	21	640XLS-224	B20210	SCREW SUPPORT	1	M
	20	36BHU	B17863	HYDRAULIC UNIT	1	P/M
	19	01-3277	NO DWG	SOC SET SCREW (CONE POINT-NYLOCK STRIP) 1/4-20NC X 5/8 LG	2	P
	18	640XLS-314R	B19945	WISE BODY STICKER (RIGHT REAR)	1	P
*	17	640XLS-314F	B19944	WISE BODY STICKER (FRONT)	2	P
*	16	01-3334	NO DWG	SOC HD SET SCR-CONE POINT-LONG LOCK (NYLON STRIP ONLY) 1/2-13NC X 1" LG	1	P
*	15	DL640-2	D19395	MOVABLE JAW	1	M
	14	D60-9	B10671	SEGMENT	1	M
*	13	00-1419	NO DWG	SHCS 1/2-13NC X 1 1/4 LG	4	P
	ITEM	PART NO	DWG. NO.	DESCRIPTION	QTY.	PUR / MFR


640XLHS

SHEET 2 OF 3



12	D60-7	B1339	JAW PLATE	2	M
* 11	00-1487	NO DWG	SHCS 5/8-11NC X 2 1/2 LG	2	P
* 10	00-1362	NO DWG	SHCS 3/8-16NC X 2 1/4 LG	2	P
* 9	00-1191	NO DWG	SHCS #8-32NC X 3/8 LG	4	P
* 8	3600V-8	C11041	2-PIECE RETAINING NUT	1	M
7	3600V-128	NO DWG	O-RING 1 9/16 I.D. X 1 3/4 O.D. X 3/32 CS 70 DUROMETER #129	1	P
* 6	6XLPTLSAR-212	C18224	HOLDING BLOCK	1	M
5	3600V-99	NO DWG	O-RING 1 3/8 I.D. X 1 7/8 O.D. X 3/32 CS 70 DUROMETER #117	1	P
4	6XLPTLSHS-5	D18561	SCREW	1	M
3	PT600-211	B10862	INTERNAL BRUSH SEAL	8	P
2	640XLS-3	C19943	NUT MACHINED	1	M
* 1	640XLS-1	D19942	MACHINED BODY	1	M
ITEM	PART NO.	DWG. NO.	DESCRIPTION	QTY.	PLR / MFGR

CADKEY \ VISE \ XL \ 640XLHS

 MINNEAPOLIS	TOLERANCES UNLESS NOTED INCHES DECIMAL .X ± .05 .XX ± .02 .XXX ± .005 .XXXX ± .0005 ANGLES ± 1°		TOOL NAME -	MODEL OF TOOL -	
	TITLE 640 EXTRA LONG PULL TYPE LONG STROKE HYDRAULIC STANDARD			DWG SIZE 0	KURT DWG. NO. D19950 REVISION LEVEL: C
DESIGNED	INGO		CUSTOMER 640XLHS		
DETAILED	DIRSCHEL	09-30-99	CLST. PART NO. 640XLHS		
CHECKED			TOOL NO.		SCALE FULL
APPROVED					SHEET 1 OF 3

640XLHS

SHEET 3 OF 3