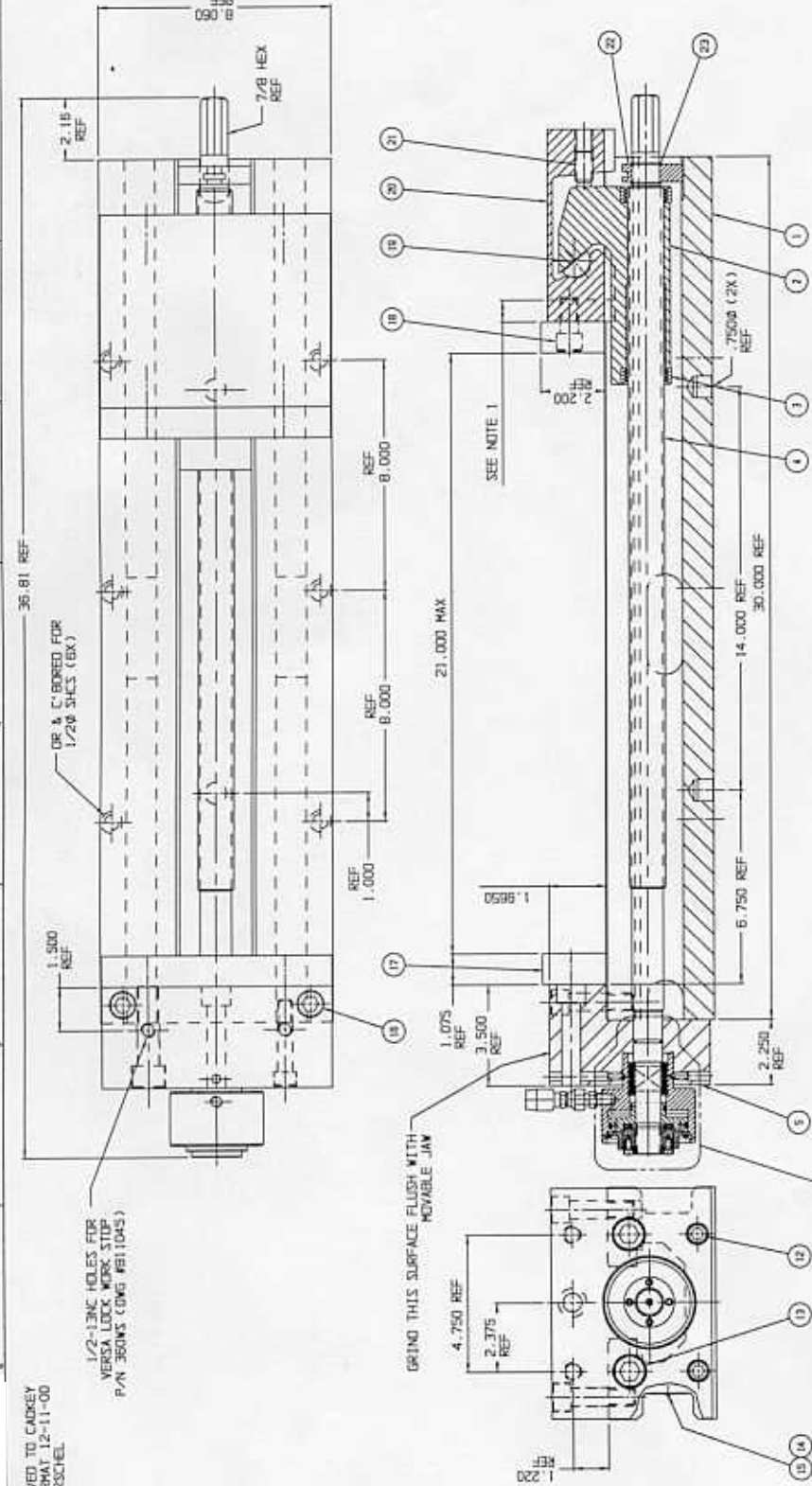


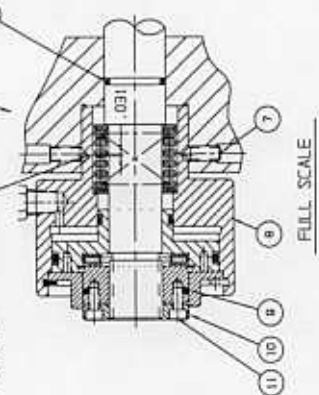
MOVED TO CADKEY  
FORMAT 12-11-00  
DJKSCHEL

1/2-13NC HOLES FOR  
VERSALOCK WORK STOP  
P/N 3630MS (DWG RB11045)



- NOTES:  
 1. IF REQUIRED, CAN REMOVE .750 STOCK FROM FRONT EDGE ON MOVABLE JAW AND STILL CLOSE VISE TO ZERO OPENING. WOULD BECOME 21.750.  
 2. SEE SHEET 2 FOR DXF DRAWINGS.  
 3. SEE SHEET 3 FOR CATALOG DRAWINGS.

ADDITIONAL .250 X 90°  
GRILL POINT REF 0.1 IN  
HYDRAULIC CYLINDER  
AT ASSEMBLY



FULL SCALE

ITEM	PART NO.	DWG. NO.	DESCRIPTION	QTY.	MR. #
20	BOLPLTS-245	NO DWG	DXF GUARD .015 X 2.750 X 24.00	1	P
21	BOLPLTS-147	C10231	HANDLE ASSEMBLY	1	P
22	BOLPLTS-204	NO DWG	WIPER BAR SUB-ASSY	2	P
23	01-295-3	NO DWG	SKIRT SUPPORT	1	K
24	BRO-2	NO DWG	NOVABLE JAW	1	P
19	BRO-9	B10071	NOVABLE JAW	1	K
18	00-1481	NO DWG	SKIRT X 2.750 X 11.1/4 LG	4	P
17	BRO-7	B1395	JAW PLATE	2	K

ITEM	PART NO.	DWG. NO.	DESCRIPTION	QTY.	MR. #
16	00-1480	NO DWG	SKRT 5.00-11NC X 2.1/4 LG	2	P
15	07-0230	NO DWG	U-TYPE DRIVE SCREW #2 X 3/4 LG	2	P
14	BOLPLTS-102	A19453	SKRT 5.00-11NC X 2.3/4 LG	1	P
13	00-1519	NO DWG	SKRT 3/4-13NC X 2.3/4 LG	2	P
12	00-1425	NO DWG	SKRT 1/2-13NC X 2.1/2 LG	2	P
11	00-1191	NO DWG	SKRT 3/8-13NC X 3/8 LG	4	P
10	3600V-1	NO DWG	SKRT 1/4-13NC X 3/4 LG	1	P
9	3600V-128	NO DWG	SKRT 1/4-13NC X 3/4 LG	1	P
8	01-2975	NO DWG	HYDRAULIC PLATE	1	P
7	3600V-58	NO DWG	WIPER BAR SUB-ASSY	2	P
6	3600V-59	NO DWG	WIPER BAR SUB-ASSY	1	P
5	BOLPLTS-212	D18452	HOLDING BLOCK	1	K
4	BOLPLTS-5	D18644	SLEW	1	K
3	PTROD-211	B10889	INTERNAL BRUSH SEAL	8	P
2	BOLPLTS-3	C18450	NUT	1	K
1	BOLPLTS-1	D18449	MACHINED BODY	1	K

CADKEY V15.5S-MC-NOXL-PTL-315


REV	DATE	DESCRIPTION
1	08/08/00	ISSUED
2	08/08/00	REV A2
3	08/08/00	REV A3
4	08/08/00	REV A4

DATE	BY	CHKD	APP'D
08/08/00	DJK	DLK	DLK
08/08/00	DJK	DLK	DLK
08/08/00	DJK	DLK	DLK

ITEM	PART NO.	DWG. NO.	DESCRIPTION	QTY.	MR. #
1	B	018943	EXTRA LONG PULL TYPE LONG STROKE HYD STANDARD		
2	B	018943	EXTRA LONG PULL TYPE LONG STROKE HYD STANDARD		
3	B	018943	EXTRA LONG PULL TYPE LONG STROKE HYD STANDARD		

25	8XLPTLSS-249	NO DWG	CHIP GUARD .015 X 2.750 X 24.00	1	P
24	D80-10A-SA	C10231	HANDLE ASSEMBLY	1	P
23	8XLPTLSS-147	NO DWG	SMALLEY SPIRAL RETAINING RING #WS-96 (.968 SHAFT DIA)	2	P
22	8XLPTLSS-224A	B20211	SCREW SUPPORT	1	M
21	01-3953	NO DWG	SDC HD SET SCR-HALF DOG-LONG LOCK (NYLON STRIP ONLY) 5/8-11NC X 1 1/4 LG	1	P
20	D80-2	D1362	MOVABLE JAW	1	M
19	D80-9	B10671	SEGMENT	1	M
18	00-1481	NO DWG	SHCS 5/8-11NC X 1 1/4 LG	4	P
17	D80-7	B1366	JAW PLATE	2	M
16	00-1486	NO DWG	SHCS 5/8-11NC X 2 1/4 LG	2	P
15	07-0230	NO DWG	U-TYPE DRIVE SCREW #2 X 1/4 LG	2	P
14	8XLPTLSS-102	A18453	MODEL/SERIAL NUMBER TAG .031 X 1 3/8 X 2 5/8	1	P
13	00-1519	NO DWG	SHCS 3/4-10NC X 2 3/4 LG	2	P
12	00-1425	NO DWG	SHCS 1/2-13NC X 2 1/2 LG	2	P
11	00-1191	NO DWG	SHCS #8-32NC X 3/8 LG	4	P
10	3600V-8	C11041	2-PIECE RETAINING NUT	1	M
9	3600V-128	NO DWG	O-RING 1 9/16 I.D. X 1 3/4 O.D. X 3/32 CS 70 DUROMETER #129	1	P
8	368HU	B17863	HYDRAULIC UNIT	1	M
7	01-3275	NO DWG	SDC SET SCREW, CONE POINT, NYLOCK 1/4-20NC X 3/8 LG	2	P
6	3600V-99	NO DWG	O-RING 13/16 I.D. X 1" O.D. X 3/32 CS 70 DUROMETER #117	1	P
5	8XLPTLSS-212	D18452	HOLDING BLOCK	1	M
4	8XLPTLSHS-5	D18544	SCREW	1	M
3	PT800-211	B10889	INTERNAL BRUSH SEAL	8	P
2	8XLPTLSS-3	C18450	NUT	1	M
1	8XLPTLSS-1	D18449	MACHINED BODY	1	M
ITEM	PART NO.	DWG. NO.	DESCRIPTION	QTY.	PLR / MFGR

CADKEY\WISE\XL\8XLPTLSHS

 <p>MINNEAPOLIS</p>	<p>TOLERANCES UNLESS NOTED INCHES</p> <p>DECIMAL .X ± .05</p> <p>.XX ± .02</p> <p>.XXX ± .005</p> <p>.XXXX ± .0005</p> <p>ANGLES ± 1°</p>		<p>TOOL NAME -</p> <p>TITLE 8" EXTRA LONG PULL TYPE LONG STROKE HYD STANDARD</p>	<p>MODEL OF TOOL -</p> <p>DWG SIZE 0</p> <p>KURT DWG. NO. D18543</p> <p>REVISION LEVEL: C</p>
	DESIGNED	BERNSTEIN	<p>DESCRIPTION OR MATERIAL ASSEMBLY</p>	CUSTOMER 8XLPTLSHS
	DETAILED	DIRSHEL 10-06-93		CUST. PART NO. 8XLPTLSHS
	CHECKED			TOOL NO. -
	APPROVED			SCALE 1/2
				SHEET 1 OF 3

2

8XLPTLSHS

SHEET 2 OF 2