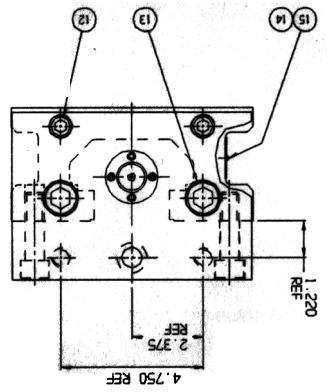
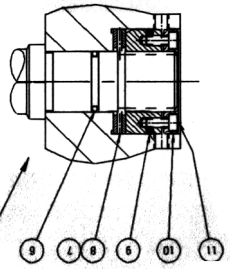


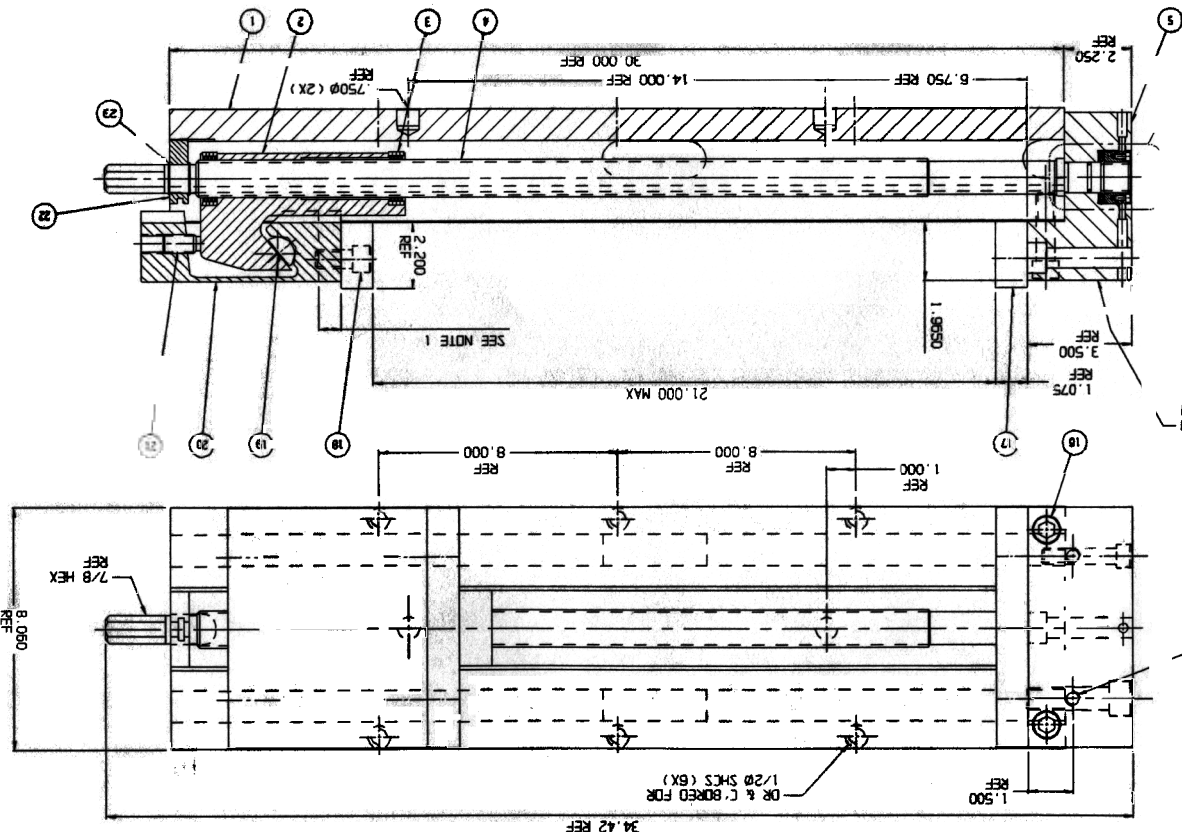
1/2-13NC HOLES FOR
 VERSA LOCK 6" WORK STOP
 P/N 3600S (DWG #B11045)

GRIND THIS SURFACE FLUSH WITH
 MOVABLE JAW

FULL SCALE



- NOTES:
1. IF REQUIRED, CAN REMOVE .750 STOCK FROM FRONT EDGE ON MOVABLE JAW AND STILL CLOSE WISE TO ZERO OPENING WOULD BECOME 21.750
 2. SEE SHEET 2 FOR DXF DRAWINGS
 3. SEE SHEET 3 FOR CATALOG DRAWINGS.

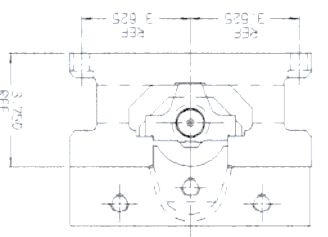


ITEM	PART NO.	DWG. NO.	DESCRIPTION	QTY.	UNIT
25	BLP1155-249	NO DWG	CHIP GUARD, .015 X 2.750 X 24.00	1	P
24	DB0-10A-SA	C10231	HANDLE ASSEMBLY	1	P
23	BLP1155-147	NO DWG	SCREW SUPPORT	2	P
22	BLP1155-224A	B20211	SCREW SUPPORT	1	M
21	01-3953	NO DWG	MOVABLE JAW	1	P
20	DB0-2	01262	MOVABLE JAW	1	P
19	DB0-9	010871	SEGMENT	1	M
18	00-1481	NO DWG	SHCS 5/8-11NC X 1 1/4 LG	4	P
17	DB0-7	B1366	JAW PLATE	2	M

8XLPTSSS

SHEET

ITEM	PART NO.	DWG. NO.	DESCRIPTION	QTY.	UNIT
16	00-1486	NO DWG	SHCS 5/8-11NC X 2 1/4 LG	2	P
15	07-0230	NO DWG	U-TYPE DRIVE SCREW #2 X 1 1/4 LG	2	P
14	BLP1155-102	A18453	U-TYPE DRIVE SCREW #2 X 1 1/4 LG	1	P
13	00-1519	NO DWG	SHCS 3/4-10NC X 2 3/4 LG	2	P
12	00-1425	NO DWG	SHCS 1/2-13NC X 2 1/2 LG	2	P
11	00-1191	NO DWG	SHCS RB-32NC X 3/8 LG	4	P
10	3610V-B	C11072	2-PIECE RETAINING NUT	1	M
9	3600V-128	NO DWG	2-PIECE RETAINING NUT	1	M
8	DB0-41	NO DWG	SCREW SUPPORT	1	P
7	3600V-99	NO DWG	SCREW SUPPORT	2	P
6	3600V-99	NO DWG	SCREW SUPPORT	1	P
5	BLP1155-212	018452	HOLDING BLOCK	1	M
4	BLP1155-5	018451	SCREEN	1	M
3	PT800-211	B10889	INTERNAL BRUSH SEAL	8	P
2	BLP1155-3	C18450	NUT	2	P
1	BLP1155-1	D18449	MACHINED BODY	1	P




26 NOT SHOWN

DATE	BY	DESCRIPTION
08/15/80		
08/15/80		
08/15/80		

16	00-1486	NO DWG	SHCS 5/8- NC X 2 1/4 LG	2	P
15	07-0230	NO DWG	U-TYPE DRIVE SCREW #2 X 1/4 LG	2	P
14	8XLPTLSS-102	A18453	MODEL/SERIAL NUMBER TAG 031 X 1 3/8 X 2 5/8	1	P
13	00-1519	NO DWG	SHCS 3/4-10NC X 2 3/4 LG	2	P
12	00-1425	NO DWG	SHCS 1/2-13NC X 2 1/2 LG	2	P
11	00-1191	NO DWG	SHCS #8-32NC X 3/8 LG	4	P
10	3610V-8	C11072	2-PIECE RETAINING NUT	1	M
9	3600V-128	NO DWG	O-RING 1 9/16 I.D. X 1 3/4 O.D. X 3/32 CS 70 DUROMETER #129	1	P
8	D80-41	NO DWG	TORRINGTON BEARING #NTA-1828	1	P
7	3600V-42	NO DWG	TORRINGTON WASHER #TRB-1828 1.125 I.D. X 1/750 O.D. X .063 THICK	2	P
6	3600V-99	NO DWG	O-RING 1 3/16 I.D. X 1" O.D. X 3/32 CS 70 DUROMETER #117	1	P
5	8XLPTLSS-212	D18452	HOLDING BLOCK	1	M
4	8XLPTLSS-5	D18451	SCREW	1	M
3	PT800-211	B10889	INTERNAL BRUSH SEAL	8	P
2	8XLPTLSS-3	C18450	NUT	1	M
1	8XLPTLSS-1	D18449	MACHINED BODY	1	M
ITEM	PART NO.	DWG. NO.	DESCRIPTION	QTY.	PLR / MFR

CADKEY\WISE\XL\8XLPTLSS

 <p>MINNEAPOLIS</p>	<p>TOLERANCES UNLESS NOTED INCHES</p> <p>DECIMAL X ± .05</p> <p>.XX ± .02</p> <p>.XXX ± .005</p> <p>.XXXX ± .0005</p> <p>ANGLES ± 1°</p>		<p>TOOL NAME -</p>	<p>MODEL OF TOOL -</p>	
	<p>DESIGNED BERNSTEIN</p>		<p>TITLE 8" EXTRA LONG PULL TYPE LONG STROKE STANDARD</p>	<p>DWG SIZE D</p>	<p>KURT DWG. NO. D18448</p>
	<p>DETAILED DIRSCHL 04/02/93</p>			<p>REVISION LEVEL: B</p>	
	<p>CHECKED</p>			<p>CUSTOMER 8XLPTLSS</p>	
	<p>APPROVED</p>			<p>CUST. PART NO. 8XLPTLSS</p>	
		<p>DESCRIPTION OR MATERIAL ASSEMBLY</p>	<p>TOOL NO. -</p>	<p>SCALE 1/2</p>	

2

8XLPTLSS

SHEET 2 OF 3

25	8XLPTLSS-249	NO DWG	CHIP GUARD .015 X 2.750 X 24.00	1	P
24	D80-10A-SA	C10231	HANDLE ASSEMBLY	1	P
23	8XLPTLSS-147	NO DWG	SMALLEY SPIRAL RETAINING RING #WS-96 (.968 SHAFT DIA)	2	P
22	8XLPTLSS-224A	B20211	SCREW SUPPORT	1	M
21	01-3953	NO DWG	SOC HD SET SCR-HALF DDG-LONG LOCK (NYLON STRIP ONLY) 5/8-11NC X 1 1/4 LG	1	P
20	D80-2	D1362	MOVABLE JAW	1	M
19	D80-9	B10671	SEGMENT	1	M
18	00-1481	NO DWG	SHCS 5/8-11NC X 1 1/4 LG	4	P
17	D80-7	B1366	JAW PLATE	2	M
ITEM	PART NO.	DWG NO	DESCRIPTION	QTY.	PLR / MFR

8XLPTLSS

SHEET 3 OF 3