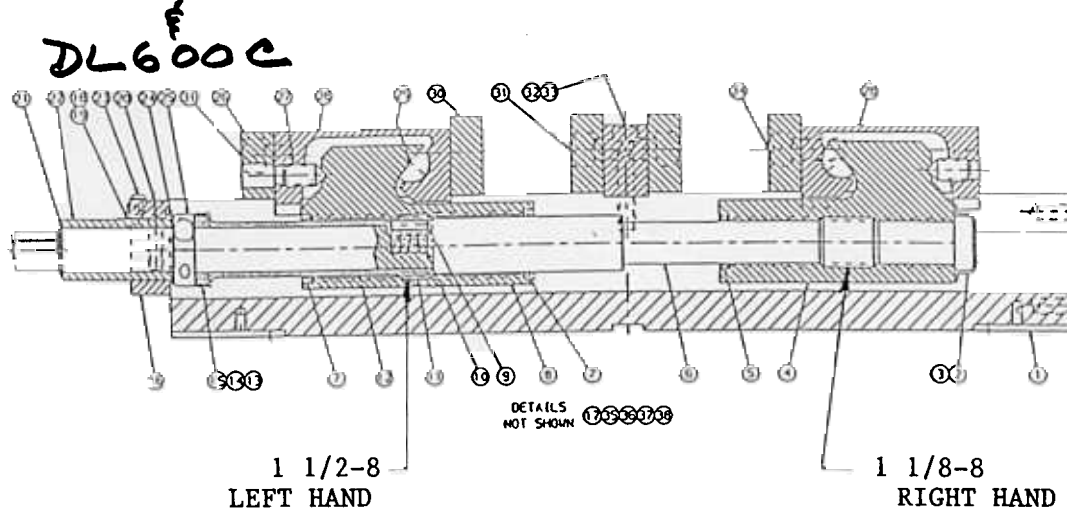


New Split Collar Screw  
 DL600-5B-KIT 95.00  
 DL600-5 Screw  
 DL600-122 Split Collar  
 DL600-209A Sleeve

Nut & Screw Assembly  
 DL600-3A-SA 450.00



# DL600A™ REPLACEMENT PARTS



ITEM	QTY	DESCRIPTION	PART NUMBER
1	1	BODY	DL600-1C
2	1	END CAP	DL600-218
3	4	U-TYP.DRIVE SCREW #2 X 1/4	07-0230
4	1	REAR UNIT	DL600-3R-C
5	1	U-CUP SEAL	DL600-146
6	1	SCREW	DL600-5 C
7	2	U-CUP SEAL	DL600-180
8	1	FRONT NUT	DL600-3FA
9	1	DOWEL PIN 3/16 DIA. X 7/8 LG.	04-0031
10	4	CLUTCH SPRINGS	DL600-215A
11	1	* CLUTCH	DL600-273
12	1	* CLUTCH SPACER	DL600-274A
13	2	THRUST WASHER	D60-42
14	1	THRUST BEARING	D60-41
15	1	THRUST WASHER COLLAR	DL600-272A
16	1	HOLDING BLOCK	DL600-212C
17	1	SERIAL NUMBER TAG	DL600A-102A
18	2	COMPRESSION SPRING	DL600-197
19	2	SHLD. SCREW 1/2 DIA. X 5/8 LG.	DL600-176A
20	1	SHCS. 5/16 - 18 X 1 1/4 LG.	00-1326
21	1	RETAINING RING (EXTERNAL)	DL600-217A
22	1	* SLEEVE	DL600-209A
23	2	BHCS #10 - 24NC X 3/8 LG.	03-0124
24	1	THRUST WASHER (.030 THICK)	TRA-1625
25	1	DOUBLE SPLIT COLLAR	DL600-8
26	1	RETAINING PLATE	DL600-227
27	2	SHSS CONE PT. 1/2 - 13 X 1 LG.	01-3334
28	2	MOVEABLE JAW <b>DL640-2 DL600-2</b>	
29	2	SEGMENT	D60-9
30	4	JAW PLATE	D60-7
31	6	SHCS 1/2 - 13 X 5/8 LG.	00-1412
32	2	SHCS 3/8 - 16 X 2 LG.	00-1361
33	1	STATIONARY JAW	DL600-6-C
34	4	SHCS 1/2 - 13 X 1 1/4 LG.	00-1419
35	1	I-HANDLE WRENCH ( 1/4 HEX)	DL600-219
36	1	HANDLE ASSEMBLY	D60-10A-SA
37	2	CHIP GUARD (SHORT)	DL600-248A
38	1	CHIP GUARD (LONG)	DL600-249A
39	2	BUSHING	DL600-213B

\* For MFG Purposes/Set Number is DL600-349-JIT