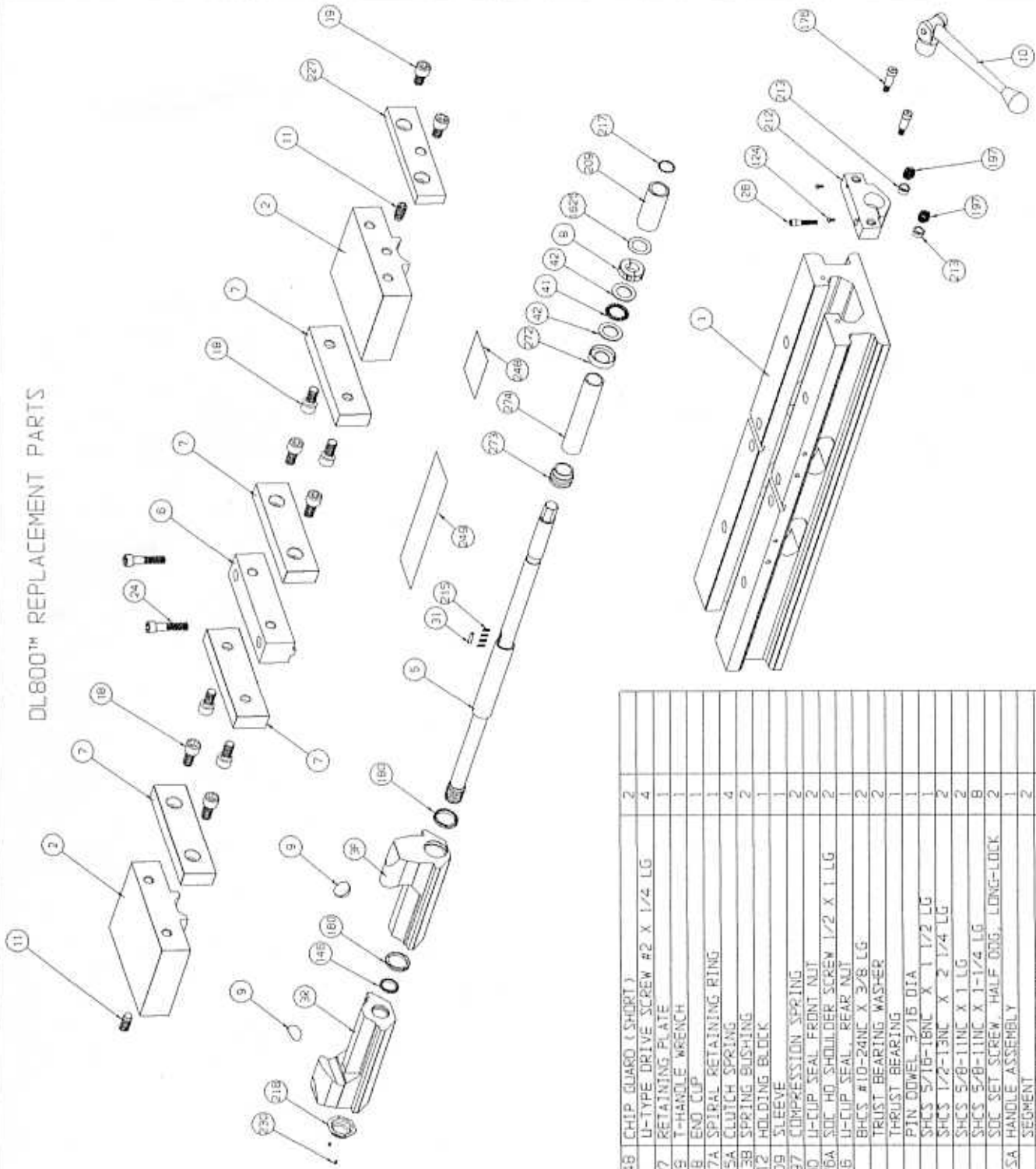


DL800™ REPLACEMENT PARTS



PART NO.	DESCRIPTION	QTY	PRICE
248 DL80XL-248	CHIP GUARD (SHORT)	2	
230 107-0230	U-TYPE DRIVE SCREW #2 X 1/4 LG	4	
227 DL800-227	RETAINING PLATE	1	
219 DL800-219	T-HANDLE WRENCH	1	
218 DL800-218	END CUP	1	
217 DL800-217A	SPIRAL RETAINING RING	1	
215 DL800-215A	CLUTCH SPRING	4	
213 DL800-213B	SPRING BUSHING	2	
212 DL800-212	HOLDING BLOCK	1	
209 DL800-209	SLEEVE	1	
197 DL800-197	COMPRESSION SPRING	2	
180 DL800-180	U-CUP SEAL FRONT NUT	2	
176 DL800-176A	SOC HD SHOULDER SCREW 1/2 X 1 LG	2	
146 DL800-146	U-CUP SEAL, REAR NUT	1	
124 103-0124	BHCS #10-24NC X 3/8 LG	2	
42 D60-42	THRUST BEARING WASHER	2	
41 D60-41	THRUST BEARING	1	
31 04-0031	PIN DOWEL 3/16 DIA	1	
28 00-1328	SHCS 5/16-18NC X 1 1/2 LG	1	
24 00-1424	SHCS 1/2-13NC X 2 1/4 LG	2	
19 00-1479	SHCS 5/8-11NC X 1 LG	2	
18 00-1481	SHCS 5/8-11NC X 1-1/4 LG	8	
11 01-3953	SOC SET SCREW, HALF DRG, LONG-LOCK	2	
10 D60-10A-SA	HANDLE ASSEMBLY	1	
9 D80-9	SEGMENT	2	
8 DL800-8	DOUBLE SPLIT COLLAR	2	
7 D80-7	JAW PLATE	4	
6 DL800-6	STATIONARY JAW	1	
5 DL800-5	SCREW	1	
3R DL800-3R	REAR NUT	1	
3F DL800-3F	FRONT NUT	1	
2 DL800-2	MOVABLE JAW	2	
1 DL800-1	BODY MACHINING	1	

PART NO.	DESCRIPTION	QTY	PRICE
1625 16A-1625	TRUST BEARING WASHER	1	
274 DL800-274	CLUTCH SPACER	1	
273 DL800-273	CLUTCH	1	
272 DL800-272	COLLAR TRUST WASHER	1	
249 D80XL-249	CHIP GUARD (LONG)	1	