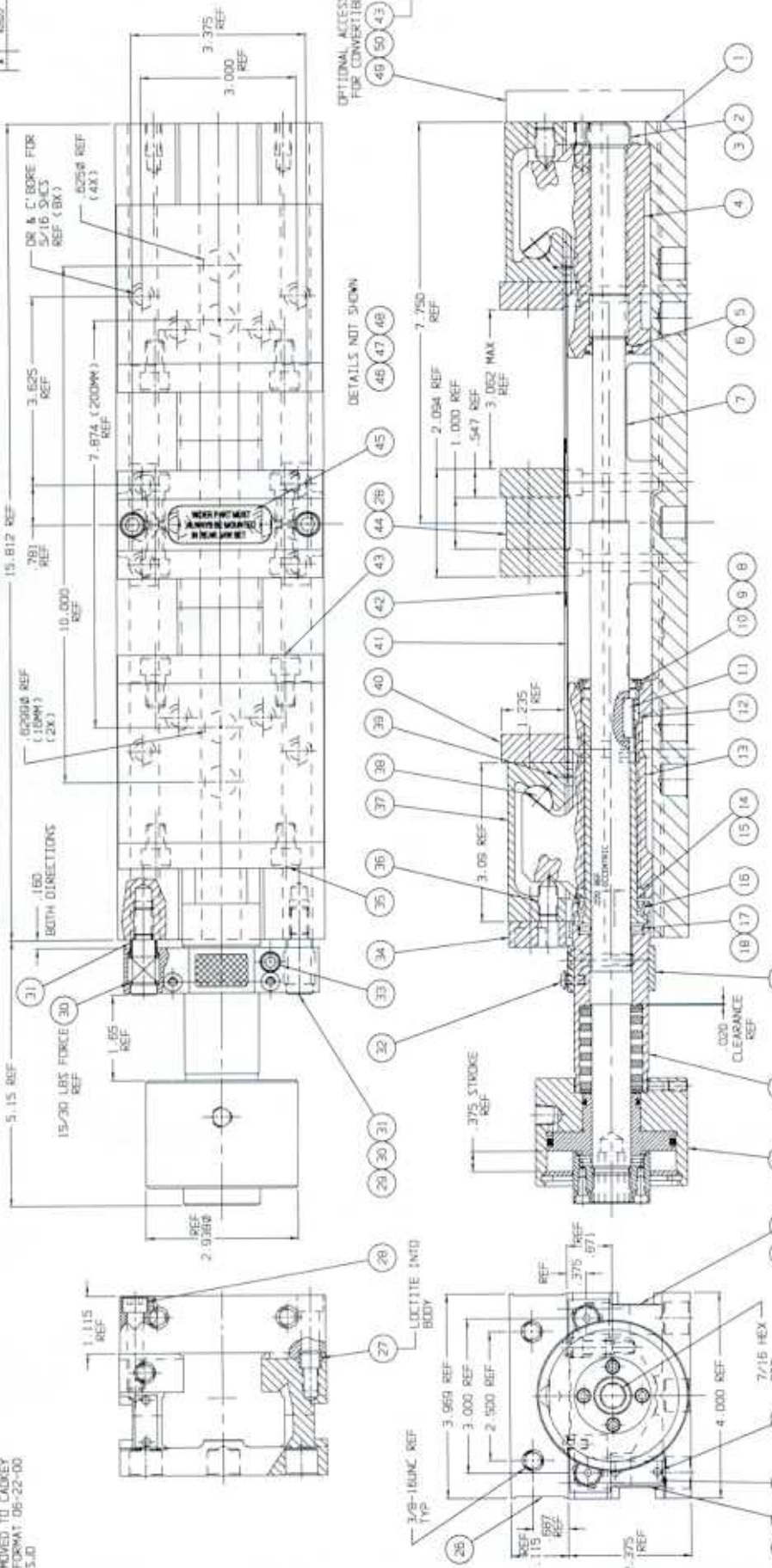


MOVED TO CADKEY
 FORMAT 06-22-00
 5.LD



ITEM PART NO. DWG. NO. DESCRIPTION QTY

1	DLH-30	DLH-30	HYDRAULIC VISE	1
2	DLH-30	DLH-30	HYDRAULIC VISE	1
3	DLH-30	DLH-30	HYDRAULIC VISE	1
4	DLH-30	DLH-30	HYDRAULIC VISE	1

ITEM PART NO. DWG. NO. DESCRIPTION QTY

37	DLH-30	DLH-30	HYDRAULIC VISE	1
38	DLH-30	DLH-30	HYDRAULIC VISE	1
39	DLH-30	DLH-30	HYDRAULIC VISE	1
40	DLH-30	DLH-30	HYDRAULIC VISE	1
41	DLH-30	DLH-30	HYDRAULIC VISE	1
42	DLH-30	DLH-30	HYDRAULIC VISE	1
43	DLH-30	DLH-30	HYDRAULIC VISE	1
44	DLH-30	DLH-30	HYDRAULIC VISE	1
45	DLH-30	DLH-30	HYDRAULIC VISE	1
46	DLH-30	DLH-30	HYDRAULIC VISE	1
47	DLH-30	DLH-30	HYDRAULIC VISE	1
48	DLH-30	DLH-30	HYDRAULIC VISE	1

ITEM PART NO. DWG. NO. DESCRIPTION QTY

30	DLH-30	DLH-30	HYDRAULIC VISE	1
31	DLH-30	DLH-30	HYDRAULIC VISE	1
32	DLH-30	DLH-30	HYDRAULIC VISE	1
33	DLH-30	DLH-30	HYDRAULIC VISE	1
34	DLH-30	DLH-30	HYDRAULIC VISE	1
35	DLH-30	DLH-30	HYDRAULIC VISE	1
36	DLH-30	DLH-30	HYDRAULIC VISE	1
37	DLH-30	DLH-30	HYDRAULIC VISE	1
38	DLH-30	DLH-30	HYDRAULIC VISE	1
39	DLH-30	DLH-30	HYDRAULIC VISE	1
40	DLH-30	DLH-30	HYDRAULIC VISE	1
41	DLH-30	DLH-30	HYDRAULIC VISE	1
42	DLH-30	DLH-30	HYDRAULIC VISE	1
43	DLH-30	DLH-30	HYDRAULIC VISE	1
44	DLH-30	DLH-30	HYDRAULIC VISE	1
45	DLH-30	DLH-30	HYDRAULIC VISE	1
46	DLH-30	DLH-30	HYDRAULIC VISE	1
47	DLH-30	DLH-30	HYDRAULIC VISE	1
48	DLH-30	DLH-30	HYDRAULIC VISE	1

ITEM PART NO. DWG. NO. DESCRIPTION QTY

30	DLH-30	DLH-30	HYDRAULIC VISE	1
31	DLH-30	DLH-30	HYDRAULIC VISE	1
32	DLH-30	DLH-30	HYDRAULIC VISE	1
33	DLH-30	DLH-30	HYDRAULIC VISE	1
34	DLH-30	DLH-30	HYDRAULIC VISE	1
35	DLH-30	DLH-30	HYDRAULIC VISE	1
36	DLH-30	DLH-30	HYDRAULIC VISE	1
37	DLH-30	DLH-30	HYDRAULIC VISE	1
38	DLH-30	DLH-30	HYDRAULIC VISE	1
39	DLH-30	DLH-30	HYDRAULIC VISE	1
40	DLH-30	DLH-30	HYDRAULIC VISE	1
41	DLH-30	DLH-30	HYDRAULIC VISE	1
42	DLH-30	DLH-30	HYDRAULIC VISE	1
43	DLH-30	DLH-30	HYDRAULIC VISE	1
44	DLH-30	DLH-30	HYDRAULIC VISE	1
45	DLH-30	DLH-30	HYDRAULIC VISE	1
46	DLH-30	DLH-30	HYDRAULIC VISE	1
47	DLH-30	DLH-30	HYDRAULIC VISE	1
48	DLH-30	DLH-30	HYDRAULIC VISE	1

NOTES:
 1. CLAMPING RANGE: 0" TO 3.000".
 2. SEE SHEET 3 FOR DRG DRAWINGS.
 3. SEE SHEET 4 FOR CATALOG DRAWINGS.

ACCESSORY FOR CONVERTIBLE OPTION:

HYDRAULIC DISPLACEMENT: 1.47 CUBIC INCHES.
 CLAMPING PRESSURE AT 3,200 PSI:
 APPROX 10,500 ACTUAL.
 OPERATING HYD PRESSURE:
 200 PSI MIN, 3,200 PSI MAX.

PISTON AREA: 3.91 SQ INCHES.
 HYDRAULIC DISPLACEMENT: 1.47 CUBIC INCHES.
 CLAMPING PRESSURE AT 3,200 PSI:
 APPROX 10,500 ACTUAL.
 OPERATING HYD PRESSURE:
 200 PSI MIN, 3,200 PSI MAX.

LOCATE INTO BODY

3/8-16UNC REF

3.969 REF

3.000 REF

2.500 REF

1.115 REF

3.375 REF

7/16 HEX REF

4.1000 REF

3

25 22 24

DETAILS NOT SHOWN

7.750 REF

2.084 REF

1.000 REF

.547 REF

3.052 REF

3.08 REF

1.235 REF

375 STROKE REF

020 CLEARANCE REF

19

20 21

22

23

24

25

26

27

28

29

30

31

32

33

34

35

36

37

38

39

40

41

42

43

44

45

46

47

48

49

50

51

52

53

54

55

56

57

58

59

60

61

62

63

64

65

66

67

68

69

70

71

72

73

74

75

76

77

78

79

80

81

82

83

84

85

86

87

88

89

90

91

92

93

94

95

96

97

98

99

100

OPTIONAL ACCESSORY FOR CONVERTIBLE

40 50 43

2-ADDITIONAL REF G

ITEM PART NO. DWG. NO. DESCRIPTION QTY

99	DLH-30	DLH-30	HYDRAULIC VISE	1
100	DLH-30	DLH-30	HYDRAULIC VISE	1

THESE ITEMS CHANGE FOR METRIC VISE

REVISED 8-22-00

DLH430

HYDRAULIC

D2012B

REVISED 8-22-00

DLH430

REVISED 8-22-00

(4) (3) (2) ()

14	DL430-331	NO DWG	WIPER RING MPI(MACROTECH POLYSEAL INC) #959-9(LUBRITHANE) .998 ROD DIA X 1.278 O.D. X .104 (URETHANE)	1	P
	DL430-3F	C19458	FRONT NJT	1	M
	DLH430-209	B20133	SLEEVE (THREADED)	1	M
11	DLH600-290	A18248	KEY	1	M
10	DLH430-217	NO DWG	SMALLEY MEDIUM DUTY SPIRAL RETAINING RING #WH-103 (1.031 HOUSING DIA)	1	P
9	DLH430-97	A20132	WIPER RING MPI(MACROTECH POLYSEAL INC) #959-5 (LUBRITHANE) .748 ROD DIA X 1.016 O.D. X .104 (URETHANE)	1	P
8	DLH430-61	B20131	SPACER	1	M
7	DLH430-5	D20130	SCREW	1	M
6	DL430-217	NO DWG	SMALLEY MEDIUM DUTY SPIRAL RETAINING RING #WH-90 (.906 HOUSING DIA)	1	P
5	DL430-97	A20079	WIPER RING MPI(MACROTECH POLYSEAL INC) #959-3 (LUBRITHANE) .623 ROD DIA X .891 O.D. X .104 (URETHANE)	1	P
4	DL430-3R	C19453	REAR NJT	1	M
3	07-0230	NO DWG	U-TYPE DRIVE SCREW #2 X 1/4 LG	4	P
2	DL400-218	B10987	END CAP	1	P
* 1	DLH430-1	D20129	BODY MACHINED	1	M
ITEM	PART NO.	DWG. NO.	DESCRIPTION	QTY	PUR/MFGR

CADKEY\WISE\DLH\DLH430

 MINNEAPOLIS	TOLERANCES UNLESS NOTED INCHES DECIMAL .X ± .05 .XXXX ± .0005 .XX ± .02 ANGLES ± 1° .XXX ± .005		TOOL NAME DL430 HYDRAULIC VISE MODEL OF TOOL -
	DESIGNED BERNSTEIN		TITLE DL430 HYDRAULIC ASSEMBLY
	DETAILED DIRSCHL 06-22-00		DWG. SIZE D KURT DWG. NO. D20128 REVISION LEVEL A
	CHECKED APPROVED		CUSTOMER DLH430 CUST. PART NO. DLH430 TOOL NO. SCALE FULL SHEET 1 OF 4

(13), (2), (11), (10)(9)(8)

(7), (6)(5)

* 37	DL430-2	D19471	MOVABLE JAW	2	M	
* 36	01-3307	NO DWG	SOC HD SET SCR-CONE POINT-LONG LOCK (NYLON STRIP ONLY) 3/8-16NC X 3/4 LG	2		
* 35	00-1348	NO DWG	SHCS 3/8- 6NC X 1/2 LG	2	P	
* 34	DL400-227	B18144	RETAINING PLATE	1	M	
* 33	00-1293	NO DWG	SHCS 1/4-20NC X 1" LG	1	P	
* 32	03-0124	NO DWG	BHCS #10-24NC X 3/8 LG	2	P	
	31	DL400-213A	B11015	SPRING BUSHING	2	M
	30	DL400-197	NO DWG	SPEC COMPRESSION SPRING (MUSIC WIRE) #C0600-072-0880 (.600 O.D. X .072Ø X .88 LG)	2	
* 29	DL400-176A		SOC HD SHLD SCR 1/2Ø X 3/4 LG	2		
* 28	00-1328	NO DWG	SHCS 5/16-18NC X			
	27	DL430-278	A19470	SECONDARY LOCATOR	1	
	26	DL400-111	A19140	KURT LOGO TAG	4	
		DL430-313R	B19494	WISE BODY STICKER (LEFT REAR)	1	P
* 25	DLH430-102	A20135	MODEL\SERIAL NUMBER TAG	1	P	
		DL430-314R	B19492	WISE BODY STICKER (RIGHT REAR)	1	P
* 24	DLH430-314F	B20134	WISE BODY STICKER (FRONT)	2	P	
* 21	4THU	B18341	4" THREADED HYD UNIT ASS'Y	1	M	
	20	DLH400-56	B18337	CONNECTOR	1	M
* 19	DLH400-212A	B18529	HOLDING BLOCK	1	M	
	18	D40-41	NO DWG	THRUST BEARING TORRINGTON #NTA-1220	1	P
	17	DL400-42A	NO DWG	THRUST WASHER TORRINGTON #TRB-1220	2	P
	16	DLH400-79	NO DWG	U-CLIP SEAL #626-50100 1" I.D. X 1 5/16 O.D. X 5/32 CROSS SECTION	1	P
	15	DL430-231	NO DWG	SMALLEY MEDIUM DUTY SPIRAL RETAINING RING #WH-128 (1.281 HOUSING DIA)	1	P

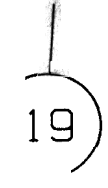
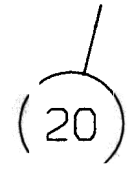
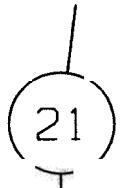
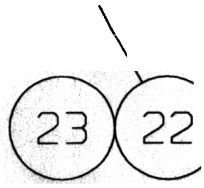
ITEM	PART NO.	DWG	NO	DESCRIPTION	QTY	PLR/ MFR
------	----------	-----	----	-------------	-----	-------------

DLH430

SHEET

4

X



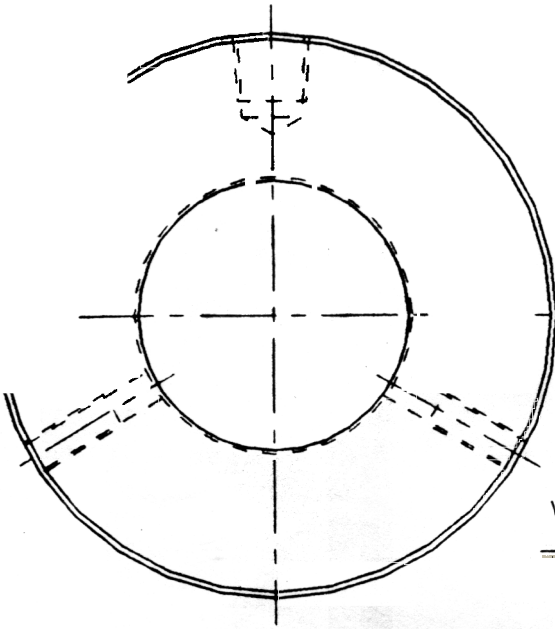
REF

PISTON AREA: 3.91 SQ INCHES.
 HYDRAULIC DISPLACEMENT: 1.47 CUBIC INCHES
 CLAMPING PRESSURE AT 3,200 PSI
 12,512 LBS THEORETICAL
 APPROX 10,500 ACTUAL
 OPERATING HYD PRSEEURE:
 200 PSI MIN, 3,200 PSI MAX.

00" .
 NGS .
 RAWINGS

ITEM	PART NO	DWG. NO.	DESCRIPTION	QTY	PUR/MFGR
OPTION	* 50	00-1321	NO DWG SHCS 5/16-18NC X 3/4 LG	4	P
	* 49	DL430-239	B19849 HOLDING PLATE	1	M
	48	DL400-248	NO DWG CHIP GUARD SHORT .015 X 1.625 X 5.00	2	P
	47	DLH600-10-SA	B18302 HANDLE ASSEMBLY	1	
	* 46	DL400-219	NO DWG T-HANDLE WRENCH (3/16 INCH HEX) HOLD-KROME #58410	1	
	45	DL430-223	A19541 CAUTION STICKER	1	P
	* 44	DL430-6	C19472 STATIONARY JAW	1	M
	* 43	00-1350	NO DWG SHCS 3/8-16NC X 5/8 LG	8	P
	42	DL430-248	B19473 STATIONARY CHIP GUARD	1	P/M
WISE	41	DL430-249	B19474 MOVABLE CHIP GUARD	2	P/M
	* 40	D40-7	B3248 JAW PLATE	4	M
	39	04-4008	NO DWG ROLL PIN .062φ X 5/16 LG	2	P
	38	D40-9	B10671 SEGMENT	2	M

REV.	ECN	DESCRIPTION	DATE	BY
A	V0695	RELEASED	04/17/92	SJD



VIEW Z-

→ X

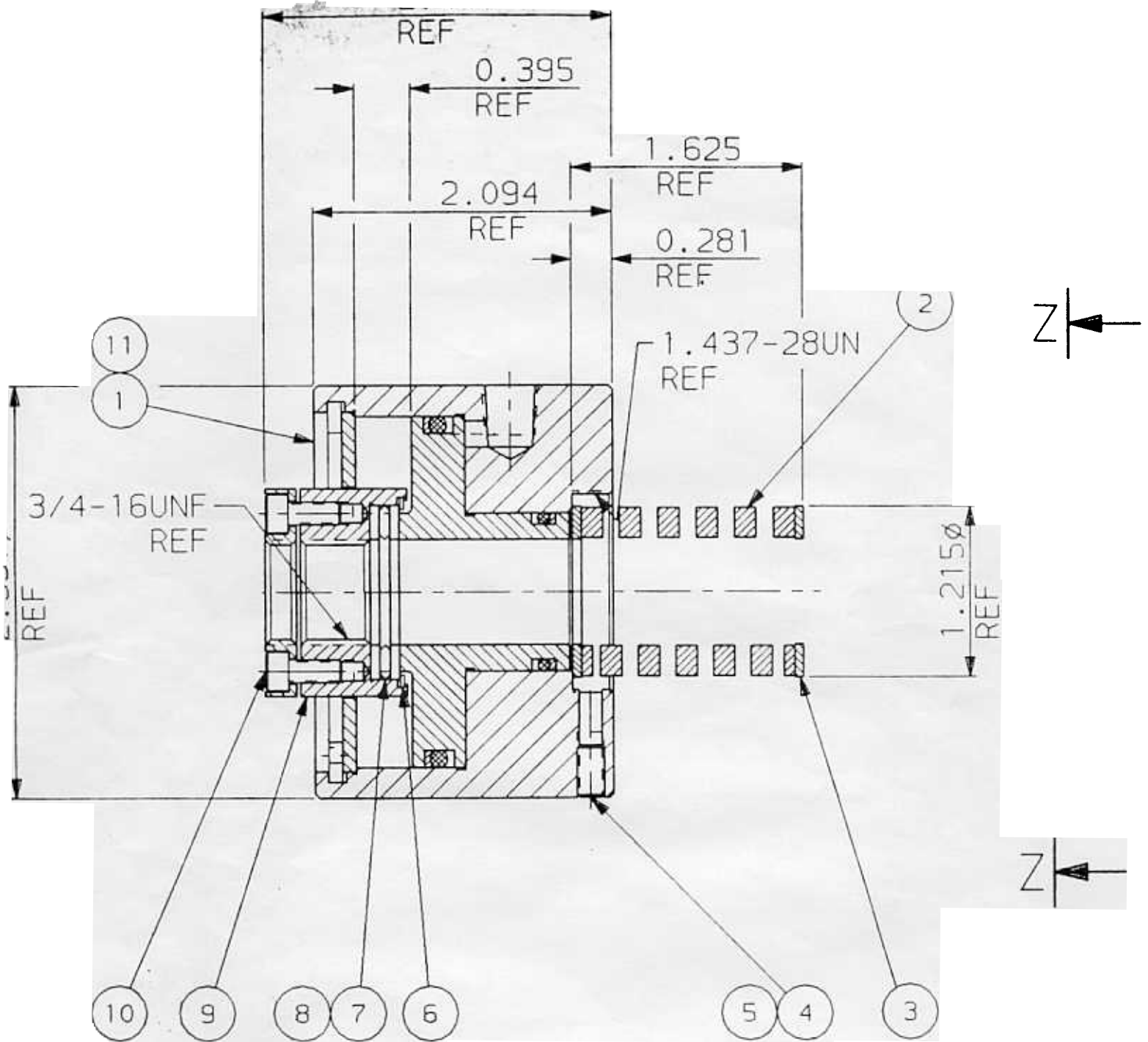
1 of 2.

0	4THU-102	A18383	MODEL/SERIAL NUMBER STICKER	1	P
9	00-1191	NO DWG	SHCS #8-32NC X 3/8 LG	4	P
8	4THU-8	C18347	2-PIECE RETAINING NUT	1	M
7	D40-41	NO DWG	THRUST BEARING TORRINGTON #NTA-1220	1	P
6	DL400-42A	NO DWG	THRUST WASHER TORRINGTON #TRB-1220	2	P
5	4THU-231	NO DWG	RETAINING RING "SMALLEY" LIGHT DUTY #VH131, 1.369 O.D. X .088 RAD WALL X .025 THICK	1	P
4	6THU-292	A18299	BRASS PLUG	2	M
3	01-1464	NO DWG	SSC #10-24NC X 3/8 LG FLT PT	2	P
2	4THU-230	A18346	WASHER	2	M
1	4THU-87	A18345	COMPRESSION SPRING	1	P/M
	4THU-P	B18429	4" THREADED HYDRAULIC UNIT PURCHASE	1	P
ITEM	PART NO.	DWG. NO.	DESCRIPTION	QTY.	PUR. MFGR

V. CC > M. 4THU

	TOOL NAME 4" THREADED HYDRAULIC UNIT		MODEL OF TOOL	
	TOLERANCES UNLESS NOTED INCHES DECIMAL X ± .05 .XX ± .02 .XXX ± .005 .XXXX ± .0005 ANGLES ± 1°		KURT DWG. NO. B18341	
	DESIGNED BERNSTEIN D'R SCHEL 04/17/		REVISION LEVEL A CUSTOMER 4THU	

4" THREADED
HYDRAULIC UNIT

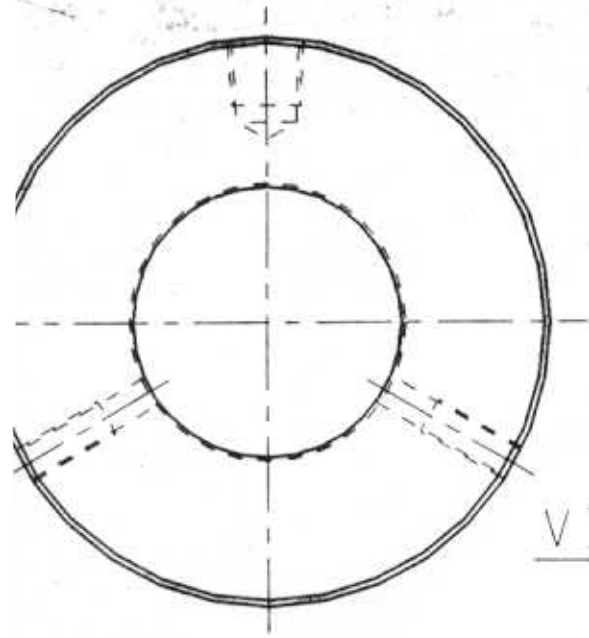


NOTES:

2 of 2.

- 1 STROKE: .375
- PISTON AREA: 3.91 SQ INCHES.
- HYDRAULIC DISPLACEMENT: 1.47 CUBIC INCHES.
- 4 CLAMPING PRESSURE AT 3,200 PSI= 12,512 THEORETICAL.
APPROX 10,500 ACTUAL
- 5 OPERATING HYDRAULIC PRESSURE: 200 PSI MIN.
3,200 PSI MAX.

REV.	ECN	DESCRIPTION	DATE	BY
A	V0802	RELEASED	12/16/92	SJD



VIEW Z-Z

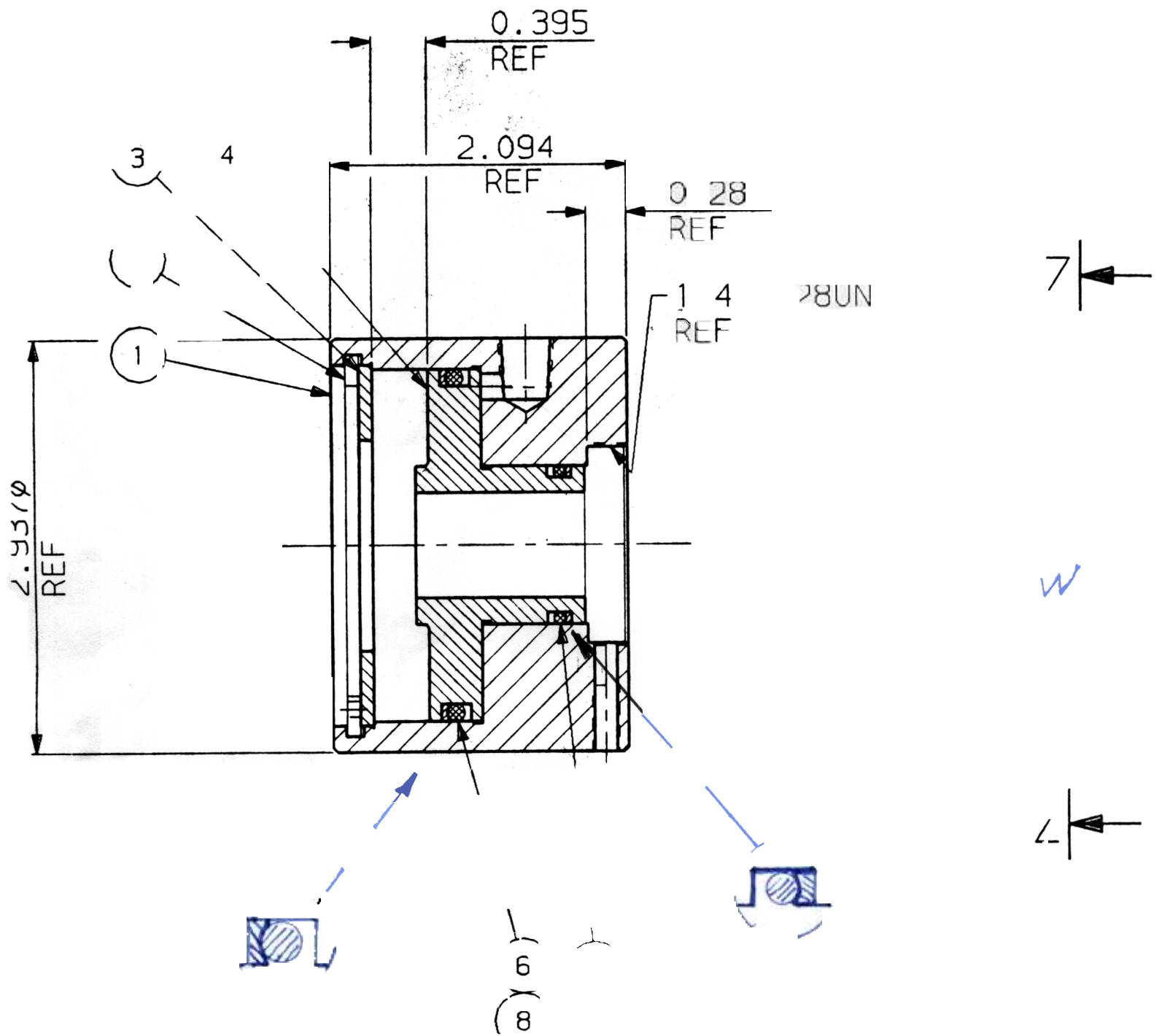
DLH400

1 of 2

8	4THU-188	NO DWG	<i>Backer</i> PARKER PARBAK #8-228 2.508 O.D. X 2.272 I.D. X .050 THICK	1	P
7	4THU-187	NO DWG	<i>Backer</i> PARKER PARBAK #8-119 1.128 O.D. X .956 I.D. X .053 THICK	1	P
6	4THU-96	NO DWG	<i>O-ring</i> PARKER POLYURETHANE O-RING #2-228 2 1/4 I.D. X 2 1/2 O.D. (1/8 C.S.)	1	P
5	4THU-98	NO DWG	<i>O-ring</i> PARKER POLYURETHANE O-RING #2-119 1 5/16 I.D. X 1 1/8 O.D. (3/32 C.S.)	1	P
4	4THU-93	B18344	<i>NIA</i> PISTON	1	M
3	4THU-229	A18343	<i>NIA</i> RETAINER	1	M
2	4THU-232	NO DWG	<i>NIA</i> RETAINING RING "TRUARC" BASIC INTERNAL #NS000-256, FOR 2 9/16 DIA	1	P
1	4THU-90	C18342	<i>NIA</i> CYLINDER HOUSING	1	M
ITEM	PART NO.	DWG. NO.	DESCRIPTION	QTY.	PUR / MFR

/ . CC > M . 4THU > 4THU - P

	TOOL NAME 4" THREADED HYDRAULIC UNIT		MODEL OF TOOL	
	TOLERANCES UNLESS NOTED INCHES DECIMAL .X ± .05 .XX ± .02 .XXX ± .005 .XXXX ± .0005 ANGLES ± 1°		DWG SIZE B	KURT DWG. NO. B18429
	TITLE 4" THREADED HYDRAULIC UNIT (PURCHASE)		REVISION LEVEL A	
	IGNED BERNSTEIN	DATE 12/16/92	CUSTOMER 4THU - P	



NOTES

- STROKE 375 2 of 2. DLH400
- 2 PLS ON AREA 3.9 SQ INCH
- 3 HYDRAULIC DISPLACEMENT 7 CUB INCH
- 4 CLAMPING PRESSURE AT 3200 PSI 252 THEORE CAL
 APPROX 0.500 ACTUAL
- OPERATING HYDRAULIC PRESSURE 200 PSI N.
 3200 PSI MAX