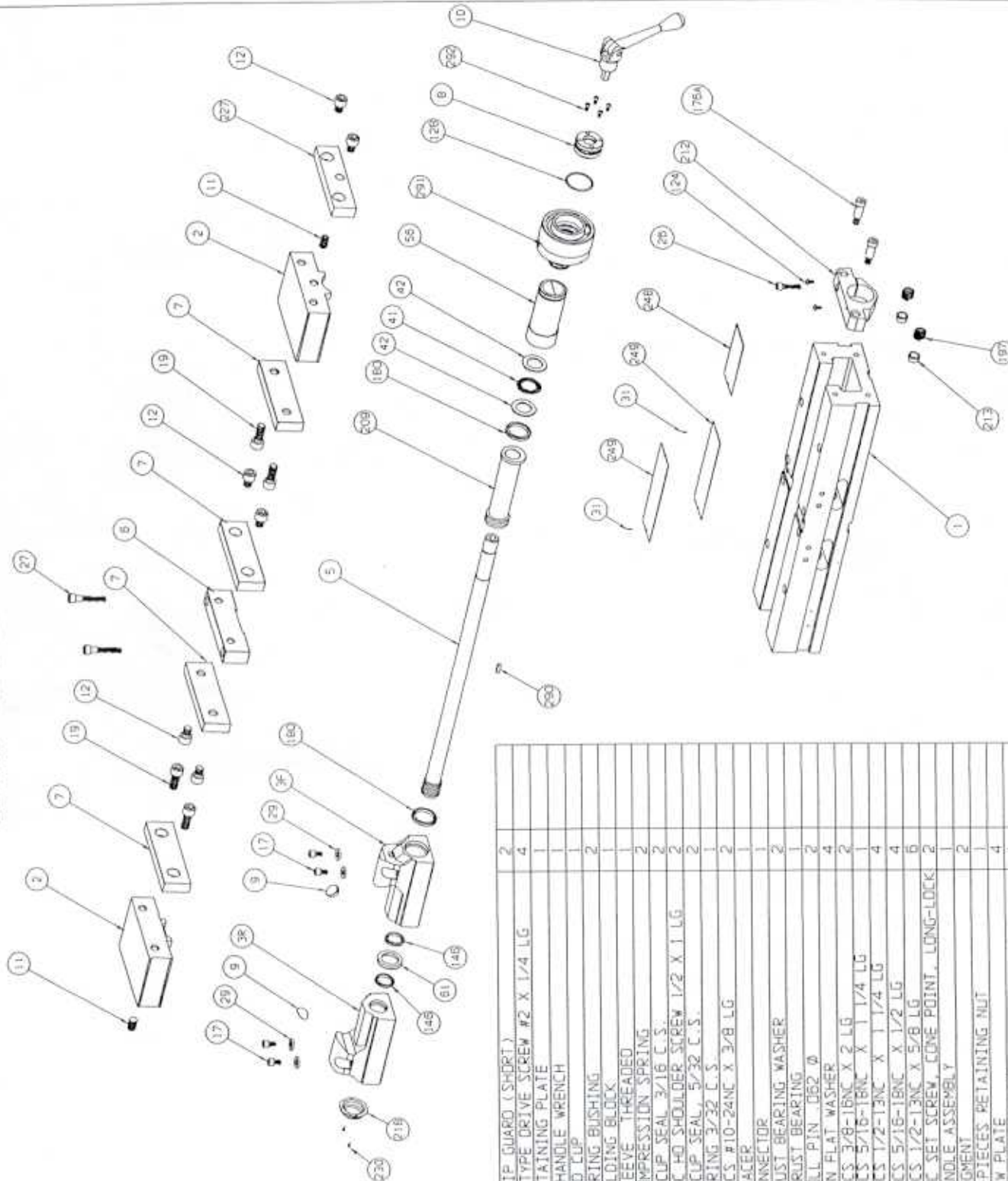


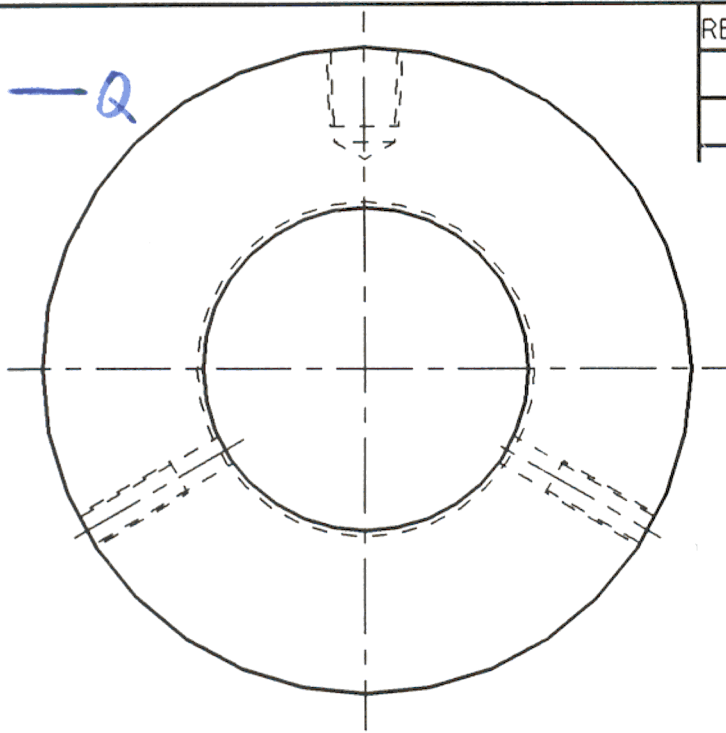
DLH600™ REPLACEMENT PARTS



PART NO	DESCRIPTION	QTY	PRICE	PART NO.	DESCRIPTION	QTY	PRICE
248	DL600-248A CHIP GUARD (SHORT)	2		292	00-1191 SHCS #8-32NC X 3/8 LG	4	
230	U-TYPE DRIVE SCREW #2 X 1/4 LG	4		291	6THU-P 6" THREADED HYD UNIT ASS'Y	1	
227	RETAINING PLATE	1		290	DLH600-290 KEY	1	
219	DL600-219 T-HANDLE WRENCH	1		249	DL600-249A CHIP GUARD (LONG)	2	
218	DL600-218 END CUP	2					
213	DL600-213B SPRING BUSHING	2					
212	DLH600-212 HOLDING BLOCK	1					
209	DLH600-209 SLEEVE THREADED	2					
197	DL600-197 COMPRESSION SPRING	2					
180	DL600-180 U-CUP SEAL 3/16 C.S.	2					
176	DL600-176A SDC HO SHOULDER SCREW 1/2 X 1 LG	2					
146	DL600-146 U-CUP SEAL, 5/32 C.S.	2					
128	3600V-128 O-RING 3/32 C.S.	1					
124	03-0124 BHCS #10-24NC X 3/8 LG	2					
61	DLH600-61 SPACER	1					
56	DLH600-56 CONNECTOR	1					
42	DLH600-42 TRUST BEARING WASHER	2					
41	DL60-41 THRUST BEARING	2					
31	DL60-41 ROLL PIN Ø62 Ø	2					
29	DL600-29 HON FLAT WASHER	4					
27	DL600-27 SHCS 3/8-16NC X 2 LG	2					
26	DL600-26 SHCS 5/16-18NC X 1 1/4 LG	2					
19	DL600-19 SHCS 1/2-13NC X 1 1/4 LG	4					
12	DL600-12 SHCS 5/16-18NC X 1/2 LG	4					
12	DL600-12 SHCS 1/2-13NC X 5/8 LG	6					
11	DL600-11 SDC SET SCREW, CONE POINT, LONG-LOCK	2					
10	DLH600-10 HANDLE ASSEMBLY	2					
9	DL60-9 SEGMENT	2					
8	DL600-8 2-PIECES RETAINING NUT	1					
7	DL600-7 JAW PLATE	4					
6	DL600-6C STATIONARY JAW	1					
5	DLH600-5 SCREW	1					
3R	DL600-3RC REAR NUT	1					
3F	DL600-3FB FRONT NUT	1					
2	DL600-2A MOVABLE JAW	2					
1	DL600-1C BODY MACHINING	1					

PART NO.	DESCRIPTION	QTY	PRICE
292	00-1191 SHCS #8-32NC X 3/8 LG	4	
291	6THU-P 6" THREADED HYD UNIT ASS'Y	1	
290	DLH600-290 KEY	1	
249	DL600-249A CHIP GUARD (LONG)	2	

Q





VIEW Z-Z

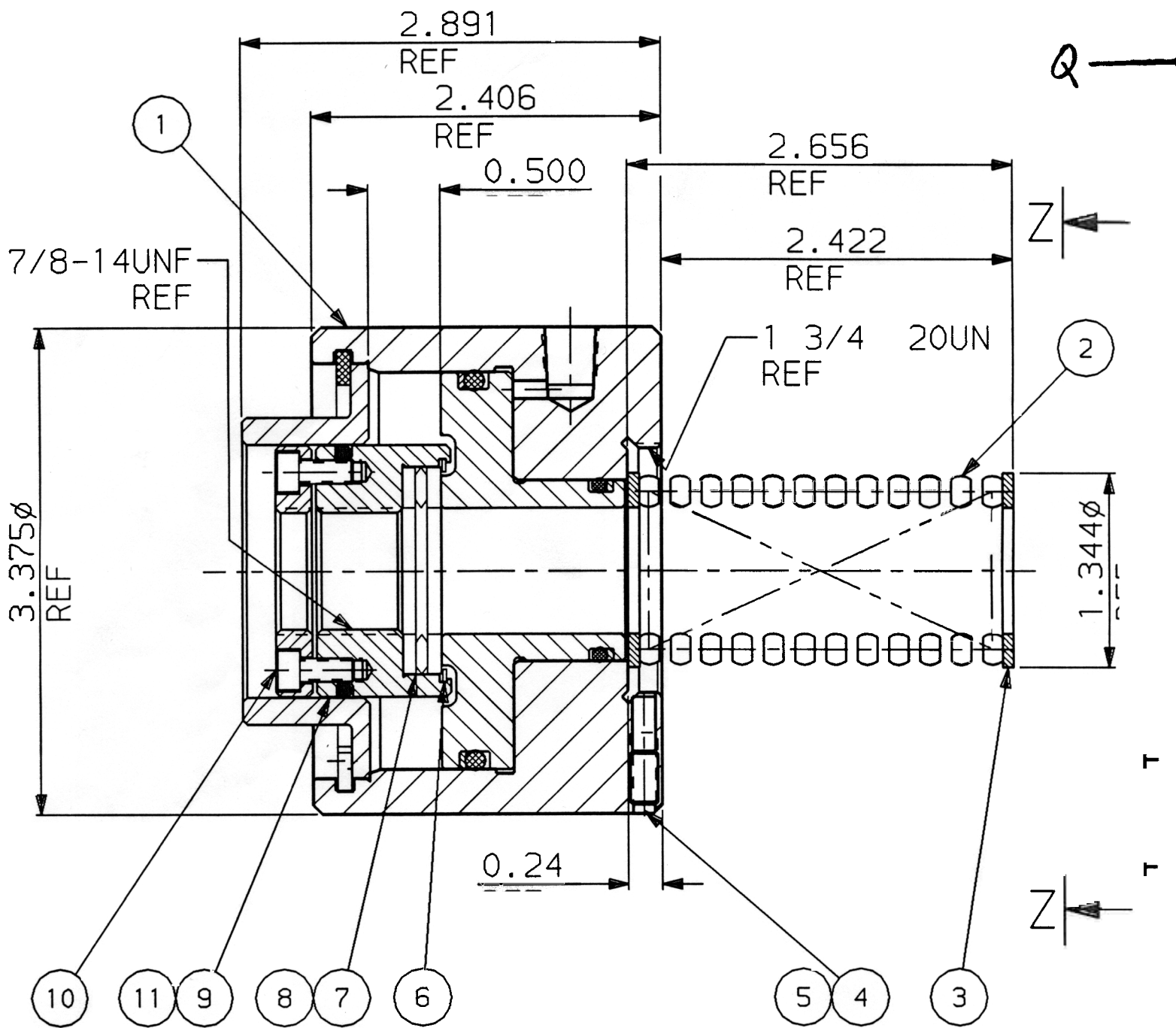
REV.	ECO	DESCRIPTION	DATE	BY
A	V0987	RELEASED	02/07/94	SJC
B	V1170	SEE ECO	03/22/95	SJC

V0987

12	6.5THU-102	A18645	MODEL/SERIAL NUMBER STICKER	1	P
11	3600V-128	NO DWG	O-RING 1 9/16 I.D. X 1 3/4 O.D. X 3/32 C.S. 70 DUROMETER	1	
10	00-1191	NO DWG	SHCS #8-32NC X 3/8 LG	4	
	6.5THU-8	C18635	2-PIECE RETAINING NUT	1	
	D50-41	NO DWG	THRUST BEARING TORRINGTON #NTA-1423	1	
	D50-42	NO DWG	THRUST WASHER TORRINGTON #TRC-1423	2	
	6.5THU-231	NO DWG	RETAINING RING "SMALLEY" LIGHT DUTY #VH150, 1.559 O.D. X .088 RAD WALL X .025 THICK	1	
	6THU-292	A18299	BRASS PLUG	2	
	01-1464	NO DWG	SSC #10-24NC X 3/8 LG FLT PT	2	
	360HU-230	A11065	WASHER	2	
	6.5THU-87	B18634	COMPRESSION SPRING	1	
	6.5THU-P	B18633	6.5" THREADED HYDRAULIC UNIT PURCHASE	1	
ITEM	PART NO.	DWG. NO.	DESCRIPTION	QTY.	PUR MFG

V. CC/M. 6.5THU

 MINNEAPOLIS	TOLERANCES UNLESS NOTED INCHES DECIMAL .X ± .05 .XX ± .02 .XXX ± .005 .XXXX ± .0005 ANGLES ± 1°		TOOL NAME 6.5 THREADED HYDRAULIC UNIT TITLE 6.5 THREADED HYDRAULIC UNIT (.500 STROKE)	MODEL OF TOOL DWG SIZE B	KURT DWG. NO. B18632 REVISION LEVEL: B
	DESIGNED BERNSTEIN		DESCRIPTION OR MATERIAL ASSEMBLY	TOOL NO. -	SCALE FULL SHEET 1 OF 1
	DETAILED DIRSCHEL	02/07/94			
	CHECKED 				
APPROVED					



12 NOT SHOWN

NOTES:

- 1. STROKE: .50"
- 2. PISTON AREA: 4.71 in².
- 3. HYDRAULIC DISPLACEMENT: 2.36 in³
- 4. CLAMPING PRESSURE @ 3,200 ps = 15,070 THEORETICAL.
12,600 ACTUAL.
- 4. OPERATING HYDRAULIC PRESSURE: 200 psi MIN.
3,200 ps: MAX.

Q