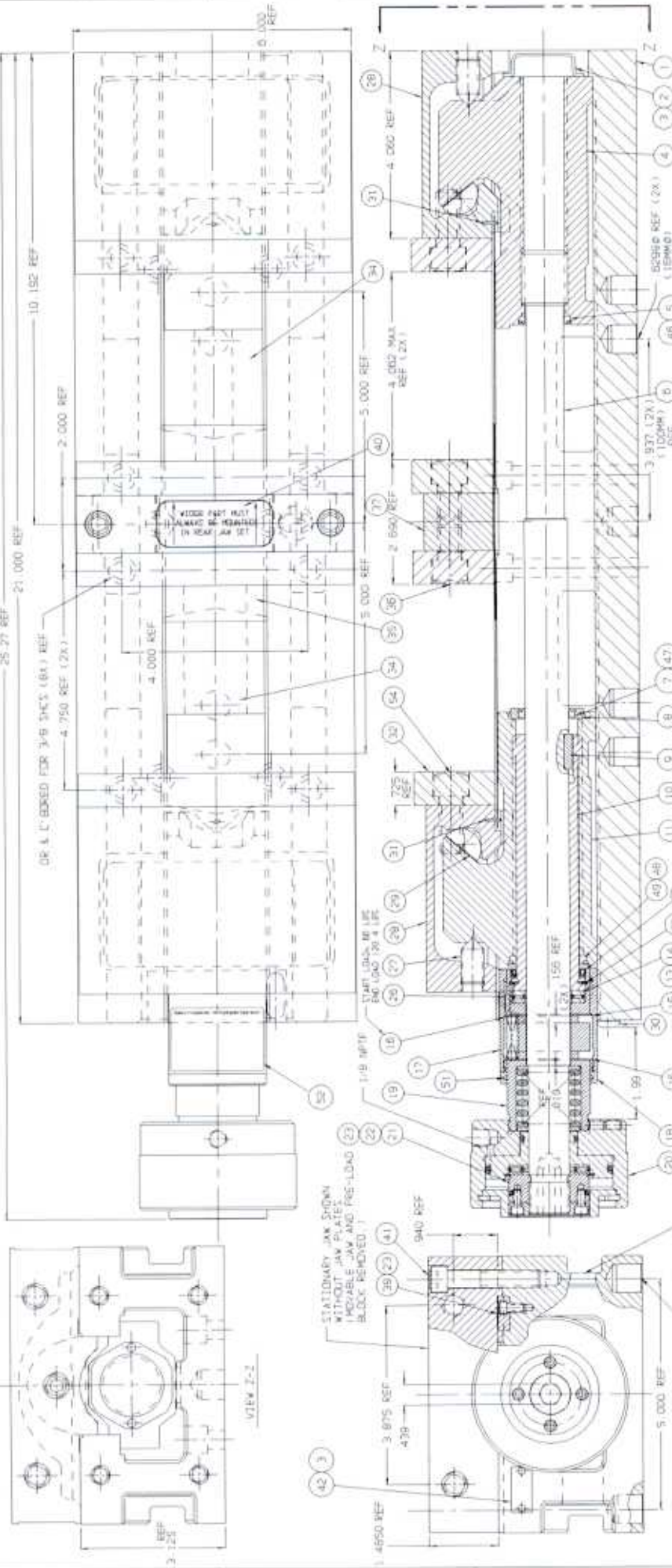


REV	BY	DATE	DESCRIPTION	REV	BY	DATE	DESCRIPTION
E	9069			B	0719	06-03-15	REVISED
				A	0719	06-03-15	REVISED
				C	0719	06-03-15	REVISED
				D	0719	06-03-15	REVISED



- NOTES:
- DETAILS 24, 25, 29, 32, 33, 34, 35, 36, 37, 40, 41, 42, 44, 45, 46, 47, 48, 49, 50, 51, 52, 53, 54, 55, 56, 57, 58, 59, 60, 61, 62, 63, 64, 65, 66, 67, 68, 69, 70, 71, 72, 73, 74, 75, 76, 77, 78, 79, 80, 81, 82, 83, 84, 85, 86, 87, 88, 89, 90, 91, 92, 93, 94, 95, 96, 97, 98, 99, 100, 101, 102, 103, 104, 105, 106, 107, 108, 109, 110, 111, 112, 113, 114, 115, 116, 117, 118, 119, 120, 121, 122, 123, 124, 125, 126, 127, 128, 129, 130, 131, 132, 133, 134, 135, 136, 137, 138, 139, 140, 141, 142, 143, 144, 145, 146, 147, 148, 149, 150, 151, 152, 153, 154, 155, 156, 157, 158, 159, 160, 161, 162, 163, 164, 165, 166, 167, 168, 169, 170, 171, 172, 173, 174, 175, 176, 177, 178, 179, 180, 181, 182, 183, 184, 185, 186, 187, 188, 189, 190, 191, 192, 193, 194, 195, 196, 197, 198, 199, 200, 201, 202, 203, 204, 205, 206, 207, 208, 209, 210, 211, 212, 213, 214, 215, 216, 217, 218, 219, 220, 221, 222, 223, 224, 225, 226, 227, 228, 229, 230, 231, 232, 233, 234, 235, 236, 237, 238, 239, 240, 241, 242, 243, 244, 245, 246, 247, 248, 249, 250, 251, 252, 253, 254, 255, 256, 257, 258, 259, 260, 261, 262, 263, 264, 265, 266, 267, 268, 269, 270, 271, 272, 273, 274, 275, 276, 277, 278, 279, 280, 281, 282, 283, 284, 285, 286, 287, 288, 289, 290, 291, 292, 293, 294, 295, 296, 297, 298, 299, 300, 301, 302, 303, 304, 305, 306, 307, 308, 309, 310, 311, 312, 313, 314, 315, 316, 317, 318, 319, 320, 321, 322, 323, 324, 325, 326, 327, 328, 329, 330, 331, 332, 333, 334, 335, 336, 337, 338, 339, 340, 341, 342, 343, 344, 345, 346, 347, 348, 349, 350, 351, 352, 353, 354, 355, 356, 357, 358, 359, 360, 361, 362, 363, 364, 365, 366, 367, 368, 369, 370, 371, 372, 373, 374, 375, 376, 377, 378, 379, 380, 381, 382, 383, 384, 385, 386, 387, 388, 389, 390, 391, 392, 393, 394, 395, 396, 397, 398, 399, 400, 401, 402, 403, 404, 405, 406, 407, 408, 409, 410, 411, 412, 413, 414, 415, 416, 417, 418, 419, 420, 421, 422, 423, 424, 425, 426, 427, 428, 429, 430, 431, 432, 433, 434, 435, 436, 437, 438, 439, 440, 441, 442, 443, 444, 445, 446, 447, 448, 449, 450, 451, 452, 453, 454, 455, 456, 457, 458, 459, 460, 461, 462, 463, 464, 465, 466, 467, 468, 469, 470, 471, 472, 473, 474, 475, 476, 477, 478, 479, 480, 481, 482, 483, 484, 485, 486, 487, 488, 489, 490, 491, 492, 493, 494, 495, 496, 497, 498, 499, 500, 501, 502, 503, 504, 505, 506, 507, 508, 509, 510, 511, 512, 513, 514, 515, 516, 517, 518, 519, 520, 521, 522, 523, 524, 525, 526, 527, 528, 529, 530, 531, 532, 533, 534, 535, 536, 537, 538, 539, 540, 541, 542, 543, 544, 545, 546, 547, 548, 549, 550, 551, 552, 553, 554, 555, 556, 557, 558, 559, 560, 561, 562, 563, 564, 565, 566, 567, 568, 569, 570, 571, 572, 573, 574, 575, 576, 577, 578, 579, 580, 581, 582, 583, 584, 585, 586, 587, 588, 589, 590, 591, 592, 593, 594, 595, 596, 597, 598, 599, 600, 601, 602, 603, 604, 605, 606, 607, 608, 609, 610, 611, 612, 613, 614, 615, 616, 617, 618, 619, 620, 621, 622, 623, 624, 625, 626, 627, 628, 629, 630, 631, 632, 633, 634, 635, 636, 637, 638, 639, 640, 641, 642, 643, 644, 645, 646, 647, 648, 649, 650, 651, 652, 653, 654, 655, 656, 657, 658, 659, 660, 661, 662, 663, 664, 665, 666, 667, 668, 669, 670, 671, 672, 673, 674, 675, 676, 677, 678, 679, 680, 681, 682, 683, 684, 685, 686, 687, 688, 689, 690, 691, 692, 693, 694, 695, 696, 697, 698, 699, 700, 701, 702, 703, 704, 705, 706, 707, 708, 709, 710, 711, 712, 713, 714, 715, 716, 717, 718, 719, 720, 721, 722, 723, 724, 725, 726, 727, 728, 729, 730, 731, 732, 733, 734, 735, 736, 737, 738, 739, 740, 741, 742, 743, 744, 745, 746, 747, 748, 749, 750, 751, 752, 753, 754, 755, 756, 757, 758, 759, 760, 761, 762, 763, 764, 765, 766, 767, 768, 769, 770, 771, 772, 773, 774, 775, 776, 777, 778, 779, 780, 781, 782, 783, 784, 785, 786, 787, 788, 789, 790, 791, 792, 793, 794, 795, 796, 797, 798, 799, 800, 801, 802, 803, 804, 805, 806, 807, 808, 809, 810, 811, 812, 813, 814, 815, 816, 817, 818, 819, 820, 821, 822, 823, 824, 825, 826, 827, 828, 829, 830, 831, 832, 833, 834, 835, 836, 837, 838, 839, 840, 841, 842, 843, 844, 845, 846, 847, 848, 849, 850, 851, 852, 853, 854, 855, 856, 857, 858, 859, 860, 861, 862, 863, 864, 865, 866, 867, 868, 869, 870, 871, 872, 873, 874, 875, 876, 877, 878, 879, 880, 881, 882, 883, 884, 885, 886, 887, 888, 889, 890, 891, 892, 893, 894, 895, 896, 897, 898, 899, 900, 901, 902, 903, 904, 905, 906, 907, 908, 909, 910, 911, 912, 913, 914, 915, 916, 917, 918, 919, 920, 921, 922, 923, 924, 925, 926, 927, 928, 929, 930, 931, 932, 933, 934, 935, 936, 937, 938, 939, 940, 941, 942, 943, 944, 945, 946, 947, 948, 949, 950, 951, 952, 953, 954, 955, 956, 957, 958, 959, 960, 961, 962, 963, 964, 965, 966, 967, 968, 969, 970, 971, 972, 973, 974, 975, 976, 977, 978, 979, 980, 981, 982, 983, 984, 985, 986, 987, 988, 989, 990, 991, 992, 993, 994, 995, 996, 997, 998, 999, 1000.

ITEM	PART NO	ENG NO	DESCRIPTION	QTY
1	00-1419	NO IN	VALVE PLATE	2
2	00-1420	NO IN	VALVE PLATE	2
3	00-1421	NO IN	VALVE PLATE	2
4	00-1422	NO IN	VALVE PLATE	2
5	00-1423	NO IN	VALVE PLATE	2
6	00-1424	NO IN	VALVE PLATE	2
7	00-1425	NO IN	VALVE PLATE	2
8	00-1426	NO IN	VALVE PLATE	2
9	00-1427	NO IN	VALVE PLATE	2
10	00-1428	NO IN	VALVE PLATE	2
11	00-1429	NO IN	VALVE PLATE	2
12	00-1430	NO IN	VALVE PLATE	2
13	00-1431	NO IN	VALVE PLATE	2
14	00-1432	NO IN	VALVE PLATE	2
15	00-1433	NO IN	VALVE PLATE	2
16	00-1434	NO IN	VALVE PLATE	2
17	00-1435	NO IN	VALVE PLATE	2
18	00-1436	NO IN	VALVE PLATE	2
19	00-1437	NO IN	VALVE PLATE	2
20	00-1438	NO IN	VALVE PLATE	2
21	00-1439	NO IN	VALVE PLATE	2
22	00-1440	NO IN	VALVE PLATE	2
23	00-1441	NO IN	VALVE PLATE	2
24	00-1442	NO IN	VALVE PLATE	2
25	00-1443	NO IN	VALVE PLATE	2
26	00-1444	NO IN	VALVE PLATE	2
27	00-1445	NO IN	VALVE PLATE	2
28	00-1446	NO IN	VALVE PLATE	2
29	00-1447	NO IN	VALVE PLATE	2
30	00-1448	NO IN	VALVE PLATE	2
31	00-1449	NO IN	VALVE PLATE	2
32	00-1450	NO IN	VALVE PLATE	2
33	00-1451	NO IN	VALVE PLATE	2
34	00-1452	NO IN	VALVE PLATE	2
35	00-1453	NO IN	VALVE PLATE	2
36	00-1454	NO IN	VALVE PLATE	2
37	00-1455	NO IN	VALVE PLATE	2
38	00-1456	NO IN	VALVE PLATE	2
39	00-1457	NO IN	VALVE PLATE	2
40	00-1458	NO IN	VALVE PLATE	2
41	00-1459	NO IN	VALVE PLATE	2
42	00-1460	NO IN	VALVE PLATE	2
43	00-1461	NO IN	VALVE PLATE	2
44	00-1462	NO IN	VALVE PLATE	2
45	00-1463	NO IN	VALVE PLATE	2
46	00-1464	NO IN	VALVE PLATE	2
47	00-1465	NO IN	VALVE PLATE	2
48	00-1466	NO IN	VALVE PLATE	2
49	00-1467	NO IN	VALVE PLATE	2
50	00-1468	NO IN	VALVE PLATE	2
51	00-1469	NO IN	VALVE PLATE	2
52	00-1470	NO IN	VALVE PLATE	2
53	00-1471	NO IN	VALVE PLATE	2
54	00-1472	NO IN	VALVE PLATE	2
55	00-1473	NO IN	VALVE PLATE	2
56	00-1474	NO IN	VALVE PLATE	2
57	00-1475	NO IN	VALVE PLATE	2
58	00-1476	NO IN	VALVE PLATE	2
59	00-1477	NO IN	VALVE PLATE	2
60	00-1478	NO IN	VALVE PLATE	2
61	00-1479	NO IN	VALVE PLATE	2
62	00-1480	NO IN	VALVE PLATE	2
63	00-1481	NO IN	VALVE PLATE	2
64	00-1482	NO IN	VALVE PLATE	2
65	00-1483	NO IN	VALVE PLATE	2
66	00-1484	NO IN	VALVE PLATE	2
67	00-1485	NO IN	VALVE PLATE	2
68	00-1486	NO IN	VALVE PLATE	2
69	00-1487	NO IN	VALVE PLATE	2
70	00-1488	NO IN	VALVE PLATE	2
71	00-1489	NO IN	VALVE PLATE	2
72	00-1490	NO IN	VALVE PLATE	2
73	00-1491	NO IN	VALVE PLATE	2
74	00-1492	NO IN	VALVE PLATE	2
75	00-1493	NO IN	VALVE PLATE	2
76	00-1494	NO IN	VALVE PLATE	2
77	00-1495	NO IN	VALVE PLATE	2
78	00-1496	NO IN	VALVE PLATE	2
79	00-1497	NO IN	VALVE PLATE	2
80	00-1498	NO IN	VALVE PLATE	2
81	00-1499	NO IN	VALVE PLATE	2
82	00-1500	NO IN	VALVE PLATE	2
83	00-1501	NO IN	VALVE PLATE	2
84	00-1502	NO IN	VALVE PLATE	2
85	00-1503	NO IN	VALVE PLATE	2
86	00-1504	NO IN	VALVE PLATE	2
87	00-1505	NO IN	VALVE PLATE	2
88	00-1506	NO IN	VALVE PLATE	2
89	00-1507	NO IN	VALVE PLATE	2
90	00-1508	NO IN	VALVE PLATE	2
91	00-1509	NO IN	VALVE PLATE	2
92	00-1510	NO IN	VALVE PLATE	2
93	00-1511	NO IN	VALVE PLATE	2
94	00-1512	NO IN	VALVE PLATE	2
95	00-1513	NO IN	VALVE PLATE	2
96	00-1514	NO IN	VALVE PLATE	2
97	00-1515	NO IN	VALVE PLATE	2
98	00-1516	NO IN	VALVE PLATE	2
99	00-1517	NO IN	VALVE PLATE	2
100	00-1518	NO IN	VALVE PLATE	2

ITEM	PART NO	ENG NO	DESCRIPTION	QTY
1	00-1419	NO IN	VALVE PLATE	2
2	00-1420	NO IN	VALVE PLATE	2
3	00-1421	NO IN	VALVE PLATE	2
4	00-1422	NO IN	VALVE PLATE	2
5	00-1423	NO IN	VALVE PLATE	2
6	00-1424	NO IN	VALVE PLATE	2
7	00-1425	NO IN	VALVE PLATE	2
8	00-1426	NO IN	VALVE PLATE	2
9	00-1427	NO IN	VALVE PLATE	2
10	00-1428	NO IN	VALVE PLATE	2
11	00-1429	NO IN	VALVE PLATE	2
12	00-1430	NO IN	VALVE PLATE	2
13	00-1431	NO IN	VALVE PLATE	2
14	00-1432	NO IN	VALVE PLATE	2
15	00-1433	NO IN	VALVE PLATE	2
16	00-1434	NO IN	VALVE PLATE	2
17	00-1435	NO IN	VALVE PLATE	2
18	00-1436	NO IN	VALVE PLATE	2
19	00-1437	NO IN	VALVE PLATE	2
20	00-1438	NO IN	VALVE PLATE	2
21	00-1439	NO IN	VALVE PLATE	2
22	00-1440	NO IN	VALVE PLATE	2
23	00-1441	NO IN	VALVE PLATE	2
24	00-1442	NO IN	VALVE PLATE	2
25	00-1443	NO IN	VALVE PLATE	2
26	00-1444	NO IN	VALVE PLATE	2
27	00-1445	NO IN	VALVE PLATE	2
28	00-1446	NO IN	VALVE PLATE	2
29	00-1447	NO IN	VALVE PLATE	2
30	00-1448	NO IN	VALVE PLATE	2
31	00-1449	NO IN	VALVE PLATE	2
32	00-1450	NO IN	VALVE PLATE	2
33	00-1451	NO IN	VALVE PLATE	2
34	00-1452	NO IN	VALVE PLATE	2
35	00-1453	NO IN	VALVE PLATE	2
36	00-1454	NO IN	VALVE PLATE	2
37	00-1455	NO IN	VALVE PLATE	2
38	00-1456	NO IN	VALVE PLATE	2
39	00-1457	NO IN	VALVE PLATE	2
40	00-1458	NO IN	VALVE PLATE	2
41	00-1459			

14	D60-41	NO DWG	THRUST BEARING TORRINGTON #NTA-1625		P
13	D60-42	NO DWG	THRUST WASHER TORRINGTON #TRC-1625	2	P
12		NO DWG	U-CLIP SEAL #626-50131 OR #666-50131 (80 DIAMETER) 1 5/16 I.D. X 1 5/8 O.D. X 5/32 C.S.		P
11		C19387	FRONT NUT		M
		B19528	SLEEVE (THREADED)		M
		A18248	KEY		M
8		B20117	SPACER		M
7		A20116	WIPER RING MPI (MACROTECH POLYSEAL INC) #959-8 (LUBRITHANE) .935 ROD DIA X 1.215 O.D. X .104 (URETHANE)		P
6			SCREW		M
5			WIPER RING MPI (MACROTECH POLYSEAL INC) #959-6 (LUBRITHANE) .810 ROD DIA X 1.090 O.D. X .104 (URETHANE)		P
4			REAR NUT		M
3		NO DWG	U-TYPE DRIVE SCREW #2 X 1/4 LG	4	P
2		B10951	END CAP	1	P
1		D19526	MACHINED BODY	1	M
ITEM		DWG. NO.	DESCRIPTION		

\*

A

DESIGNED  
DETAILED  
DWG UPDATED

TOLERANCES UNLESS NOTED INCHES DECIMAL X ± .05 .XXXX ± .0005 .XX ± .02 ANGLES ± 1° .XXX ± .005	
BERNSTEIN	04-16-98
DOBKIN	04-16-98
DIRSCHEL	05-12-00

TITLE NAME	DLH640
TITLE	DLH640
DESCRIPTION OR MATERIAL	ASSEMBLY

MODEL OF TOOL	
DWG. SIZE	D
KURT DWG. NO.	D19525
REVISION LEVEL	E
CUSTOMER	DLH640
CUST. PART NO.	DLH640
TOOL NO.	
SCALE	FULL
SHEET	1 OF 4

2

DLH640

SHEET 2 OF 4

*	37	DL640-6	C19398	STATIONARY JAW	1	M
*	36	00-1414	NO DWG	SHCS 1/2-13NC X 3/4 LG	4	P
	35	DL640-248	A19397	STATIONARY CHIP GUARD	1	P/M
	34	DL640-249	B19396	MOVABLE CHIP GUARD	2	P/M
	33	DL600-111	A18984	KURT LOGO TAG	4	P
	32	D60-7	B1339	JAW PLATE	4	M
	31	04-4008	NO DWG	ROLL PIN .062 $\phi$ X 5/16 LG	2	P
*	30	03-0141	NO DWG	BHCS 5/16-18NC X 1/2 LG	2	P
	29	D60-9	B10671	SEGMENT	2	M
*	28	DL640-2	D19395	MOVABLE JAW	2	M
*	27	01-3334	NO DWG	SDC SET SCR, CONE POINT, LONG LOCK, NYLON STRIP ONLY 1/2-13NC X 1" LG	2	P
	26	DLH640-290	A19533	KEY	1	M
	25	DL640-311	A19394	SPRING (PRE-LOAD)	1	M
	24	DL640-225	A19393	FRICTION CLAMP	1	M
*	23	00-1191	NO DWG	SHCS #8-32NC X 3/8 LG	5	P
	22	3600V-128	NO DWG	O-RING 1 9/16 I.D. X 1 3/4 O.D. X 3/32 C.S. 70 DUROMETER	1	P
*	21	3600V-8	C11041	2-PIECE RETAINING NUT	1	M
	20	6THU	B18253	6" THREADED HYD UNIT ASSY	1	M
	19	DLH640-56	C19532	CONNECTOR	1	M
	18	DLH640-291	B19531	KNURLED NUT	1	M
	17	DLH640-212-RM	C19530	HOLDING BLOCK	1	M
	16	DL640-197	NO DWG	LEE COMPRESSION SPRING (SS) #LC-038C-13-S (.240 O.D. X .038 $\phi$ X 1.125 FREE LGTH) RATE 29#	12	P
	15	DLH640-122	A19529	COLLAR (SPLIT)	4	M
	ITEM	PART NO.	DWG. NO.	DESCRIPTION	QTY	PUR/ MFGR

DLH640

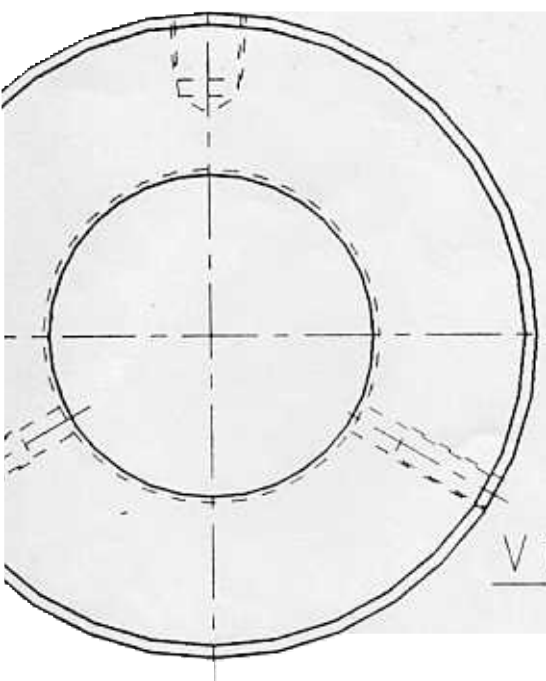
SHEET 3 OF 4

54	00-1419	NO DWG	SHCS 1/2-13NC X 1 1/4 LG	4	P
53	DLH640-232	A20180	SMALLEY MEDIUM DUTY SPIRAL RETAINING RING #WH-162 (1.625 HOUSING DIA)	1	P
52	DLH640-313	A20179	SETUP STICKER	1	P
51	DLH640-68	NO DWG	PRECISION ASSOCIATES O-RING #70-1.775 (BUNA-N) 1.775 I.D. X .070 C.S. (.70 O.D. DIMETER)	2	P
50	SCD600-111	A18776	CLAMP LOCATION STICKER	2	P
49	DL640-231	NO DWG	SMALLEY MEDIUM DUTY SPIRAL RETAINING RING #WH-168 (1.687 HOUSING DIA)	1	P
48	DL640-331	NO DWG	WIPER RING MPT (MACROTECH POLYSEAL, INC) #959-15 (LUBRITHANE) 1.373 ROD DIA X 1.684 O.D. X .104 (URETHANE)	1	P
47	DLH640-217	NO DWG	SMALLEY MEDIUM DUTY SPIRAL RETAINING RING #WH-121 (1.218 HOUSING DIA)	1	P
46	DL640-217	NO DWG	SMALLEY MEDIUM DUTY SPIRAL RETAINING RING #WH-109 (1.093 HOUSING DIA)	1	P
45	DL640-314R	B19403	WISE BODY STICKER (RIGHT REAR)	1	P
* 44	DLH640-314F	B19538	WISE BODY STICKER (RIGHT FRONT)	2	P
43	DL640-313R	B19401	WISE BODY STICKER (LEFT REAR)	1	P
* 42	DLH640-102	A20110	MODEL/SERIAL NUMBER TAG	1	P
* 41	00-1361	NO DWG	SHCS 3/8-16NC X 2 LG	2	P
40	DL640-223	A19509	CAUTION STICKER	1	P
39	DL640-278	A19399	SECONDARY LOCATOR	1	M
38	DLH600-10-SA	B18302	HANDLE ASSEMBLY	1	M
ITEM	PART NO.	DWG. NO.	DESCRIPTION	QTY	PUR/ MFG.

DLH640

SHEET 4 OF 4

A	V0801	RELEASED	12/16/92	SJD
B	V1168	SEE ECO	03/15/95	SJD



VIEW Z-Z

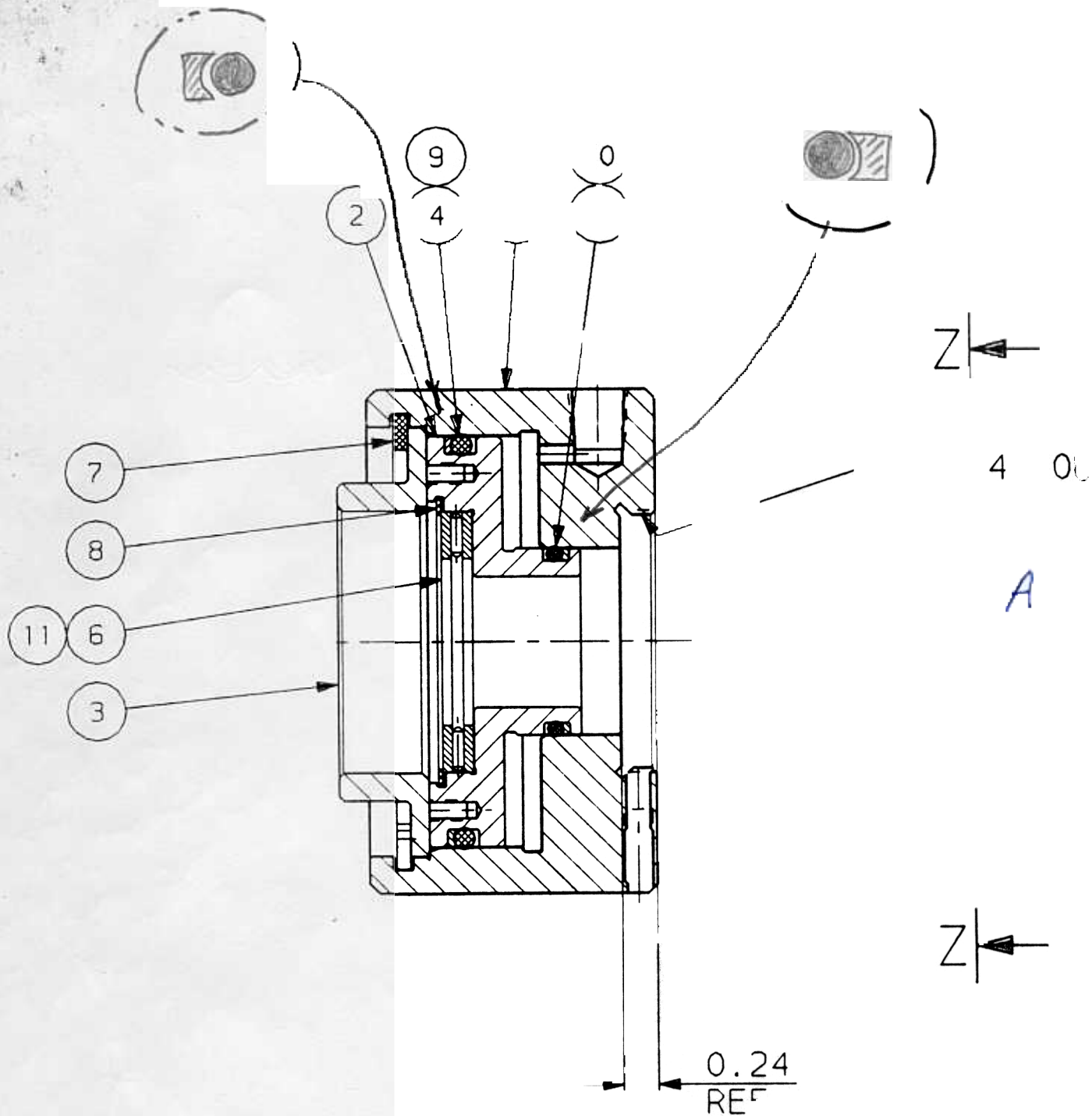
4903 A3T2AM

A)

ITEM	PART NO.	DWG. NO.	DESCRIPTION	QTY.	PUR / MFR
	3600V-42	NA		2	P
0	360HU-187	NA		1	P
9	PTH600-188	NA		1	P
8	360HU-231	N/A		1	P
7	360HU-232	N/A		1	P
6	D80-41	N/A		1	P
5	360HU-98	N/A		1	P
	PTH600-96	N/A		1	P
3	360HU-229	A11063		1	M
	360HU-93	B11062	PISTON	1	
1	6THU-90	C18254	CYLINDER HOUSING	1	M

/ . CC > M . 6THU > 6THU-P

 KURT MANUFACTURING INDIANAPOLIS	TOLERANCES UNLESS NOTED INCHES DECIMAL .X ± .05 .XX ± .02 .XXX ± .005 .XXXX ± .0005 ANGLES ± 1°		TOOL NAME <b>6" THREADED HYDRAULIC UNIT</b>	MODEL OF TOOL	
	TITLE <b>6" THREADED HYDRAULIC UNIT (PURCHASE)</b>		DWG SIZE <b>B</b>	KURT DWG. NO. <b>B18428</b>	
	BERNSTEIN DIRSCHHEL 12/16/92		DESCRIPTION OR MATERIAL <b>ASSEMBLY</b>	REVISION LEVEL <b>B</b>	
				CUSTOMER <b>6THU</b> CUST. PART NO. <b>6THU-P</b>	
			TOOL NO. -	SCALE <b>FULL</b> SHEET <b>1</b> OF <b>1</b>	

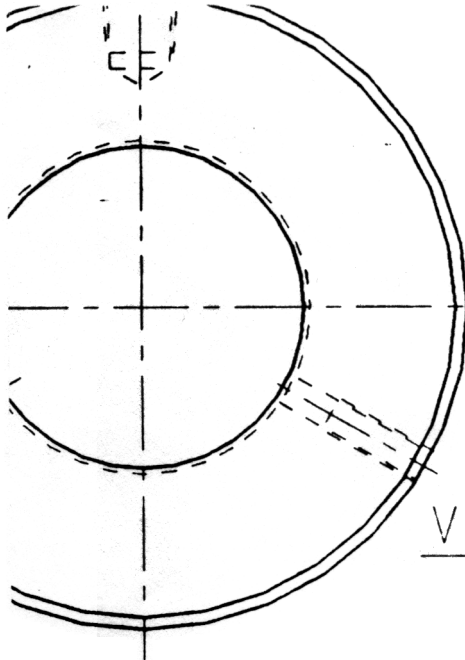


NOTES:

1. STROKE: .25"
2. PISTON AREA: 4.71 in<sup>2</sup>
3. HYDRAULIC DISPLACEMENT
4. CLAMPING PRESSURE @ 3 00 p
4. OPERATING HYDRAULIC PR UR 200 p

2 of 2

7 H J CAL  
 JO A AL  
 N  
 00 p MAX



B	V0661	SEE ECO		SJD
C	V0703	SEE ECO	05/01/92	SJD
D	V1166	SEE ECO	03/15/95	SJD

VIEW Z

B

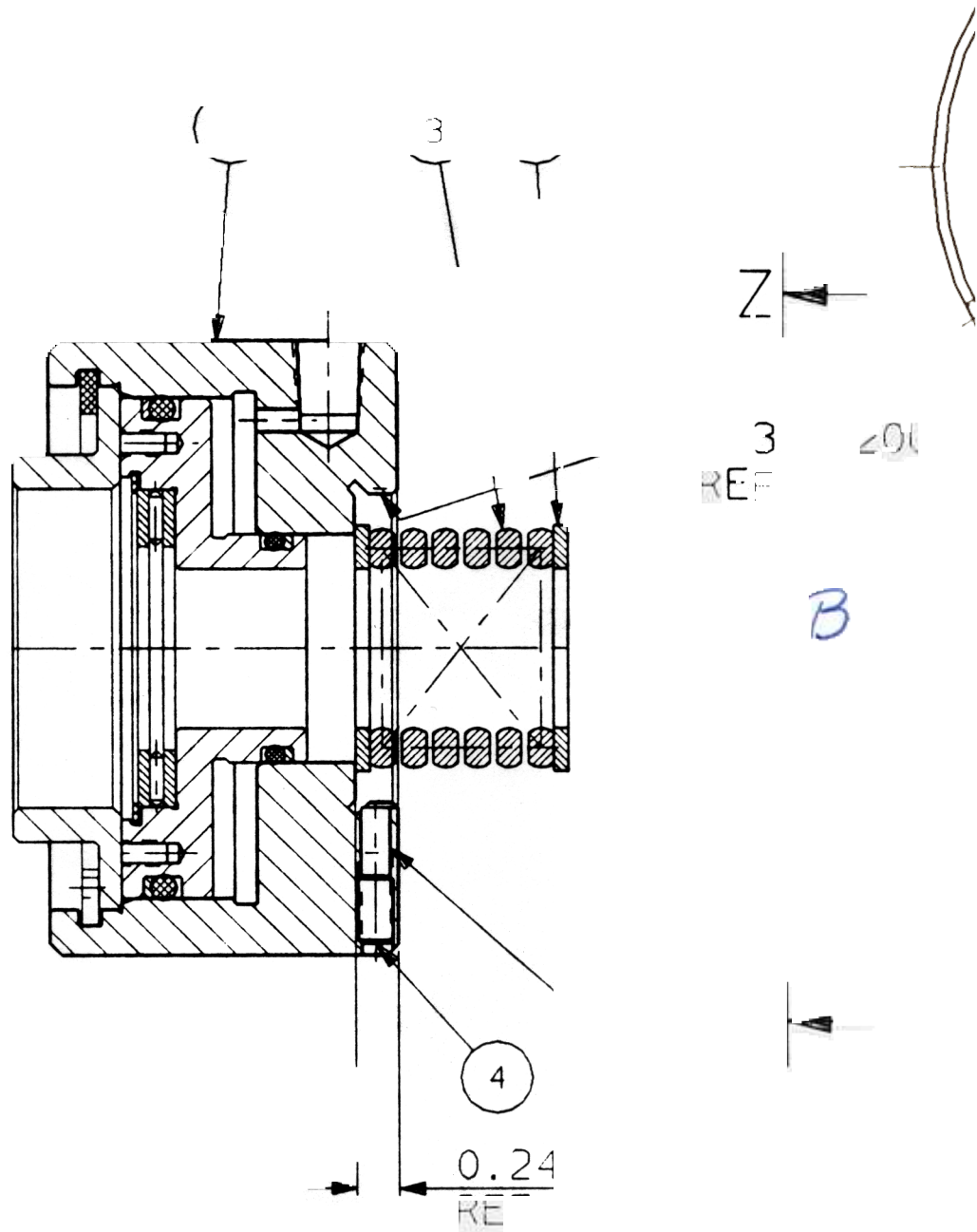
75  
4900 A3TEAM

1 of 2

6THU-102	A18384	MODEL/SERIAL NUMBER STICKER	1	P
6THU-292	A18299	BRASS PLUG	2	M
01-1464	NO DWG	SSC #10-24NC X 3/8 LG FLT PT	2	P
360HU-87	A11066	SPRING, COMPRESSION	1	P/M
360HU-230	A11065	WASHER	2	M
6THU-P	B18428	6" THREADED HYDRAULIC UNIT PURCHASE	1	P
PART NO.	DWG. NO.	DESCRIPTION	QTY.	PUR / MFGR

C>M. 6THU

		TOOL NAME 6" THREADED HYDRAULIC UNIT		MODEL OF TOOL -	
TOLERANCES UNLESS NOTED INCHES DECIMAL .X ± .05 .XX ± .02 .XXX ± .005 .XXXX ± .0005 ANGLES ± 1°		TITLE  6" THREADED HYDRAULIC UNIT		DWG SIZE B	KURT DWG. NO. B18253
BERNSTEIN DIRSCHL 12/05/91				REVISION LEVEL D	
		DESCRIPTION OR MATERIAL ASSEMBLY		CUSTOMER 6THU	
				CUST. PART NO. 6THU	
				TOOL NO. -	SCALE FULL
					SHEET 1 OF 1



NOTES

- 1 S R U K E 25
- 2 P S U N A R E A 4 n
- 3 H Y D R A U L I C D I S P L A C M E N T 1 8  
 C L A M P I N G P R E S S U R E @ 3 2 0 0 p s i 5 0 0 H E O R E A L  
 2 5 0 0 A U G A L
- 4 O P E R A T I N G H Y D R A U L I C P R E S S U R E 2 0 0 p s i 2 0 0 p s A

2 of 2