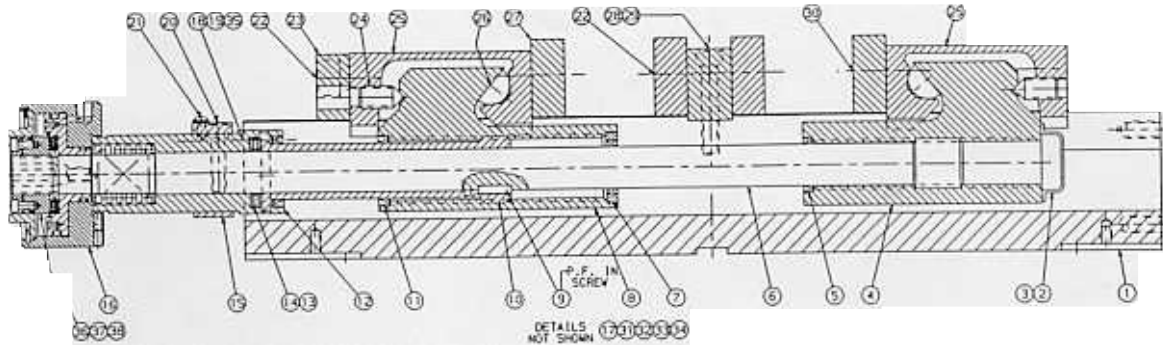


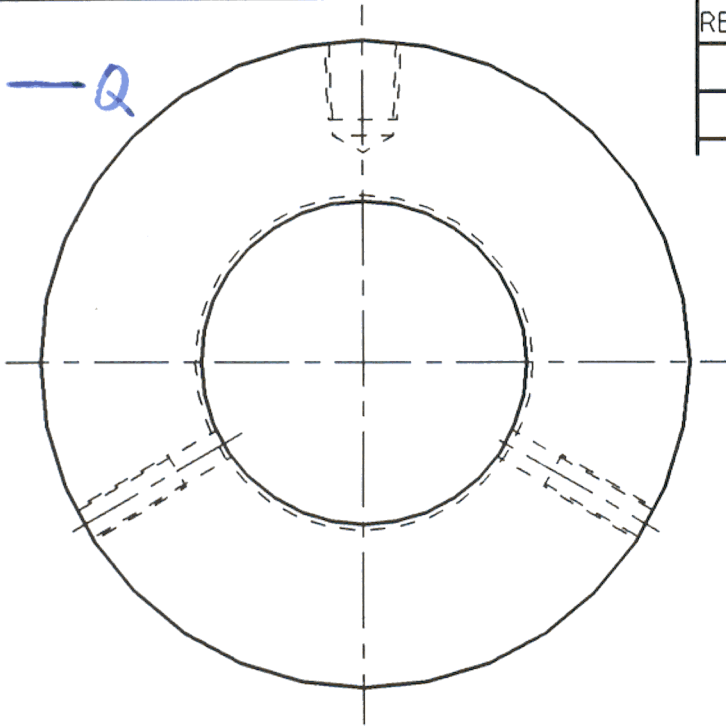
DLH800™ REPLACEMENT PARTS



ITEM	QTY	DESCRIPTION	PART NUMBER
1	1	BODY	DL800-1
2	1	END CAP	DL600-218
3	4	U-TYP.DRIVE SCREW #2 X 1/4 LG	07-0230
4	1	REAR NUT	DL800-3R
5	2	U-CUP SEAL	DL600-146
6	1	SCREW	DLH800-5
7	1	SPACER	DLH600-61
8	1	FRONT NUT	DL800-3F
9	1	KEY	DLH600-290
10	1	SLEEVE THREADED	DLH800-209
11	2	U-CUP SEAL	DL600-180
12	1	CONNECTOR	DLH800-56
13	2	THRUST WASHER	D60-42
14	1	THRUST BEARING	D60-41
15	1	HOLDING BLOCK	DLH800-212
16	1	6.5 THREADED HYD UNIT (ASSY)	DLH800-102 6.5 THU
17	1	SERIAL TAG	DLH800-102
18	2	SHLD. SCR 1/2 X 1" LG	DL600-176A
19	2	COMPRESSION SPRINGS	DL600-197
20	1	SHCS 5/16 - 18 X 1-1/2 LG.	00-1328
21	2	BHCS #10-24 X 3/8 LG	03-0124
22	8	SHCS 5/8-11NC X 1-1/4 LG	00-1481
23	1	RETAINING PLATE	DL800-227
24	2	SHSS HALF DOG 5/8-11NC X 1-1/4 LG	01-3953
25	2	MOVABLE JAW	DL800-2
26	2	SEGMENT	D80-9
27	4	JAW PLATE	D80-7
28	2	SHCS 1/2-13NC X 2-1/4 LG	00-1424
29	1	STATIONARY JAW	DL800-6
30	2	SHCS 5/8-11NC X 1" LG	00-1479
31	1	T-HANDLE 1/4 HEX	DL600-219
32	1	HANDLE ASSEMBLY	DLH600-10-SA
33	2	CHIP GUARD SHORT	D80XL-248
34	1	CHIP GUARD LONG	D80XL-249
35	2	SPRING BUSHING	DL600-213B

To Convert a DL800 to a DLH800

Parts Labor \$2100 - Estimate
 250
 71 Total 2350



REV.	ECO	DESCRIPTION	DATE	BY
A	V0987	RELEASED	02/07/94	SJC
B	V1170	SEE ECO	03/22/95	SJC

VIEW Z-Z

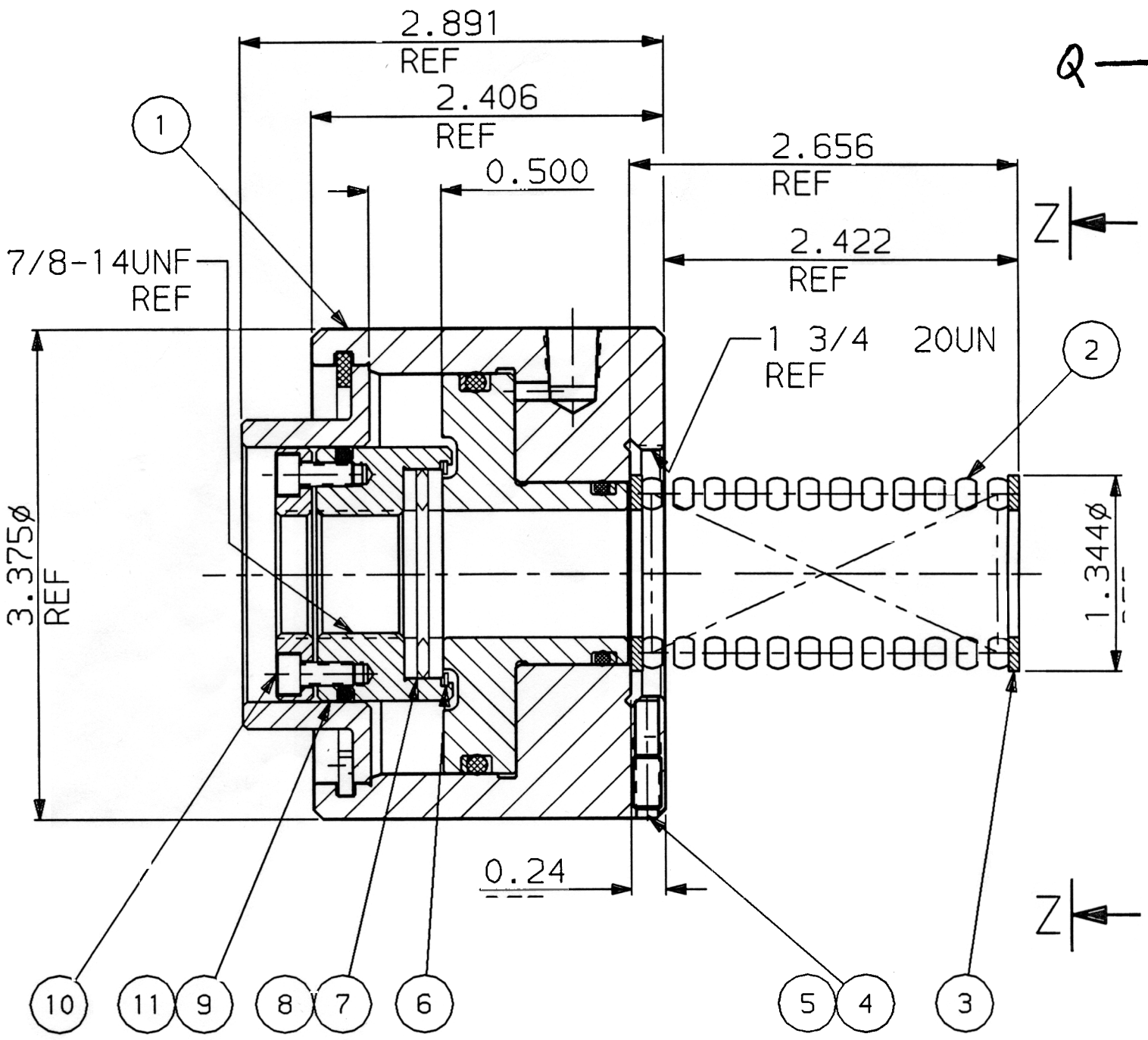
V0987

12	6.5THU-102	A18645	MODEL/SERIAL NUMBER STICKER	1	P
11	3600V-128	NO DWG	O-RING 1 9/16 I.D. X 1 3/4 O.D. X 3/32 C.S. 70 DUROMETER	1	
10	00-1191	NO DWG	SHCS #8-32NC X 3/8 LG	4	
	6.5THU-8	C18635	2-PIECE RETAINING NUT	1	
	D50-41	NO DWG	THRUST BEARING TORRINGTON #NTA-1423	1	
	D50-42	NO DWG	THRUST WASHER TORRINGTON #TRC-1423	2	
	6.5THU-231	NO DWG	RETAINING RING "SMALLEY" LIGHT DUTY #VH150, 1.559 O.D. X .088 RAD WALL X .025 THICK	1	
	6THU-292	A18299	BRASS PLUG	2	
	01-1464	NO DWG	SSC #10-24NC X 3/8 LG FLT PT	2	
	360HU-230	A11065	WASHER	2	
	6.5THU-87	B18634	COMPRESSION SPRING	1	
	6.5THU-P	B18633	6.5" THREADED HYDRAULIC UNIT PURCHASE	1	

ITEM	PART NO.	DWG. NO.	DESCRIPTION	QTY.	PUR MFG
------	----------	----------	-------------	------	---------

V. CC/M. 6.5THU

<p>KURT MANUFACTURING COMPANY MINNEAPOLIS</p>	<p>TOLERANCES UNLESS NOTED INCHES DECIMAL .X ± .05 .XX ± .02 .XXX ± .005 .XXXX ± .0005 ANGLES ± 1°</p>		<p>TOOL NAME 6.5 THREADED HYDRAULIC UNIT</p>		<p>MODEL OF TOOL</p>	
	<p>DESIGNED BERNSTEIN</p>		<p>TITLE 6.5 THREADED HYDRAULIC UNIT (.500 STROKE)</p>		<p>DWG SIZE B</p>	
	<p>DETAILED DIRSCHL 02/07/94</p>				<p>KURT DWG. NO. B18632</p>	
	<p>CHECKED APPROVED</p>		<p>DESCRIPTION OR MATERIAL ASSEMBLY</p>		<p>REVISION LEVEL B</p>	
				<p>TOOL NO. -</p>		<p>SCALE FUL</p>



(12) NOT SHOWN

NOTES:

- 1. STROKE: .50"
- 2. PISTON AREA: 4.71 in².
- 3. HYDRAULIC DISPLACMENT: 2.36 n³
- 4. CLAMPING PRESSURE @ 3,200 ps 15,070 THEORETICAL.
 12,600 ACTUAL.
- 4. OPERATING HYDRAULIC PRESSURE: 200 psi MIN.
 3,200 psi MAX.

Q