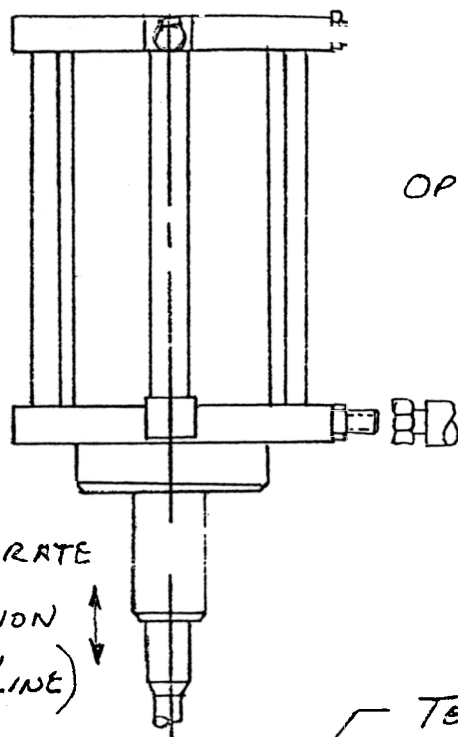
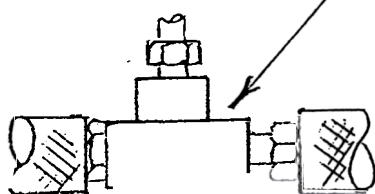
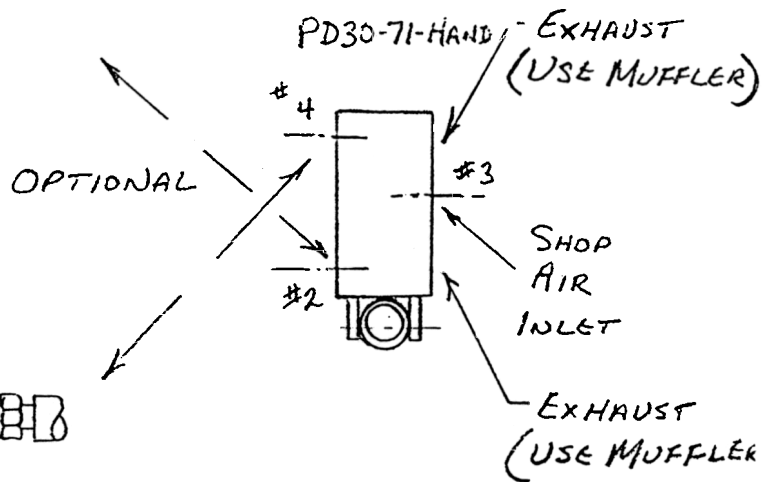


APD50-112
OR
APD60-112



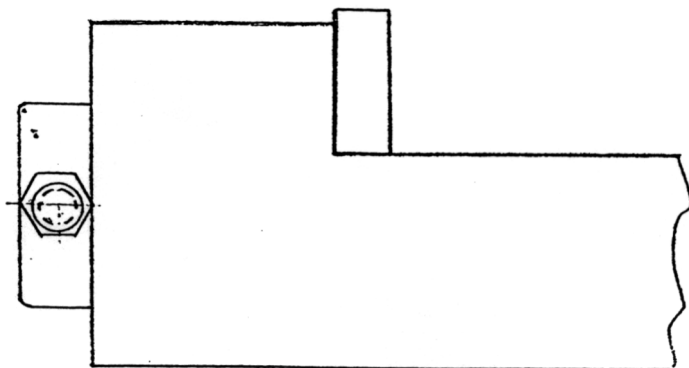
FOR BEST RESULTS IN BLEEDING LINES OPERATE DUMP IN THIS POSITION (WITH NO LOOPS IN LINE)



TEE REQ'D TO OPERATE (2) VISES

To VISE

Vise

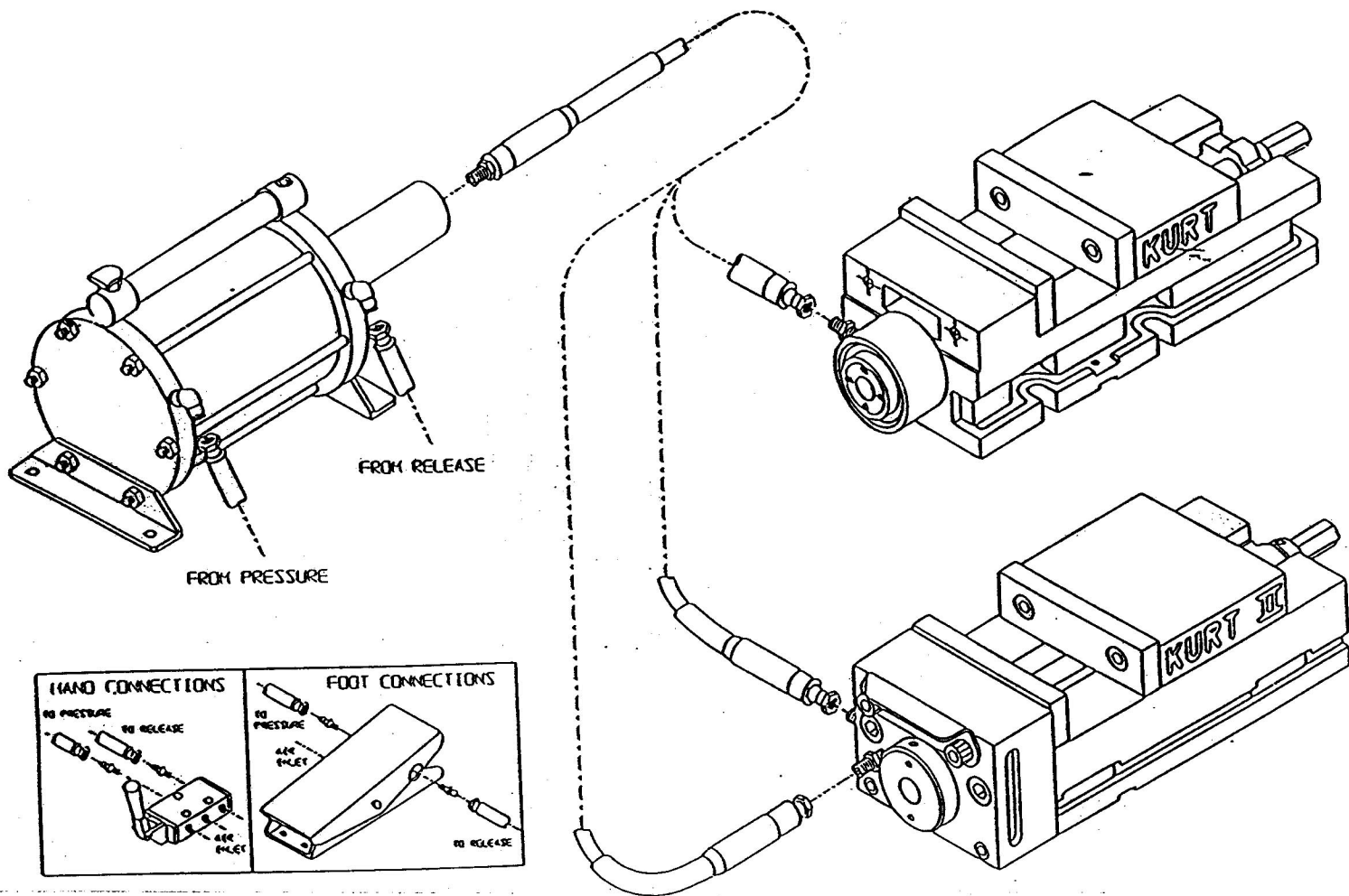


Instructions:

After the unit is assembled and hooked up to hydraulic vise, fill oil cup. Place the part in the vise against the stationary jaw. Hand crank the movable jaw between 1/8 to 1/4 of an inch from part. The next step is to get the air out of the hydraulic line. Move hydraulic lever back and forth. Wait a few seconds and do it again you will see air bubbles showing up in oil cup and oil in cup disappear. Fill oil cup and repeat process until there are no air bubbles showing up in the oil cup. If air is still in the hydraulic line under pressure (crack) loose the fitting down by the vise and then tighten.

REFERENCE --- SUGGEST USING FILTER, REGULATOR & LUBRICATOR FOR CLEAN SHOP AIR.

DO NOT OPERATE MORE THEN (2) VISES, NOT ENOUGH OIL CAPACITY TO PRODUCE FULL LOAD CAPIBILITIES TO MORE THAN (2) VISES. (KEEP) FULL OF OIL & DO NOT USE FULL 1/4" OF STROKE.



SET-UP INSTRUCTIONS FOR PTH & VERSATILE VISE

1. Remove plastic caps from pressure and release ports on Accumulator and install 90° fittings.
2. Remove plastic caps from pressure and release ports on hand or foot valve, install straight fitting.
3. Install straight fitting to preferred port on vise (end or side on PTH VISE, HYD UNIT on VERSATILE VISE) make sure unused port plug on the PTH is tight.
4. Connect air hose from Accumulator pressure to pressure port of hand or foot valve.
5. Connect air hose from Accumulator release to release port of hand or foot valve.
6. Connect high pressure hydraulic hose (shiny black hose) to nose of Accumulator and to fitting in end of vise, (PTH VISE) or in HYD. UNIT in the VERSATILE VISE.
7. PTH600 and PTH800, remove plastic caps from top of accumulator and install oil reservoir. Note: PTH400 and the VERSATILE VISE ACCUMULATOR RESERVOIR is an integral part of Accumulator.
8. Add hydraulic oil to reservoir. (8 oz. bottle supplied.)
9. Plumb shop air to inlet port of hand or foot valve.
10. A Filter-Lubricator-Regulator combination is recommended to insure clean air coming into the unit. See Clamping Force Chart for air pressure required to attain desired clamping force.
11. Apply air pressure to system, loosen swivel fitting at vise and bleed air. Tighten fitting. Release air pressure.
12. Repeat previous step until all air is purged. Note: Add oil to reservoir as needed.
13. Note: Mount Accumulator at same level or higher than vise.
14. System is now ready for use.

KURT

MANUFACTURING COMPANY
INDUSTRIAL PRODUCTS DIVISION
1325 Quincy Street N.E.
Minneapolis, MN 55413-1540
Bus. 612-572-4424
Fax. 612-623-3902
Watts 800-328-2565

