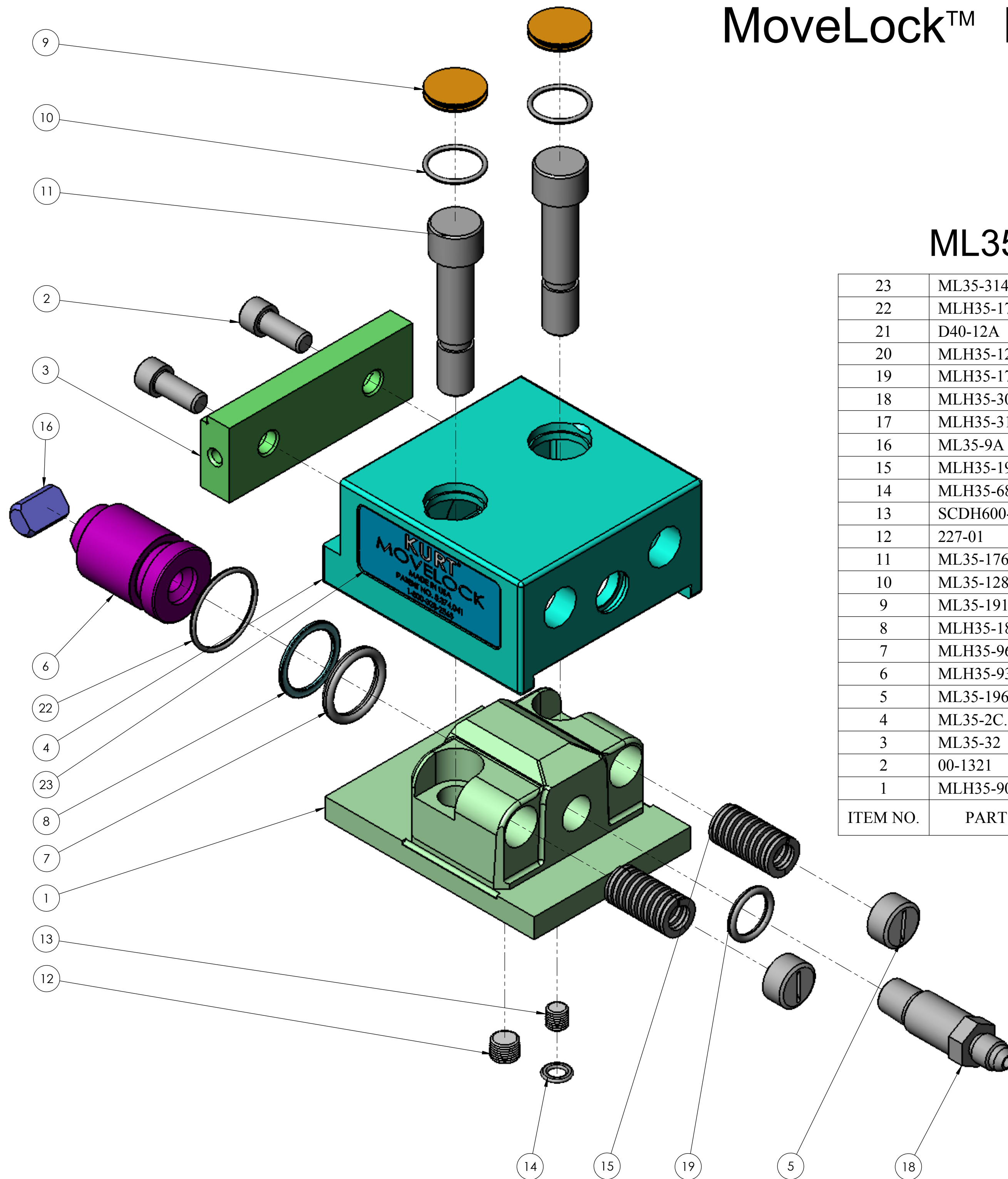


# MoveLock™ Modular System



## ML35H - Hydraulic Movable Jaw

23	ML35-314	STICKER (RIGHT)	1
22	MLH35-174	O-RING #24 70 DUROMETER	1
21	D40-12A	PLASTIC CAP	1
20	MLH35-12	END CAP (NOT SHOWN, USE FOR PACKING)	1
19	MLH35-173A	O-RING #114 70 DUROMETER	1
18	MLH35-309	ADAPTER 1/4-18NPT X 7/16-20 37° FLARE	1
17	MLH35-313	STICKER (LEFT)	1
16	ML35-9A	SEGMENT	1
15	MLH35-197	DIE SPRING 11/32 ID X 5/8 OD 13.5LBS/1/8" RATE	2
14	MLH35-68	O-RING #11 70 DUROMETER	1
13	SCDH600-292	1/16-27NPT PLUG	1
12	227-01	1/8-27NPT PLUG	1
11	ML35-176	LOCATING BOLT $\phi$ 1/2 X 2 1/4LG	2
10	ML35-128	O-RING #18 70 DUROMETER	2
9	ML35-191A	PLUG (PROTECTIVE CAP)	2
8	MLH35-188	8-212 PARBAK	1
7	MLH35-96	O-RING #212 70 DUROMETER	1
6	MLH35-93	PISTON	1
5	ML35-196	SPRING RETAINING SCREW	2
4	ML35-2C.1	MOVABLE JAW	1
3	ML35-32	STEPPED JAW PLATE	1
2	00-1321	SHCS 5/16-18NC X 3/4 LG	2
1	MLH35-90B	CYLINDER HOUSING (HYDRAULIC)	1
ITEM NO.	PART NO.	DESCRIPTION	QTY