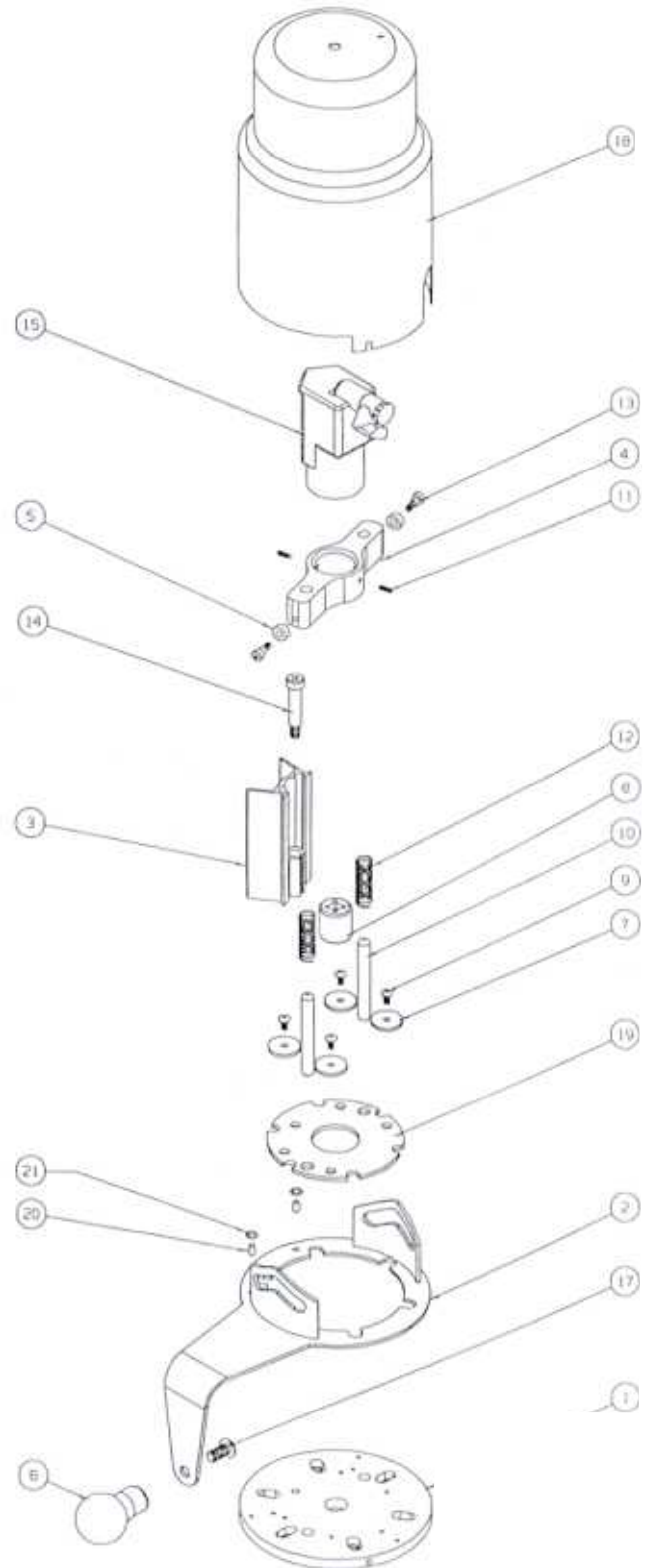
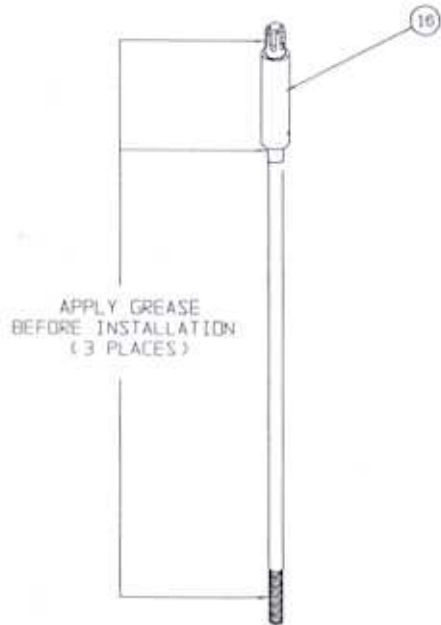


MECHANICAL MODEL

NEW STYLE

21	225-01	O-RING, 3/16 ID X 5/16 OD	2
20	04-4242	PIN, ROLL, 3/16 DIA X 3/8	2
19	700-32	PIVOT PLATE, UNIVERSAL	1
18	700-08-SA	COVER	1
17	03-0150	BHCS 3/8-16 X 3/4 LG.	1
16	* 600-XX	DRAWBAR ROD	1
15	212-6000	CP-722 IMPACT WRENCH, MECH	1
14	03-2025	SCREW, SHLDR 3/8 1-1/2	1
13	03-2000	SCREW, SHLDR 1/4 X 1/4	2
12	700-15	SPRING COMPRESSION	2
11	01-0264	SCREW SHSS #10-32 X 1/2 LG.	2
10	04-0077	PIN, DOWEL 3/8 DIA X 3.0	2
9	03-0125	BHCS #10-24 X 1/2 LG.	4
8	208-00	SOCKET DRAWBAR	1
7	700-07	WASHER, HOLDING, BRASS	4
6	700-06	KNOB, MECHANICAL DRAWBAR	1
5	700-05	ROLLER, GUIDE	2
4	700-04-a	SLIDE	1
3	700-003	TRIP LEVER	1
2	* 700-02	PIVOT PLATE ASSEMBLY	1
1	700-31	BASE ASSEMBLY, UNIVERSAL	1
PART NO.		DESCRIPTION	QTY

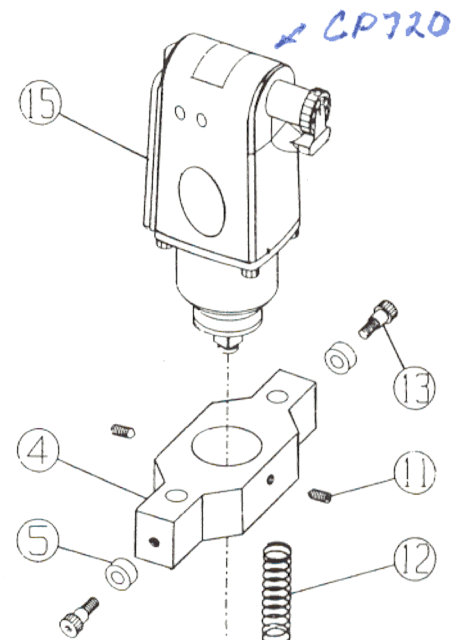
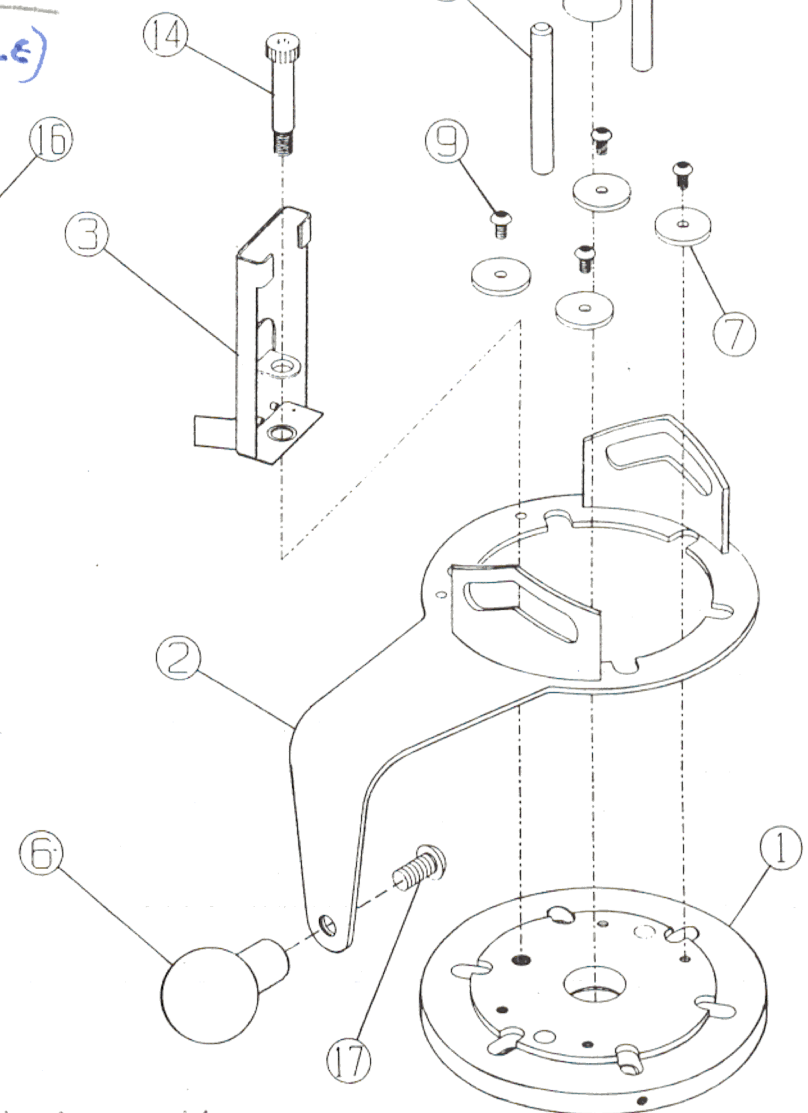
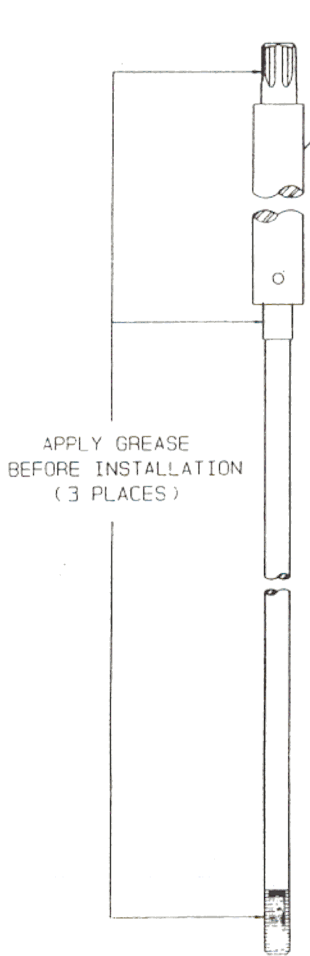
- * PART NUMBER VARY DEPENDING ON MODEL NUMBERS.
- * ITEM 2 CHANGES TO 701-02 FOR LONG HANDLE.



ITEM	PART NO.	DESCRIPTION	QTY.
1	* 700-XX	BASE	1
2	700-02	PIVOT PLATE ASSEMBLY	1
3	700-03	TRIP LEVER ASSEMBLY	1
4	700-04	SLIDE	1
5	700-05	GUIDE ROLLER	2
6	700-06	KNOB	1
7	700-07	HOLDING WASHER, BRASS	4
8	208-00	SOCKET	1
9	03-0124	BUTTON HEAD #10-24 X 3/8	4
10	04-0077	DOWEL PIN, 3/8 DIA. X 3"	2
11	01-0264	SHSS, #10-32 X 1/2 (CONE)	2
12	700-15	SPRING	2
13	03-2000	SHOULDER SCREW, 1/4 X 1/4	2
14	03-2025	SHOULDER SCREW, 3/8 X 1-1/2	1
15	AP136SX	IMPACT WRENCH	1
16	* 600-XX	DRAWBAR ROD	1
17	03-0150	BUTTON HEAD, 3/8 -16 X 3/4	1
18	700-08-SA	COVER (NOT SHOWN)	1

* PART NUMBERS VARY DEPENDING ON MODEL NUMBERS.
SEE PARTS BREAKDOWN (PAGE 2) FOR THE CORRECT
PART NUMBER FOR YOUR MODEL.

MECHANICAL MODEL
(OLDER STYLE)



Some parts still available

(OLD STYLE)