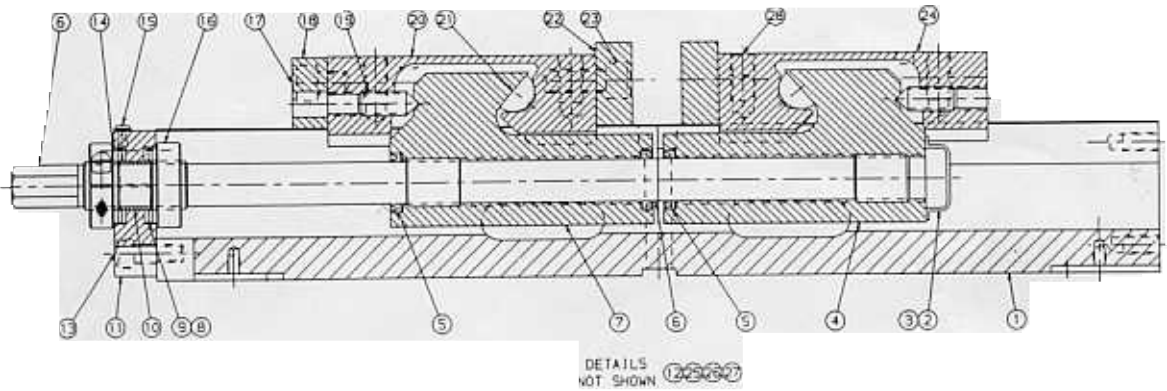
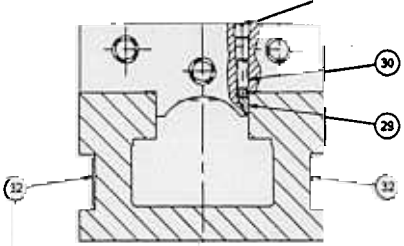


SCD400™ REPLACEMENT PARTS



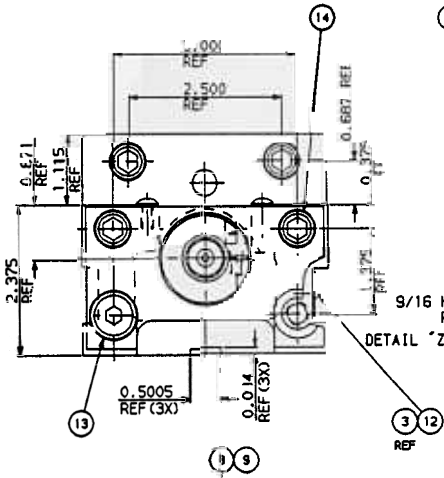
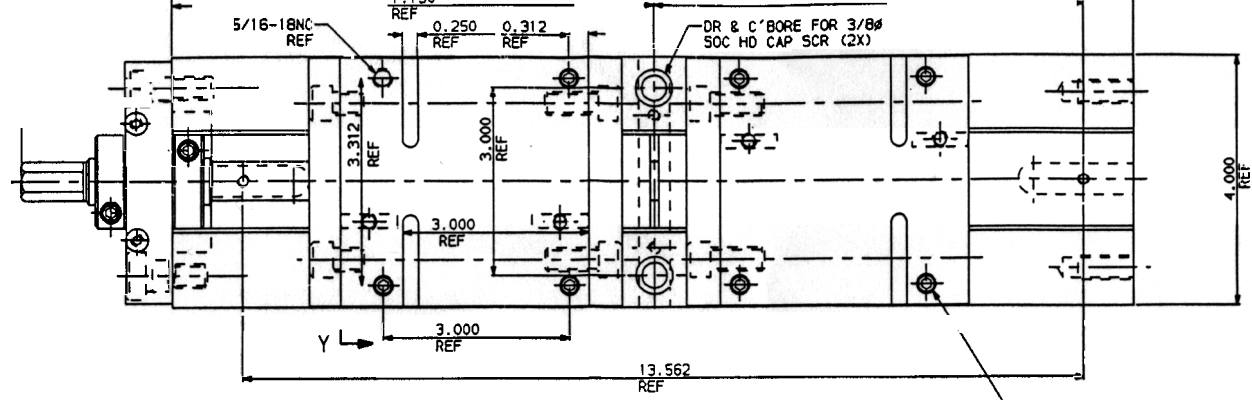
ITEM	QTY	DESCRIPTION	PART NUMBER	PRICE
1	1	BODY	SCD400-1	
2	1	END CAP	DL400-218	
3	4	U-TYP DRIVE SCREW #2 X 1/4	07-0230	ea.
4	1	REAR NUT	SCD400-3R	
5	3	U-CUP SEAL	DL400-146	ea.
6	1	SCREW	SCD400-5	
7	1	FRONT NUT	SCD400-3F	
8	4	THRUST WASHER	DL400-42A	ea.
9	2	THRUST BEARING	D40-41	ea.
10	1	BOSTON BEAR-N-BRONZE	SCD400-60	
11	1	HOLDING BLOCK	SCD400-212	
12	1	SERIAL TAG	SCD400-102	
13	2	SHLD SCREW 1/2 DIA X 3/8 LG	03-2035	ea.
14	2	SHCS 3/8-16 X 1" LG	03-1355	ea.
15	2	BHCS #10-24 X 3/8 LG	03-0124	ea.
16	2	THREADED SHAFT COLLAR	SCD400-8	ea.
17	2	SHCS 3/8-16 X 1/2 LG	00-1348	ea.
18	1	RETAINING PLATE	DL400-227	
19	2	SHSS - CONE PT 3/8-16 X 7/8 LG	01-3308	ea.
20	1	MOVABLE JAW (SPECIAL)	SCD400-2S	
21	2	SEGMENT	D40-9	ea.
22	2	JAW PLATE	D40-7	ea.
23	4	SHCS 3/8-16 X 7/8 LG	00-1353	ea.
24	1	MOVABLE JAW	SCD400-2	
25	1	HANDLE ASS'Y	D40-10-5A	
26	1	CHIP GUARD (SHORT)	DL400-248	
	1	CHIP GUARD (LONG)	DL400-249	1.50



LOCATE AT C OF HOLD DOWN HOLES (BOTH SIDES)

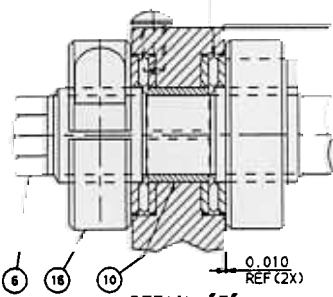
SECTION Y-Y

SCREW AND NUT NOT SHOWN ROTATED 90° C'CLKWISE

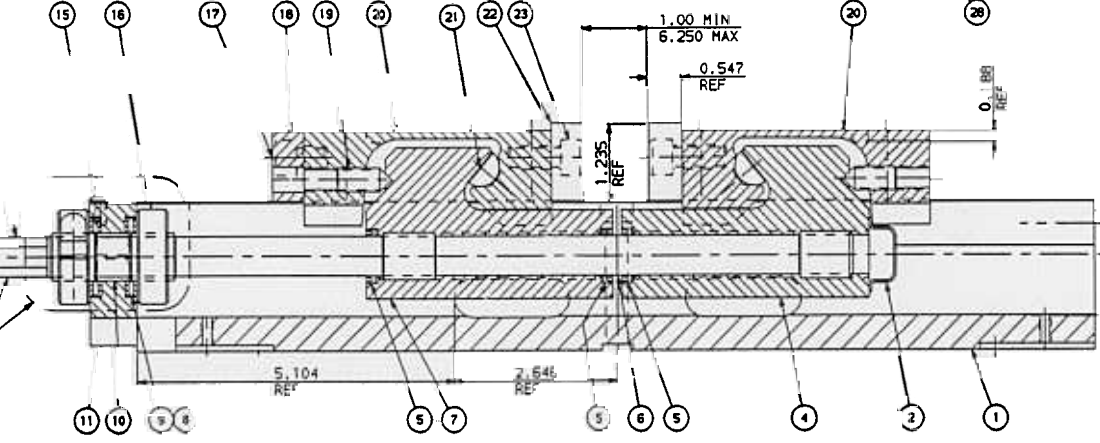


9/16 HEX REF

DETAIL "Z"



DETAIL "Z"
SCALE: 2/1



DETAILS NOT SHOWN



NOTES:

- 1) CLAMPING RANGE, 1.00 MIN TO 6.25 MAX.
- 2) FOR FIXTURE KEYS SEE DWG B18092 & DWG C18497.

* THESE ITEMS CHANGE FOR METRIC VISE

ITEM	PART NO.	DWG. NO.	DESCRIPTION	QTY.	UNIT
32	SC0600-111	A18776	CLAMP LOCATION STICKER	2	P
31	01-6573	NO DWG	SCOTTED SET SCR 1/4-20NC X 1/4 LG	4	P
30	SC0400-196	A18059	SOC SET SCR #10-32NC X 5/8 LG	4	P/M
29	SC0400-13	B18058	G/B	4	M
28	01-1089	NO DWG	SOC SET SCR 5/16-18NC X 5/16 LG	8	P
27	DL400-249	NO DWG	REAR NUT	1	P
26	DL400-248	NO DWG	REAR NUT	1	P
25	040-10-3A	C10231	HANDLE ASSEMBLY	1	P
24	-	-	NOT USED	-	-
23	00-1363	NO DWG	SHCS 3/8-16NC X 7/8 LG	4	P
22	040-7	B3248	JAW PLATE	2	M
21	040-9	B10671	SCHEMANT	2	M
20	SC0400-25	D18507	MOVABLE JAW (SPECIAL)	2	M
19	01-3306	NO DWG	REAR NUT	2	P
18	DL400-227	B18144	RETAINING PLATE	1	M
17	00-1348	NO DWG	SHCS 3/8-16NC X 1/2 LG	2	P
16	SC0400-8	A18506	MOVABLE JAW (STANDARD)	2	P
15	03-0124	NO DWG	SHCS #10-24NC X 3/8 LG	2	P
14	00-1355	NO DWG	SHCS 3/8-16NC X 1/2 LG	2	P
13	03-2030	NO DWG	SOC HD SHLD SCR 1/2" X 3/8 LG	2	P

12	SC0400-102	A18505	HOLDING BLOCK
11	SC0400-212	C18504	HOLDING BLOCK
10	SC0400-60	A18503	HOLDING BLOCK
9	040-41	NO DWG	REAR NUT
8	DL400-42A	NO DWG	FRONT NUT
7	SC0400-3F	C18502	FRONT NUT
6	SC0400-5	C18501	SCREW
5	DL400-146	NO DWG	REAR NUT
4	SC0400-3C	C18500	REAR NUT
3	07-0230	NO DWG	U-TYP DRIVE SCREW #2 X 1/2
2	DL400-21B	B10587	END CAP
1	SC0400-1	D18439	MACHINED BODY

ITEM	PART NO.	DWG. NO.	DESCRIPTION
V. CC/M. SC0400			
SELF CENTERING 4" VISE			
SELF CENTERING 4" VISE			
BERNSTEIN DIR/SCHL. 07/23/97			
ASSEMBLY			