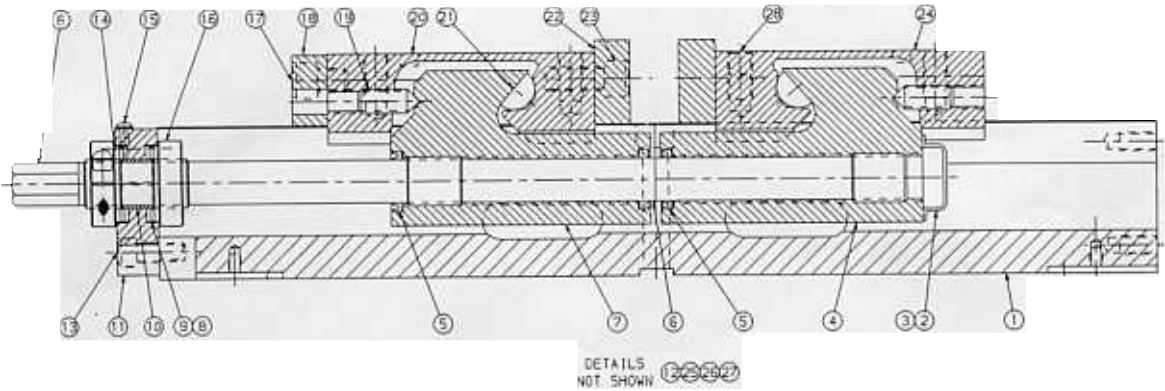


SCD600™ REPLACEMENT PARTS



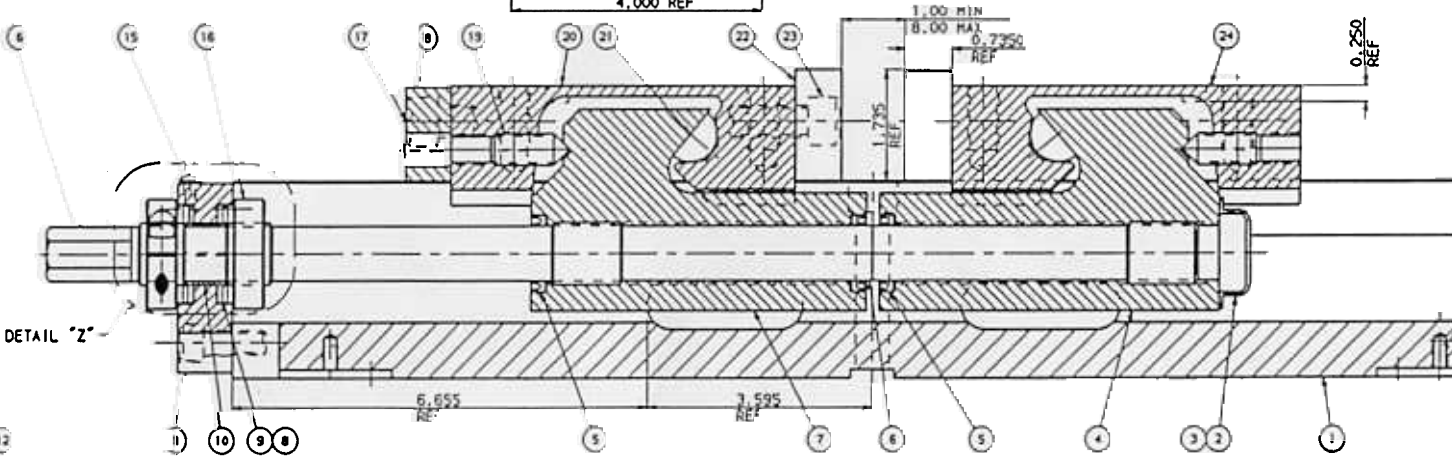
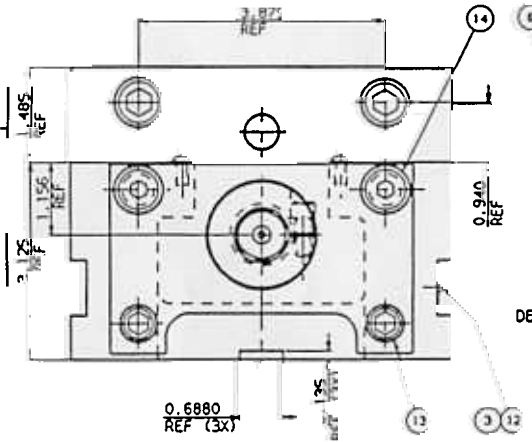
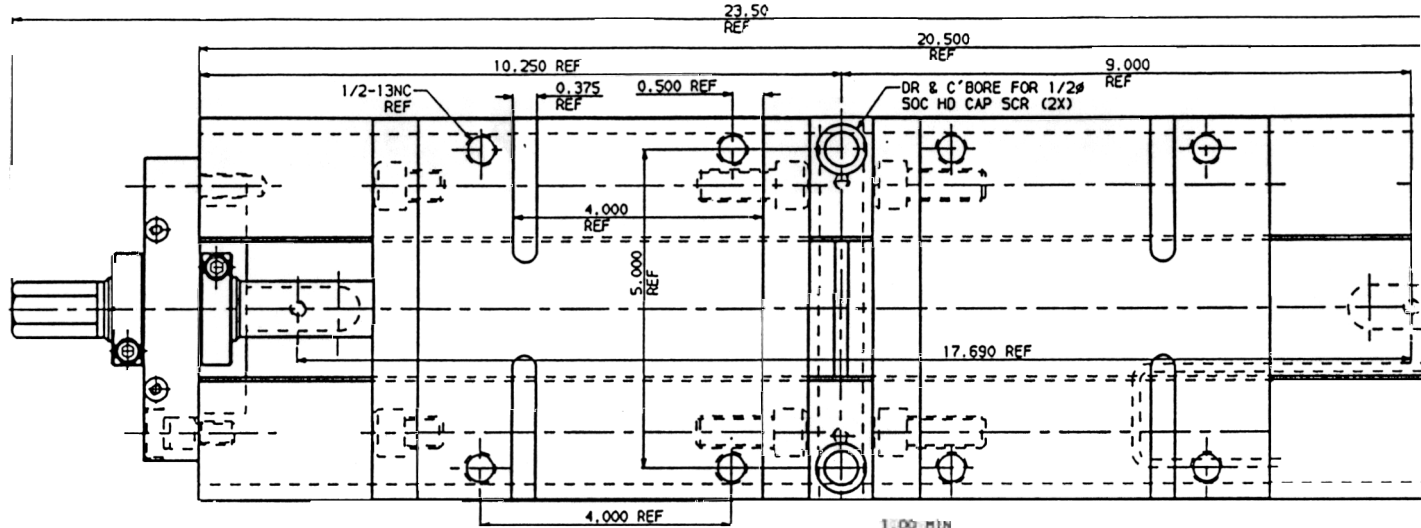
ITEM	QTY	DESCRIPTION	PART NUMBER	PRICE
1	1	BODY	SCD600-1	540.00
2	1	END CAP	DL600-218	2.00
3	4	U-TYP DRIVE SCREW #2 X 1/4 LG	07-0230	2.00
4	1	REAR NUT	SCD600-3R	5.00
5	3	U-CUP SEAL	SCD600-146	13.00
6	1	SCREW	SCD600-5	2.00
7	1	FRONT NUT	SCD600-3F	6.00
8	4	THRUST WASHER	D60-42	2.00
9	2	THRUST BEARING	D60-41	450.00
10	1	BOSTON BEAR-N-BRONZE	SCD600-60	90.00
11	1	HOLDING BLOCK	SCD600-212	100.00
12	1	SERIAL TAG	SCD600-102	5.00
13	2	SHCS 3/8-16 X 1" LG	00-1355	20.00
14	2	SHLD SCREW 1/2 DIA X 1/2 LG	03-2036	10.00
15	2	BHCS 10-24 X 3/8 LG	03-0124	25.00
16	2	THREADED SHAFT COLLAR	SCD600-8	10.00
17	2	SHCS 1/2-13 X 5/8 LG	00-1412	11.00
18	1	RETAINING PLATE	DL600-227	6.00
19	2	SHSS - CONE PT 1/2-13 X 1-1/4	01-3335	1.50
20	1	MOVABLE JAW (SPECIAL)	SCD600-2S	1.00
21	2	SEGMENT	D60-9	50.00
22	2	JAW PLATE	D60-7	50.00
23	4	SHCS 1/2-13 X 1-1/4	00-1419	1.00
24	1	MOVABLE JAW	SCD600-2	1.00
25	1	HANDLE ASS'Y	D60-10-5A	1.00
26	1	CHIP GUARD (SHORT)	DL600-248	1.00
27	1	CHIP GUARD (LONG)	DL600-249	1.00

REV	ECO
1	10/876

SCD600

NOTES:

- 1) CLAMPING RANGE: 1.00 MIN TO 8.00 MAX
- 2) FOR FIXTURE KEYS SEE DWG B18092 & DWG C18497.



FOR INFORMATIONAL USE ONLY