



# KURT® PINLOCK™

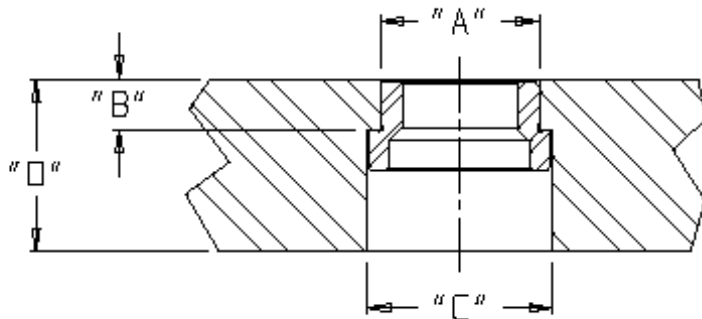
## Mounting System Installation Instructions

### BACK MOUNT RECIEVER BUSHINGS

- Drill hole through approximately 0.030" under bore diameter
- Counterbore "C", maintaining "B" depth
- Finish bore not to exceed 0.0005" smaller than actual O.D.
- Press receiver bushing into the counterbored hole

NOTE: Installed bushings should be approximately 0.012" below the subplate surface

Part#	Shank Diameter (mm)	Actual O.D. +0.0000 -0.0004 A	Counter Bore ±0.006 C	Depth +0.000 -0.002 B	Minimum Sub-Plate Thickness D
PL20RBF	20	1.0950	1.280	0.345	0.875
PL25RBF	25	1.3763	1.593	0.416	1.000
PL30RBF	30	1.6264	1.906	0.432	1.250
PL35RBF	35	1.8764	2.155	0.493	1.312
PL50RBF	50	2.6269	2.988	0.621	1.750



www.kurtworkholding.com  
Phone: 763.574.8309  
Toll Free: 877.226.7823  
Fax: 763.574.8313



# KURT® PINLOCK™

## Mounting System Installation Instructions

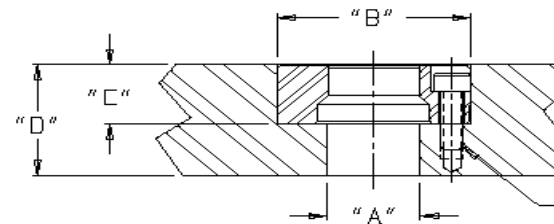
### FACE MOUNT RECIEVER BUSHINGS

- Drill hole ("A" Diameter)
- Counterbore, approximately 0.030" under bore diameter, maintaining "C" depth
- Finish bore hole to "B" & "C" dimensions
- Drill and tap for mounting screws
- Install receiver bushing; tap lightly into hole
- Install mounting screws

NOTE: Installed bushings should be approximately 0.012" below the subplate surface

Part#	Actual O.D. +0.0000 -0.0004	Shank Dia. (mm)	Clear Drill Dia A	Bore +0.0005 -0.0000 B	Depth +0.002 -0.000 C	Min Sub Plate Thickness D	Tap Size & Depth E	Bolt Circle Dia*	Mounting Screw Torque (in. lbs)
PL20RBF	1.6873	20	.812	1.6873	0.637	1.125	10-32X1/2	1.362	55
PL25RBF	2.0623	25	1.000	2.0623	0.799	1.250	1/4-28X1/2	1.644	200
PL30RBF	2.2654	30	1.187	2.2654	0.871	1.375	1/4-28X3/4	1.876	200
PL35RBF	2.6873	35	1.562	2.6873	0.904	1.500	5/16-24X7/8	2.178	400
PL50RBF	3.4998	50	2.156	3.4998	1.239	2.000	3/824X1	2.916	700

\* = 3 places equally spaced



"E" - TAP 3 HOLES EQUALLY SPACED ON BOLT CIRCLE DIA.

Kurt Manufacturing  
9445 East River Road NW  
Minneapolis, MN 55433





# KURT® PINLOCK™

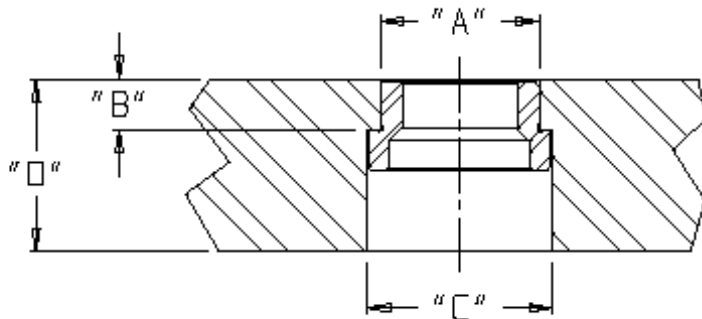
## Mounting System Installation Instructions

### BACK MOUNT RECIEVER BUSHINGS

- Drill hole through approximately 0.030" under bore diameter
- Counterbore "C", maintaining "B" depth
- Finish bore not to exceed 0.0005" smaller than actual O.D.
- Press receiver bushing into the counterbored hole

NOTE: Installed bushings should be approximately 0.012" below the subplate surface

Part#	Shank Diameter (mm)	Actual O.D. +0.0000 -0.0004 A	Counter Bore ±0.006 C	Depth +0.000 -0.002 B	Minimum Sub-Plate Thickness D
PL20RBF	20	1.0950	1.280	0.345	0.875
PL25RBF	25	1.3763	1.593	0.416	1.000
PL30RBF	30	1.6264	1.906	0.432	1.250
PL35RBF	35	1.8764	2.155	0.493	1.312
PL50RBF	50	2.6269	2.988	0.621	1.750



www.kurtworkholding.com  
Phone: 763.574.8309  
Toll Free: 877.226.7823  
Fax: 763.574.8313



# KURT® PINLOCK™

## Mounting System Installation Instructions

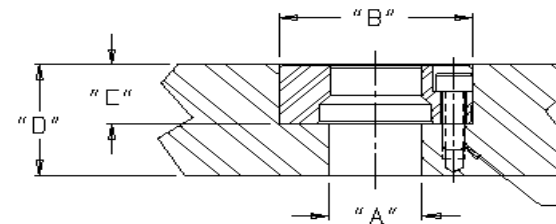
### FACE MOUNT RECIEVER BUSHINGS

- Drill hole ("A" Diameter)
- Counterbore, approximately 0.030" under bore diameter, maintaining "C" depth
- Finish bore hole to "B" & "C" dimensions
- Drill and tap for mounting screws
- Install receiver bushing; tap lightly into hole
- Install mounting screws

NOTE: Installed bushings should be approximately 0.012" below the subplate surface

Part#	Actual O.D. +0.0000 -0.0004	Shank Dia. (mm)	Clear Drill Dia A	Bore +0.0005 -0.0000 B	Depth +0.002 -0.000 C	Min Sub Plate Thickness D	Tap Size & Depth E	Bolt Circle Dia*	Mounting Screw Torque (in. lbs)
PL20RBF	1.6873	20	.812	1.6873	0.637	1.125	10-32X1/2	1.362	55
PL25RBF	2.0623	25	1.000	2.0623	0.799	1.250	1/4-28X1/2	1.644	200
PL30RBF	2.2654	30	1.187	2.2654	0.871	1.375	1/4-28X3/4	1.876	200
PL35RBF	2.6873	35	1.562	2.6873	0.904	1.500	5/16-24X7/8	2.178	400
PL50RBF	3.4998	50	2.156	3.4998	1.239	2.000	3/824X1	2.916	700

\* = 3 places equally spaced



"E" - TAP 3 HOLES EQUALLY SPACED ON BOLT CIRCLE DIA.

Kurt Manufacturing  
9445 East River Road NW  
Minneapolis, MN 55433

