



WISE FEATURES

- » Quick-change, snap-on/off jaws
- » Anglock design minimizes jaw lift
- » High clamping force
- » Spring-loaded gibs for squareness
- » Easy center-line adjustment
- » Quick lash adjustment
- » 96mm pull-stud pattern spacing for zero-point pallet systems
- » End effector ready for automation integration
- » 3 jaw options: Machinable, Dovetail and Serrated
- » Max torque 45 foot pounds

Kurt Workholding is unveiling three new 5-axis vises with quick-change jaws and a lineup of 96mm zero-point mounting pallets and accessories.

Introducing the New Kurt PFW 5-Axis 96mm Vises. Featuring three vise-body sizes and three jaw options, our new wide-body design allows mounting using a 96mm pull-stud pattern on Kurt zero-point quick-release pallets. Choose any of three jaw options including, serrated, machinable or dovetailed styles in 4-inch widths. Kurt 5-Axis vises allow maximum part access for done-in-1 machining operations on 3-, 4- or 5-axis machines.

User-friendly features include, quick-change jaws, spring-loaded gibs, quick-lash adjustment, hexes on both ends of the vise and side-body pull stud locations for robotic machine tending and pick and place. Kurt PFW vises range from 2.625- to 6.625-inch openings, making them the perfect vise for milling small- to medium-sized parts. The proven AngLock® design naturally pushes the vise jaws down and forward allowing much greater surface contact on parts—maximizing holding strength and minimizing part deformation.



Dovetail

Machinable

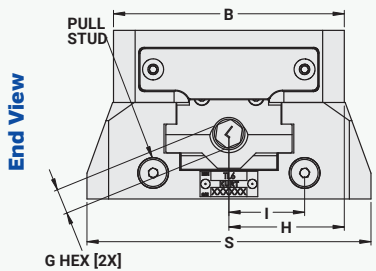
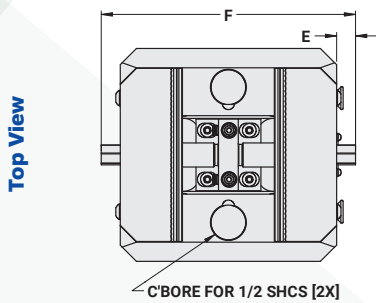
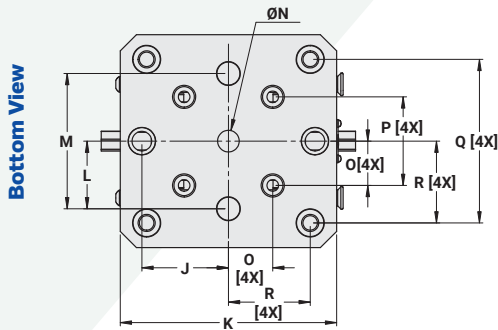
Serrated

JAW FEATURES

- » Quick-change jaws snap on/off with no tools needed
- » Machinable, Dovetail and Serrated jaw options
- » Jaws and nuts can be reversed for ID clamping
- » Nuts are gibbed to help with squareness

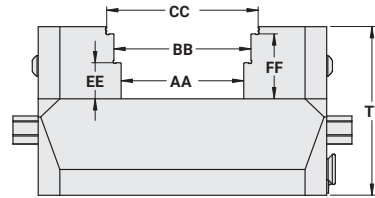
Kurt PFW 5-Axis Visers

TECHNICAL SPECIFICATIONS



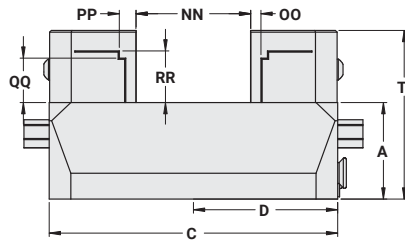
Torque (ft-lbs)	Clamp Force (lbs)
10	720
20	1,520
30	2,250
40	3,050
45	3,375

**Side View
(Serrated jaws)**



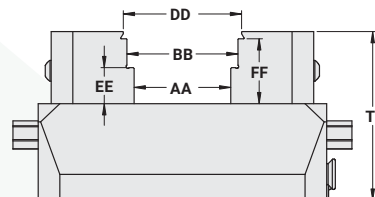
**Serrated models:
PF420S, PF440S, PF460S**

**Side View
(Carvable jaws)**



**Carvable models:
PF420C, PF440C, PF460C**

**Side View
(Dovetail jaws)**



**Dovetail models:
PF420D, PF440D, PF460D**

	PFW420	PFW440	PFW460
A	1.672	1.672	1.672
B	4.000	4.000	4.000
C	5.000	7.000	9.000
D	2.500	3.500	4.500
E	0.438	0.438	0.438
F	5.875	7.875	9.875
G	7/16	7/16	7/16
H	2.000	2.000	2.000
I	1.313	1.313	1.313
J	2.000	2.000	2.000
K	4.000	4.000	4.000
L	1.563	1.563	1.563
M	3.125	3.125	3.125
N	0.500	0.500	0.500
O	1.024	1.024	1.024
P	52MM	52MM	52MM
Q	96MM	96MM	96MM
R	48MM	48MM	48MM
S	4.921	4.921	4.921
AA	2.125	4.125	6.125
BB	2.375	4.375	6.375
CC	2.625	4.625	6.625
DD	2.501	4.501	6.501
EE	0.625	0.625	0.625
FF	1.125	1.125	1.125
NN	2.000	4.000	6.000
OO	0.190	0.190	0.190
PP	0.303	0.303	0.303
QQ	0.770	0.770	0.770
RR	0.885	0.885	0.885
TT	2.922	2.922	2.922

Kurt 5-Axis Workholding Zero Point Pallets

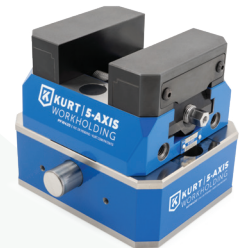
Kurt's new 96 mm zero-point pallet system including: manual, pneumatic and quick-release button operated options is designed for use with the PFW Vise Series.



Hex Lock Pallet



Pneumatic Pallet



Button Release Pallet

kurtworkholding.com



Kurt Manufacturing // A Full-Service Multi-Divisional Manufacturer since 1946

9445 East River Road NW | Minneapolis, MN 55433 | workholding@kurt.com | 877.226.7823